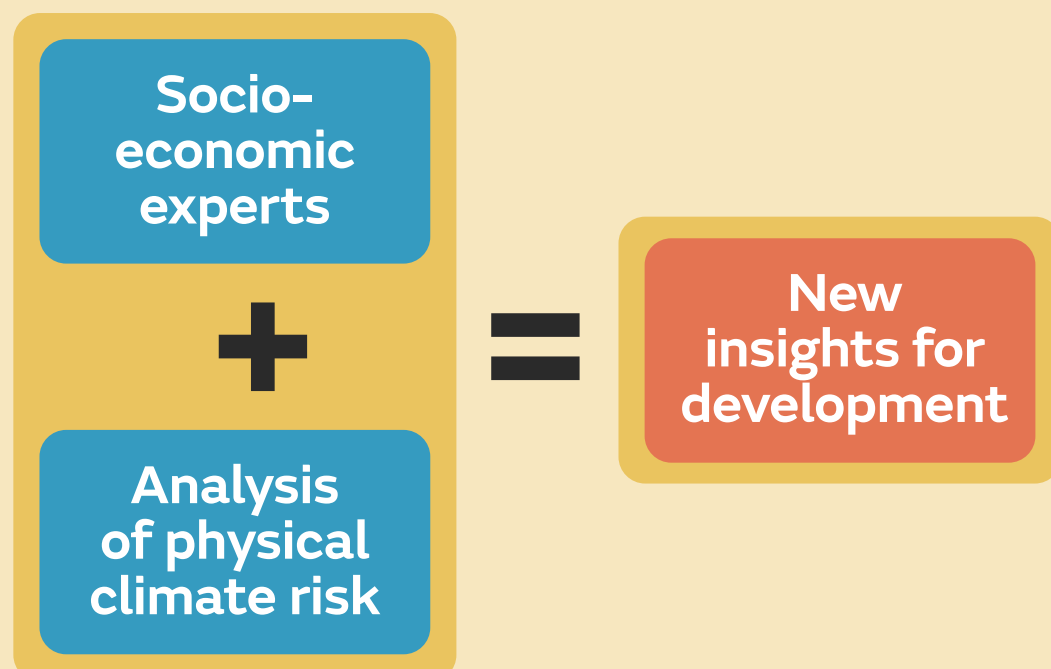


# Climate in Context: Methodology

An interdisciplinary approach for the analysis and communication of regional climate-related risks within complex socio-economic systems to inform adaptation and climate resilient development.

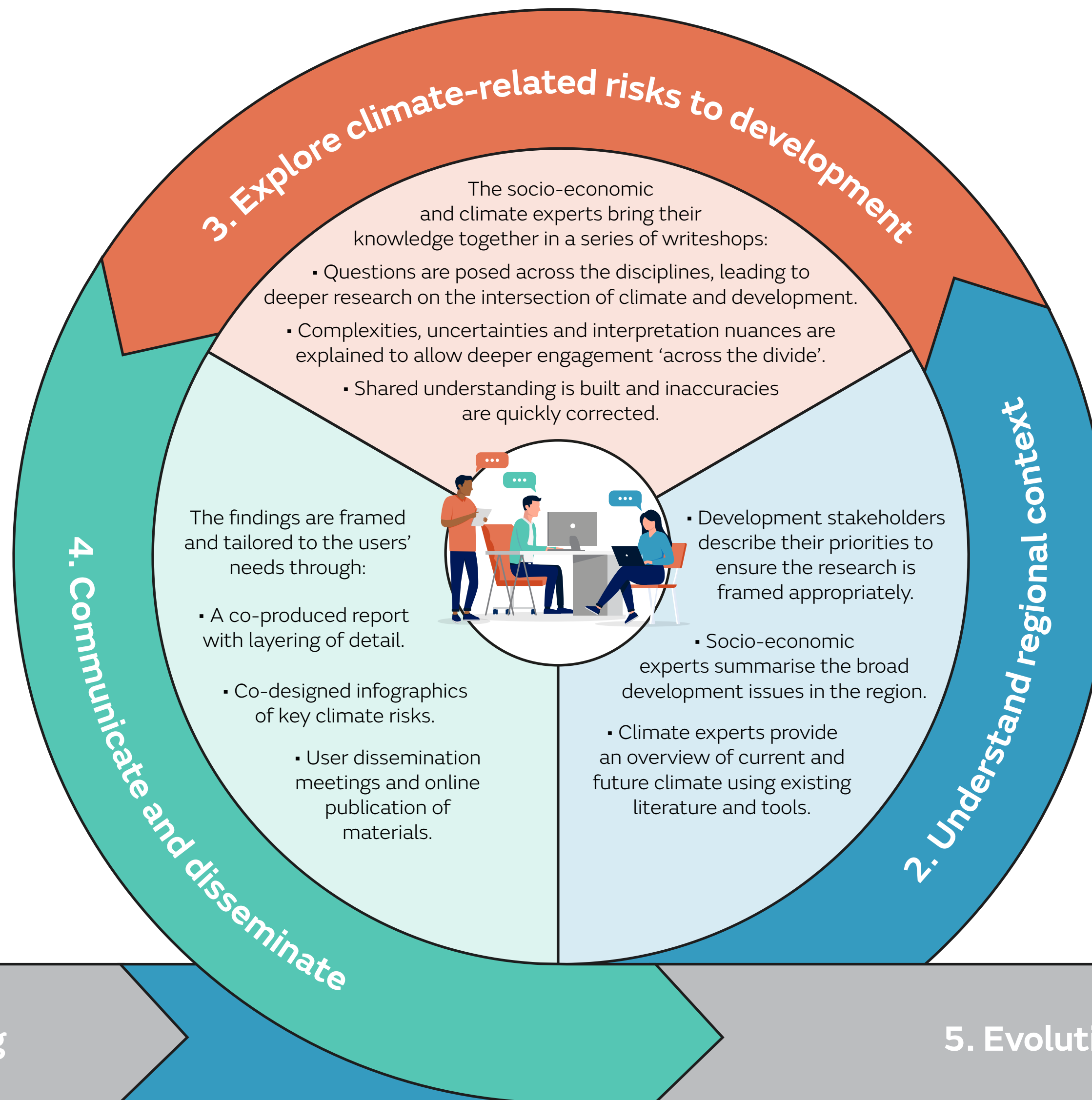
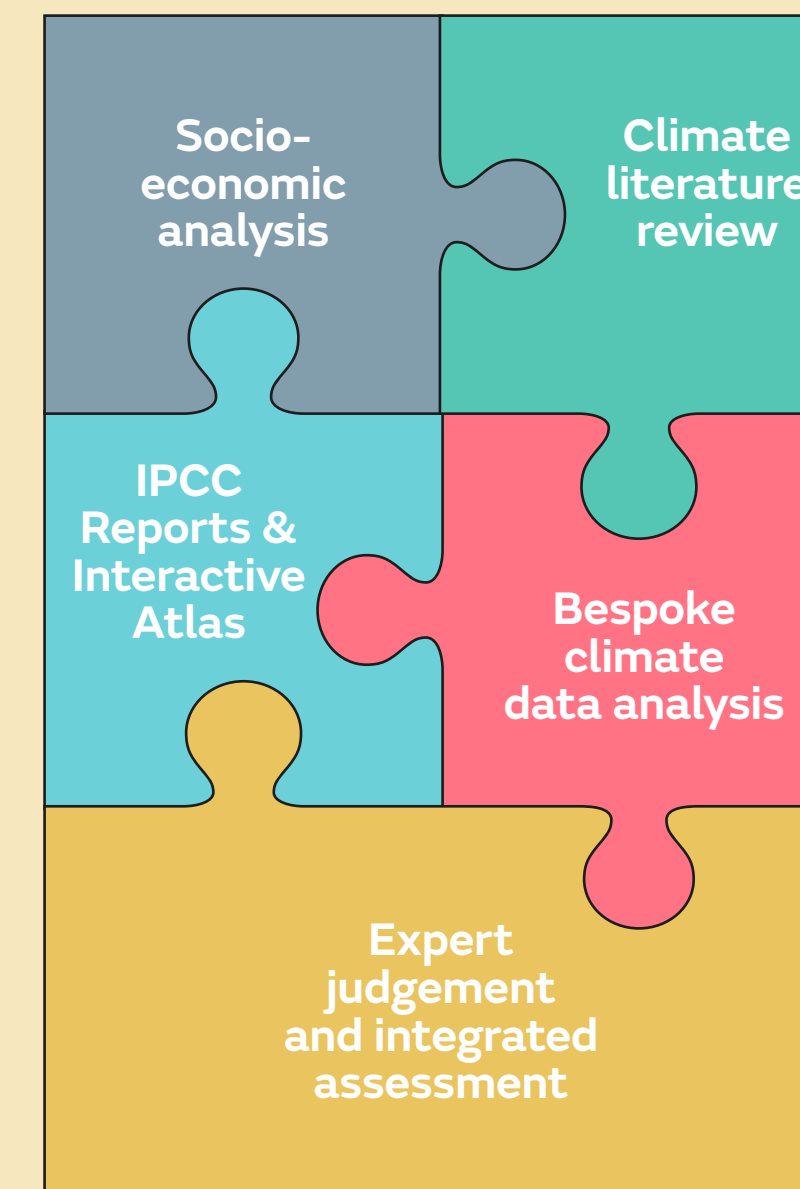
## Writeshops

Writing workshops bring together the socio-economic and climate experts to collectively explore, define, and review the key messages relating to regional climate risk. The scientists work together in an open, trusting environment that allows for probing questions to be asked across disciplines to bring together their collective knowledge and generate new insights on the intersection of climate-related risk with development priorities.



## Analysis components

An interdisciplinary and collaborative approach is taken to bring together multiple sources of information in writeshops.



- Agree scope
- Identify user needs

- User feedback
- Lessons learnt

