

## Storm Evert, 29 to 30 July 2021

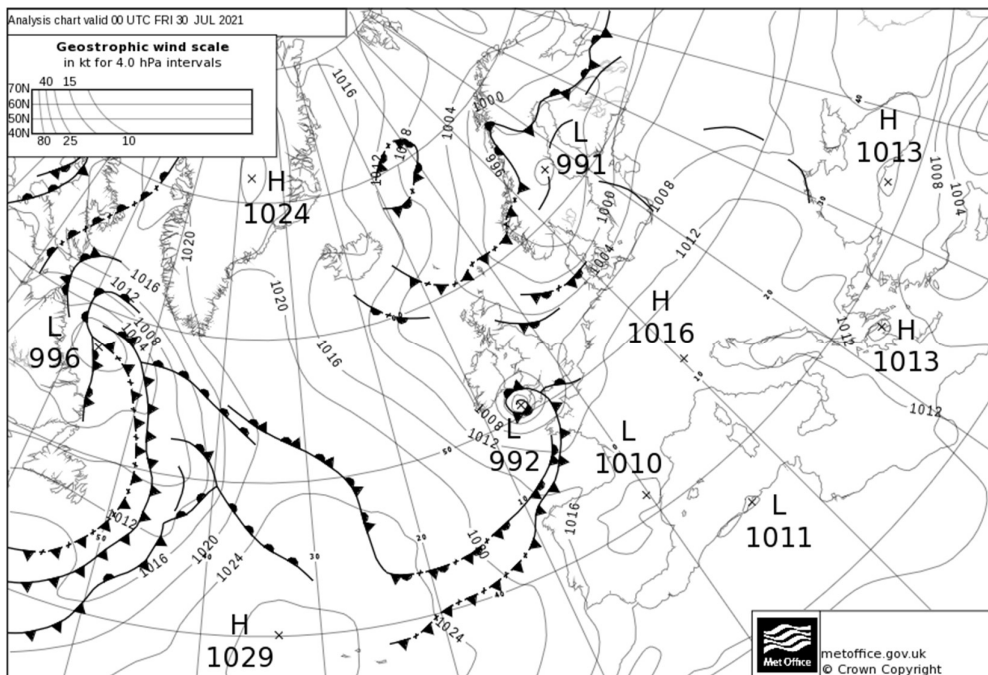
Southern and south-west England experienced some unusually strong winds for the time of year from storm Evert. Winds gusted widely at over 40Kt (46mph).

### Impacts

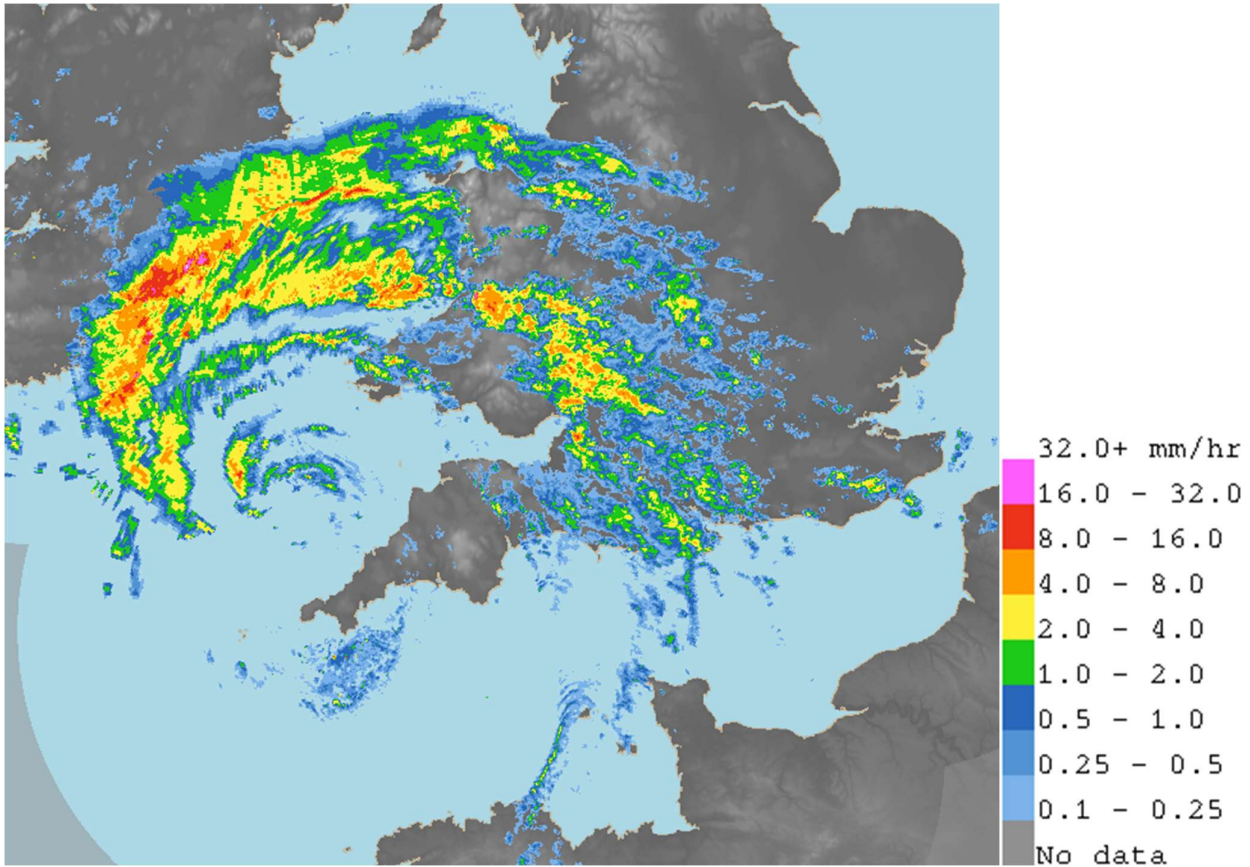
The storm brought travel disruption across south-west England with difficult conditions on the roads. Holidaymakers experienced an uncomfortable night in busy campsites during the school summer holiday season with the strong winds flattening some tents. Large waves caused dangerous conditions on beaches.

### Weather data

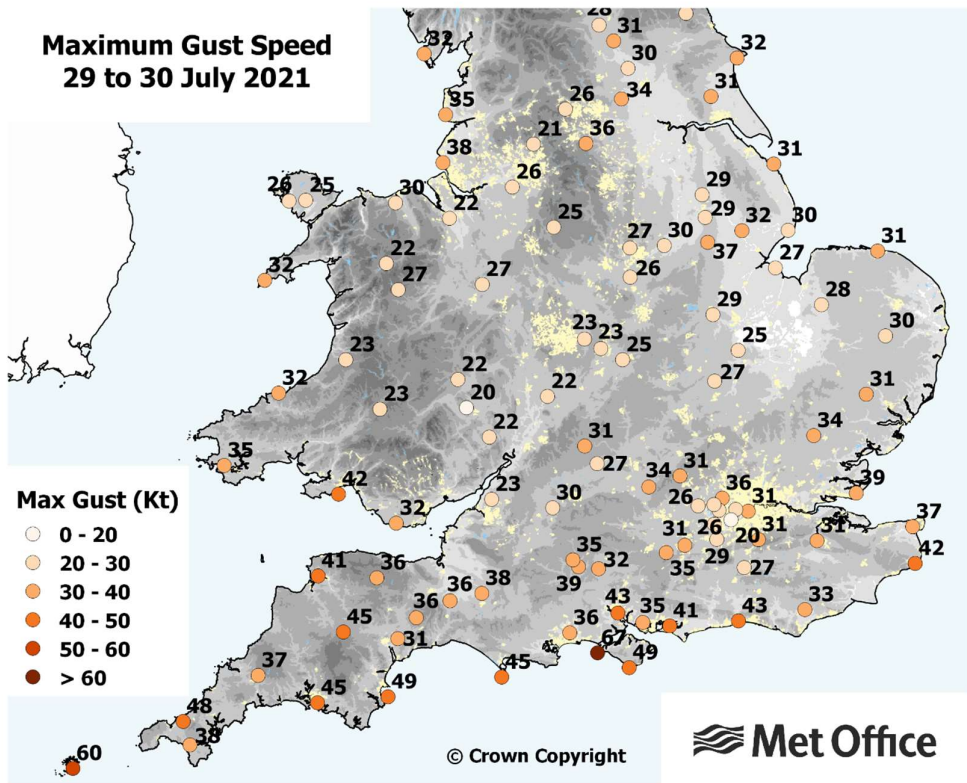
The analysis chart at 0000UTC 30 July 2021 shows storm Evert centred off the north Cornwall coast.



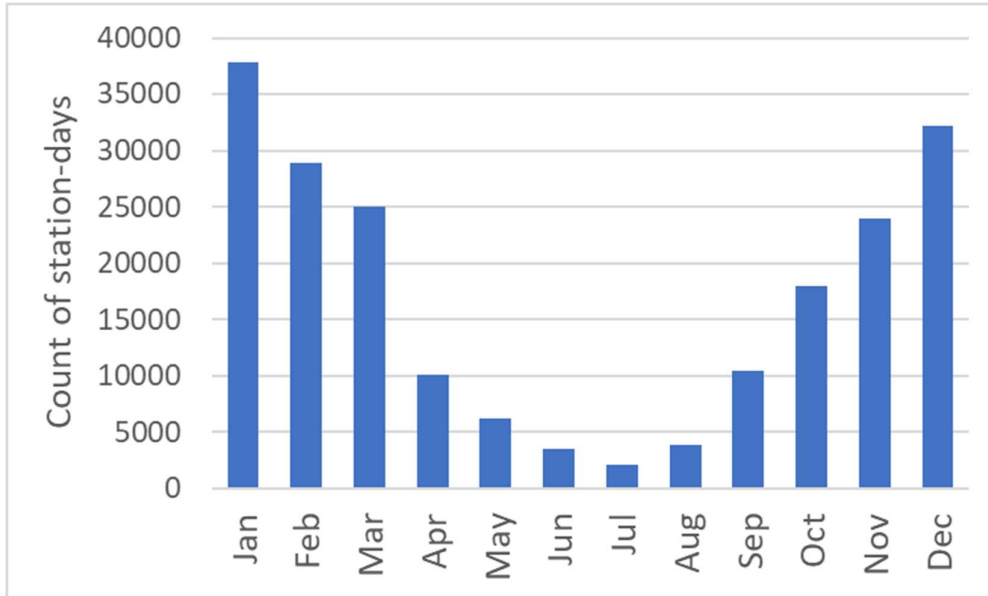
The rain-radar image below at 0000 UTC 31 July 2021 shows bands of heavy rain associated with storm Evert stretching from Wales to south-east Ireland, with the centre of the low to the north-west of Cornwall.



The map below shows maximum gust speeds from 29 to 30 July 2021 from storm Evert. Winds gusted at 40 to 50Kt (46 to 58mph) across south-west England and the south coast. The highest gusts were 67Kt (77mph) at Needles Old Battery, Isle of Wight, 60Kt (69mph) at St Mary's, Isles of Scilly and 49Kt (56Kt) at St Catherine's Point, Isle of Wight and Berry Head, Devon.



Storm Evert was the UK's first named to fall in July since the storm naming scheme was introduced in autumn 2015. The storm was notable but not exceptional for the time of year. However, July is climatologically the least stormy month of the year. The chart counts, by month, the number of station-days where wind gusts exceeding 40Kt have been recorded in the UK, based on data from 1970 to 2021. In the summer months, the jet stream - which typically brings low pressure systems to the UK with associated wind and rain - is generally much weaker and further to the north of the UK in comparison with the winter months.



Author: Mike Kendon, Met Office National Climate Information Centre

Last updated 04/08/2021

