

DARAJA

DEVELOPING RISK AWARENESS
THROUGH JOINT ACTION

4TH JULY 2018

NAIROBI, KENYA



Our Objectives for the Day

- ▶ Explore together a major challenge
- ▶ Understand the dividends of addressing it
- ▶ Align on stakeholders to engage
- ▶ Expose ourselves to relevant initiatives and tools
- ▶ Discuss collaboration moving forward

Style & Tone

Informal

Interactive

Inclusive

Purposeful

RESURGENCE URBAN RESILIENCE TRUST

DESIGN. DATA. COMMUNICATION.

Resurgence Urban Resilience Trust

Design. Data. Communication.
For City Climate Resilience.

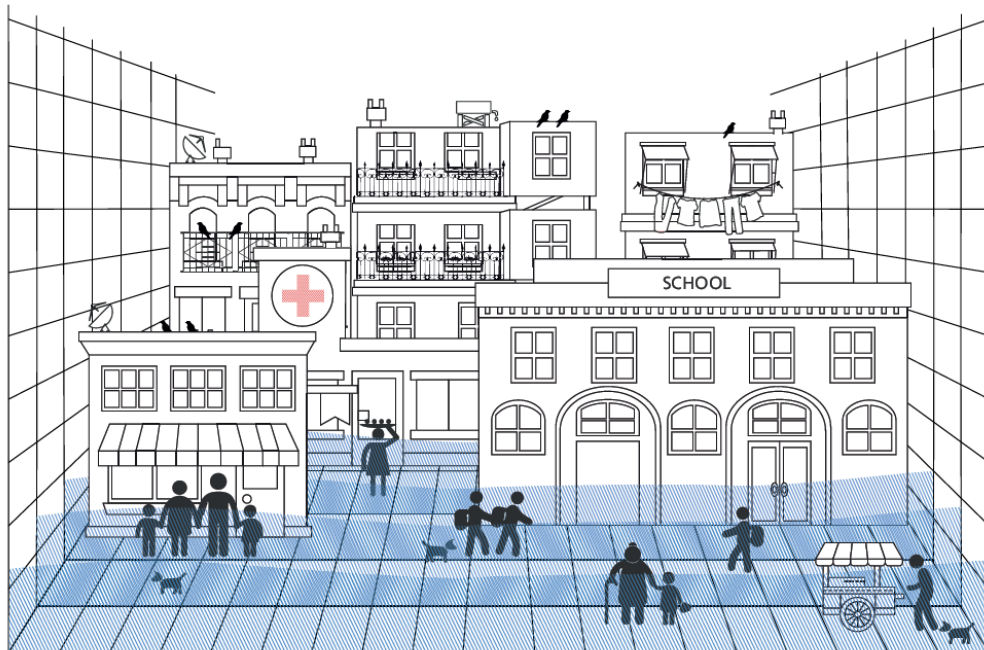
Our Work on Open Data for Resilience



**OPEN DATA
INFRASTRUCTURE
FOR CITY
RESILIENCE
A ROADMAP
SHOWCASE
AND GUIDE**

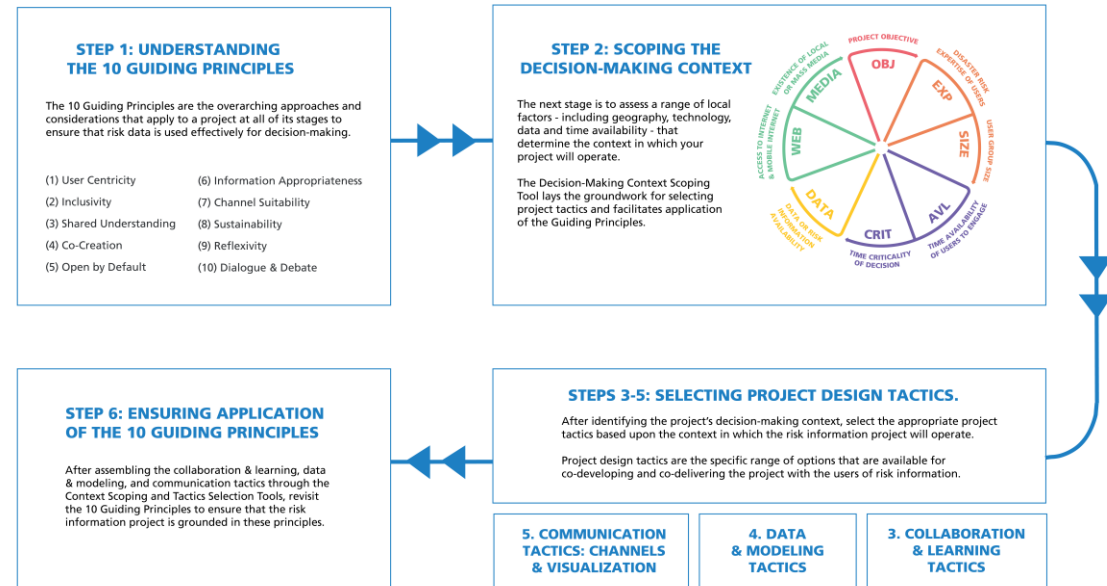
Our Work on Risk Communication

Design for Impact Framework



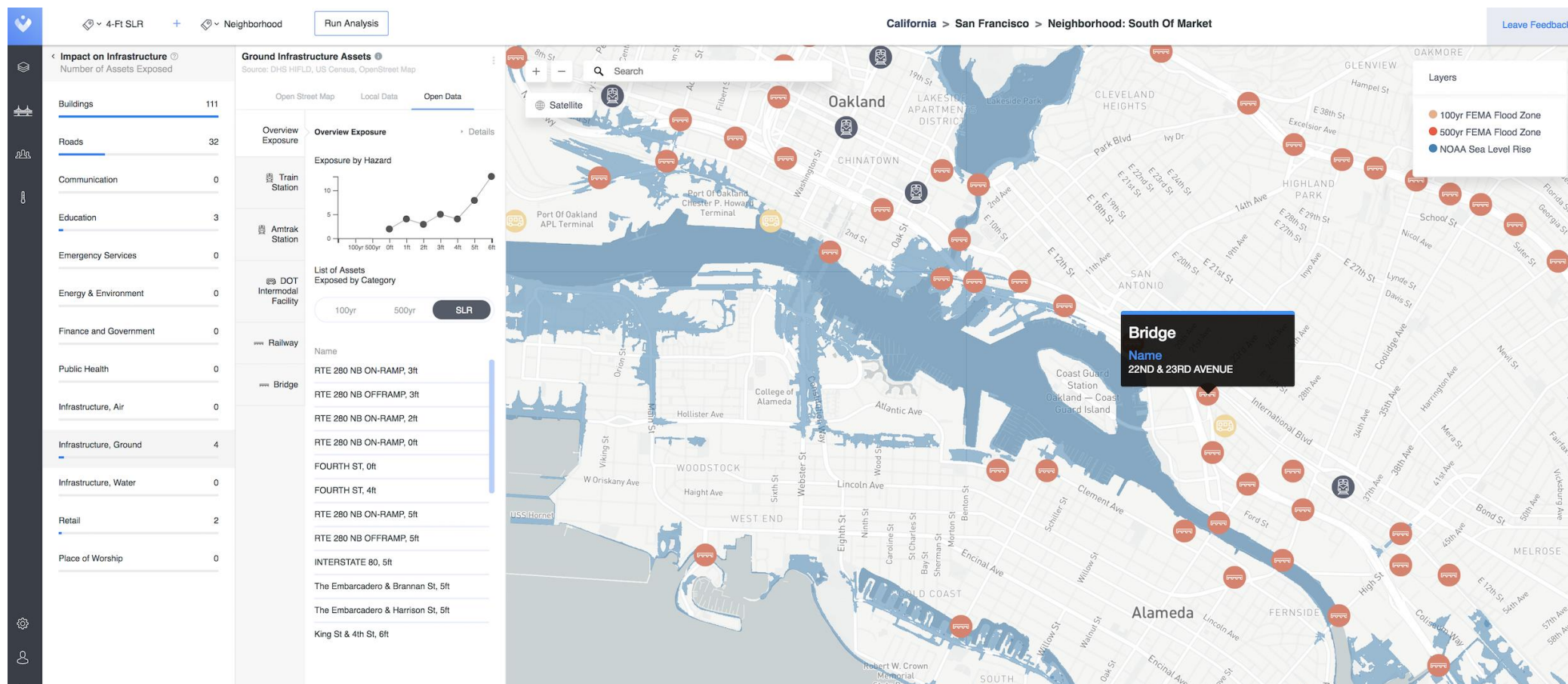
THE DESIGN FOR IMPACT FRAMEWORK

Integrating Open Data and Risk Communication for Decision Making



Our Work on Risk Communication

Vizonomy Climate Risk Terminal



CENTRE FOR COMMUNITY INITIATIVES (CCI)

APPROACHES FOR ENHANCING COMMUNITY RESILIENCE

Background

- ▶ Vision of **supporting organisation of the local communities** to address poverty
- ▶ Currently working in Dar-es-Salaam, Morogoro, Dodoma, Mwanza, Arusha, Tanga, Zanzibar and Musoma **urban centres**
- ▶ Have **763 savings groups** with **savings of more than US \$252,535** which are being used as loans for their livelihood
- ▶ CCI works in **partnerships with LGA at different levels** from Mtaa (settlements), Ward, Municipality and central Government, Academic Institutions and a number of private sector organisations
- ▶ CCI supports community with **appropriate and affordable solutions** on water, sanitation, affordable housing, and has been integrating aspects of climate change and resilience

Approaches

- ▶ Community organisation through savings and not only keeping of money
- ▶ Collection of information through settlement profiles and enumerations
- ▶ Transfer of knowledge and capacity building through exchanges visits
- ▶ Develop advocacy committees within each settlements to address issues generated from enumeration and socio-economic surveys
- ▶ Implementation of Precedence Projects which are initiated and managed by community with support from communities and local governments.

Characteristics and challenges of informal settlements in Dar

- ▶ High population
- ▶ Single storey structure following traditional Swahili design of houses
- ▶ Infrastructure services such as water, sanitation, drainage and solid waste management is generally in low quality or is missing
- ▶ Majority of community depends on alternative services from their neighbors, Community based organization and private sector

Challenges of flooding in Dar



Examples of solutions implemented by CCI

13

AFFORDABLE HOUSING SOLUTIONS



AFFORDABLE HOUSING SOLUTIONS



Examples of solutions implemented by CCI

14

SANITATION SOLUTIONS



SANITATION SOLUTIONS



Examples of solutions implemented by CCI

15

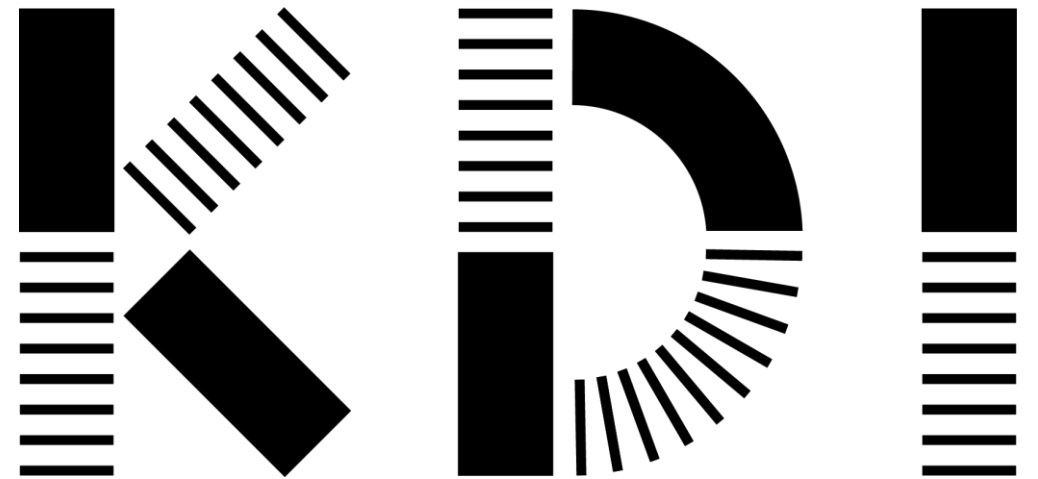
SOLID WASTE SOLUTIONS



WATER SUPPLY SOLUTIONS



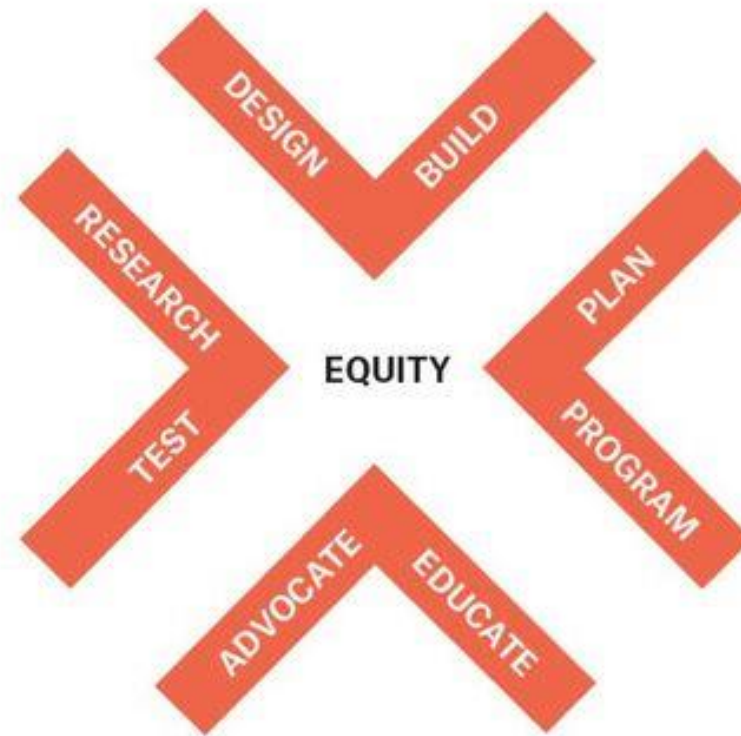
Koukuey Design Initiative



KDI is a non-profit
design and **community**
development organization.

We partner with **under-**
resourced communities to
advance equity and activate
the **unrealized potential** in
neighborhoods and cities.

We advance our mission
through **advocacy, research,**
planning, and built works.







SITE 1 AFTER

SITE 1 AFTER



KIBERA PRODUCTIVE PUBLIC SPACES

KPSP09 2016

KPSP02 2011

KPSP04 2013

KPSP03 2012

KPSP05 2014

KIBERA SETTLEMENT

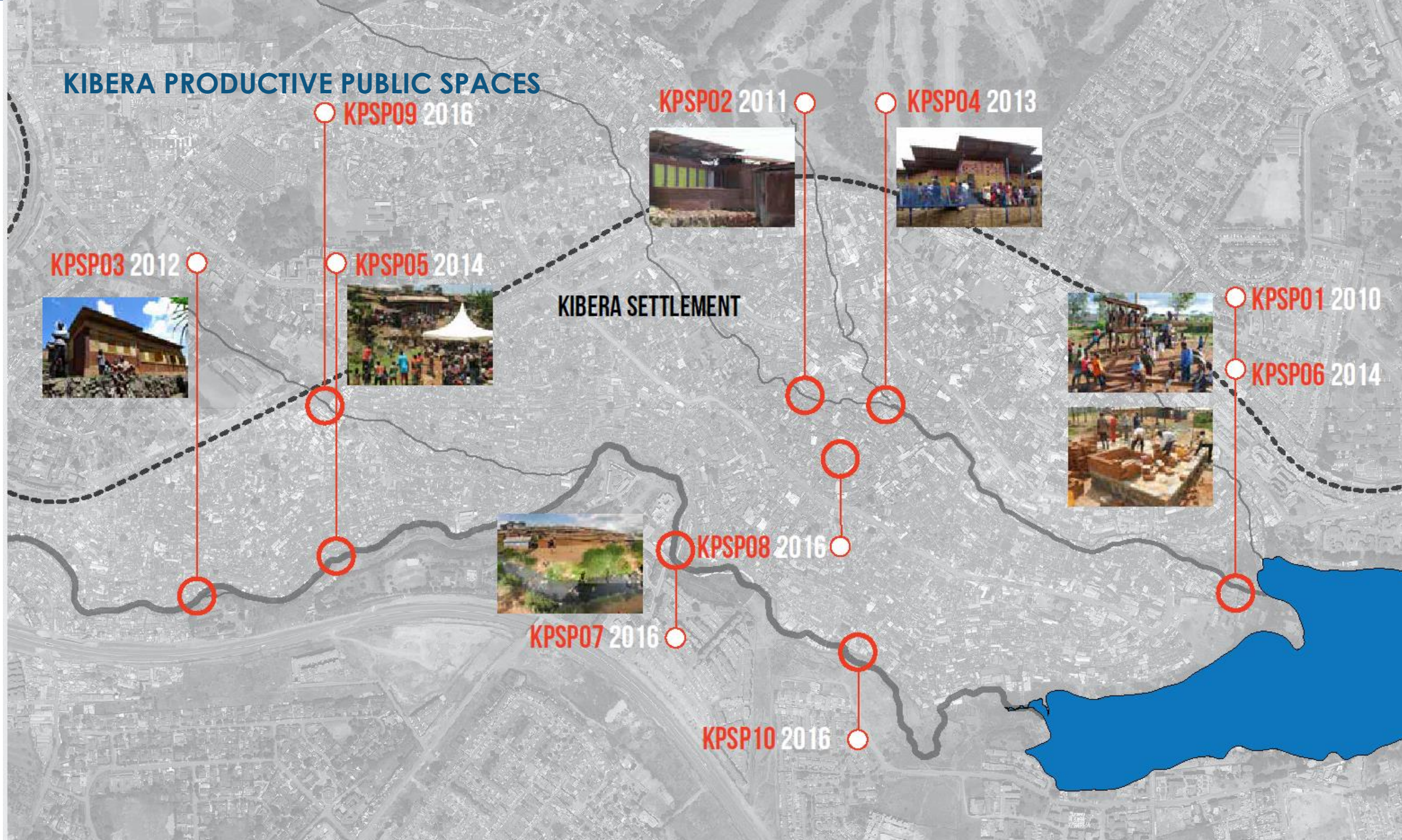
KPSP01 2010

KPSP06 2014

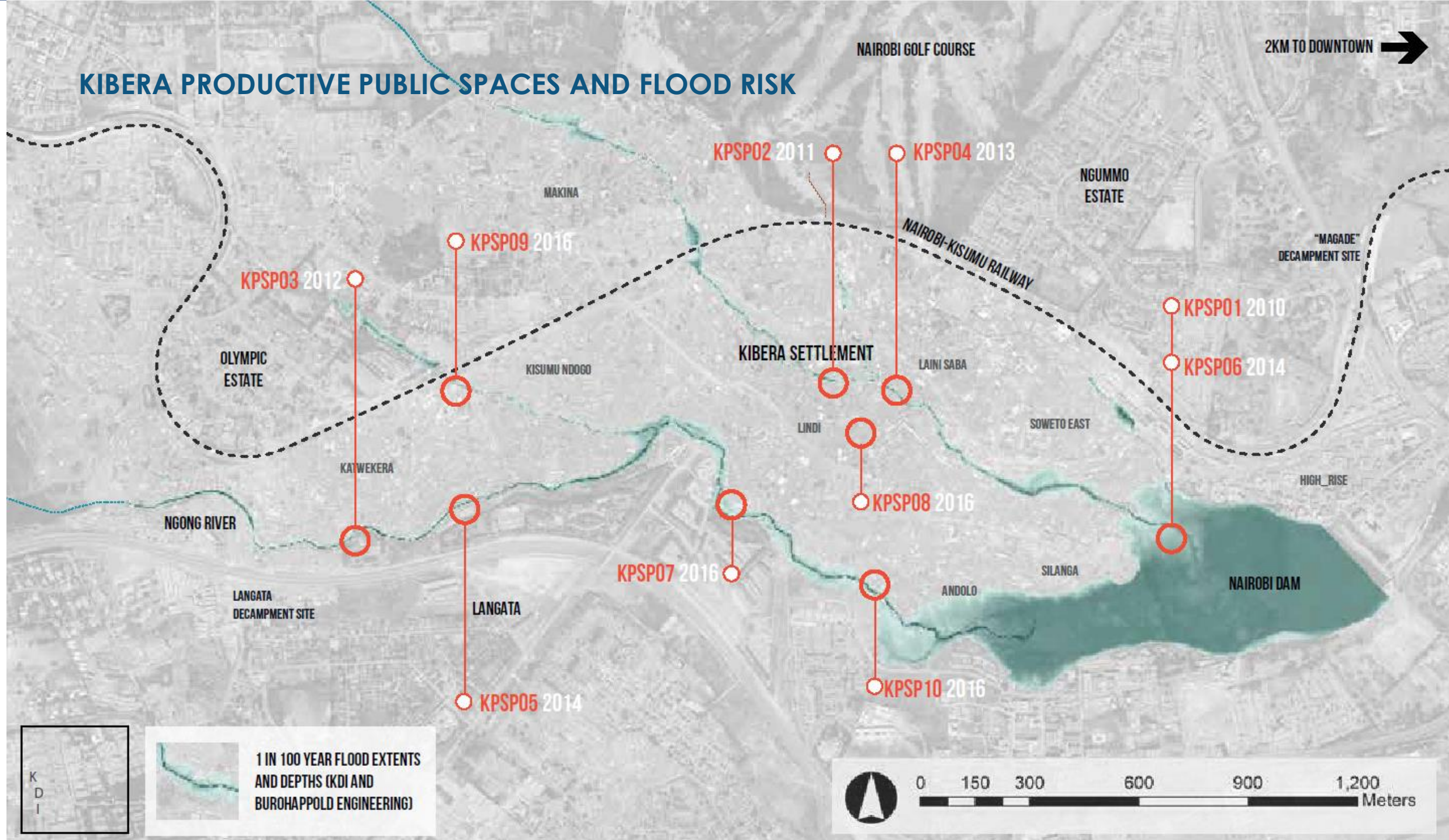
KPSP08 2016

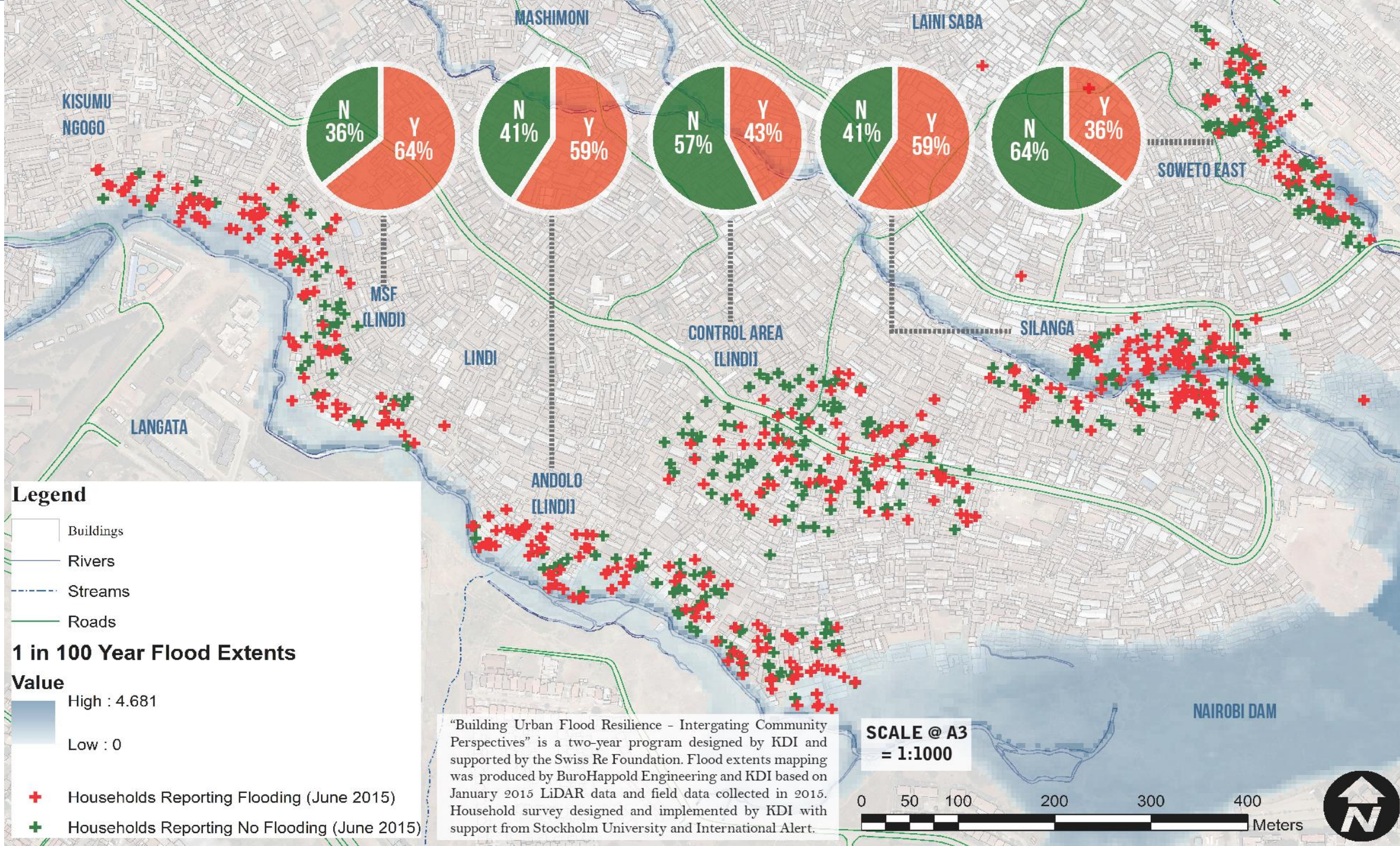
KPSP07 2016

KPSP10 2016



KIBERA PRODUCTIVE PUBLIC SPACES AND FLOOD RISK





COMMUNITY ENGAGEMENT



CITY ENGAGEMENT





DARAJA

DEVELOPING RISK AWARENESS THROUGH JOINT ACTION

DARAJA | Our Opening Proposition

- ▶ Residents of informal settlements are in the cross hairs of climate change/extreme weather impacts
- ▶ Climate Risk Information remains inaccessible, inappropriate, unactioned
- ▶ Met Services – in common with others – are struggling to reach most vulnerable/those with formal responsibility for them

DARAJA | Concept and Our Goals

Brokerage and co-design of Weather and Climate Services with Urban Stakeholders

► *With Intention of:*

- Improving access to and enhance use of relevant weather and climate information
- Enabling residents to be more resilient, better prepared, enabled to take adaptive measures
- Enabling city authorities to make better climate/extreme weather informed decisions in relation to informal settlements

DARAJA | Core Approaches

- 1) **User Centricity** – user-centric, context-based, targeted design
- 2) **Inclusivity** – design that meets the decision-making needs of people across social groups
- 3) **Shared Understanding** – between various users of risk information
- 4) **Co-Creation** – with the users of risk information
- 5) **Open by Default** – policy for data sharing, coding and innovation processes
- 6) **Information Appropriateness** – cultural, cognitive and psychological appropriateness of risk information
- 7) **Channel Suitability** – selection of communication channels on the basis of trust, interactivity, scalability and resilience
- 8) **Sustainability** – of risk information initiatives requires a viable business model and support to local capacities and networks
- 9) **Reflexivity** – critical self-reflection and ongoing review
- 10) **Dialogue & Debate** – degree to which it generates dialogue and debate between users of risk information

DARAJA | Key Activities

- 1) Initial scoping and analysis
- 2) Understanding and mapping the **information ecosystems** at city-wide and settlement level
- 3) Deployment of 4 prototype projects (1 at settlement level ; 1 city-wide per city)
- 4) Sharing emerging learning and assessing potential for **scale-up**

DARAJA | Possible Pilot Types

Community / Resident Decision-Making

River Flood Early
Warning (EW) Systems

Flash Flood EW Systems

Peer-to -Peer Preparedness/
Adaptation Campaigns

City Authority Decision-Making

Dynamic Flood Hazard Maps

Utility and Infrastructure Chain
Failure

Mapping / Management
Platforms



Initiatives that support both sets of groups

DARAJA | Constraints and Opportunities

Constraints

- ▶ Modest budget
- ▶ Timeline versus process
- ▶ Small organisations
- ▶ Stakeholders working at full capacity

Opportunities

- ▶ Strong international networks
- ▶ Support from WISER team
- ▶ Advice/ leverage/ brain trust of participants today

