



Met Office

Browser support standards

August 2011

Internet Applications team

Contents

Scope of this document	2
Web browser support	2
'Levels of Support' definitions.....	2
Support Level 1 - supported web browser - Support definition:.....	2
Support Level 2 - partially-supported web browser - Support definition:	2
Support Level 3 - unsupported web browser - Support definition:.....	3
Support table	3
Decision tree.....	4

Scope of this document

This policy applies to web browsers that are being used on desktop versions of Windows, Mac OS and Linux/Unix.

We have developed separate sites at www.metoffice.gov.uk/mobile and www.metoffice.gov.uk/public/pws/smarterweather/ for use by mobiles; a separate policy is being developed these sites.

Web browser support

The Met Office public web site has been developed to comply with the World Wide Web Consortium (W3C) AA Accessibility standards.

We have tested our site against the browsers given in the support table given below.

The various browsers are allocated a 'Level of Support' as described below. The decision tree used to decide the level of support is given on page 4.

'Levels of Support' definitions

Support Level 1 - supported web browser - Support definition:

- All content **MUST** be readable and useable and all functionality **MUST** work;
- Variations to presentation of content **MUST** be minimised;
- Where CSS layout is used, the CSS **MUST** be rendered by supported web browsers, so that a fully-styled version of the page is presented to the user;
- Pages **SHOULD** be developed to maximise the user experience for users of the web browser with the highest proportion of users **UNLESS** this would greatly compromise the 'Objectives of Web Browser Support'.

Support Level 2 - partially-supported web browser - Support definition:

- All core content **MUST** be readable and usable and navigation **MUST** work;
- Any degradation to (client-side) application functionality **MUST** be graceful degradation;
- Any degradation to presentation **MUST NOT** obscure content;

- Where CSS layout is used, an unstyled version of the page may be provided to a partially-supported browser.

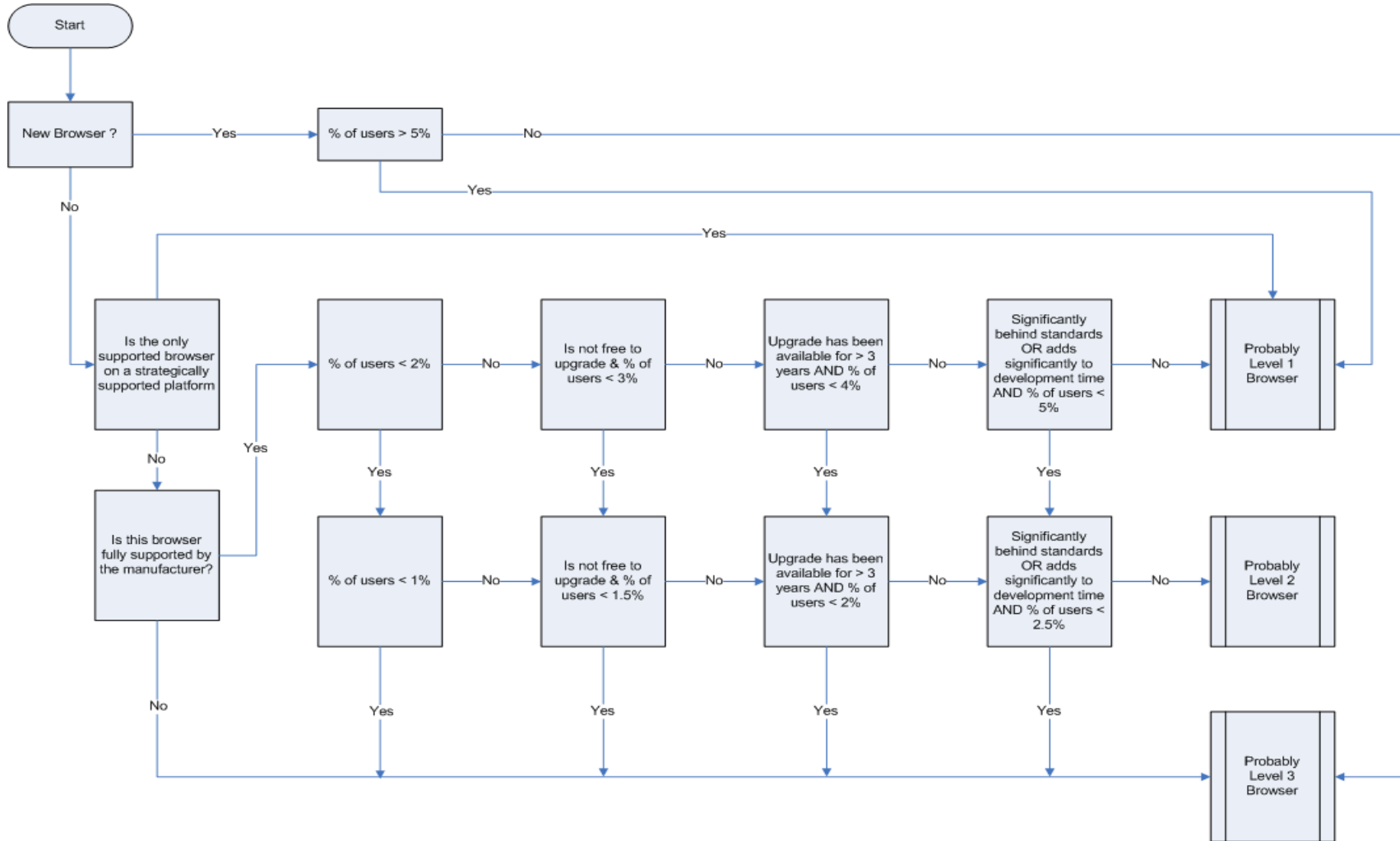
Support Level 3 - unsupported web browser - Support definition:

- No support or testing necessary.
- All web browsers not specifically listed in the support table are unsupported.

Support table

Browser	IE	Firefox	Safari	Chrome	Opera
Platform	Windows	Windows & Linux	Mac	Windows & Linux	Windows & Linux
Level 1	7,8,9	3.6.x,5.0	5.x	13.x	
Level 2			4.x		
Level 3	1,2,3,4,5,6	3.0.x, 3.5.x			9.x
Must Test	7,8,9	3.6.x, 5.0	5.x.x		

Decision tree



Met Office
FitzRoy Road, Exeter
Devon EX1 3PB
United Kingdom

Tel: 0870 900 0100
Fax: 0870 900 5050
enquiries@metoffice.gov.uk
www.metoffice.gov.uk