

# Matching observations equipment game

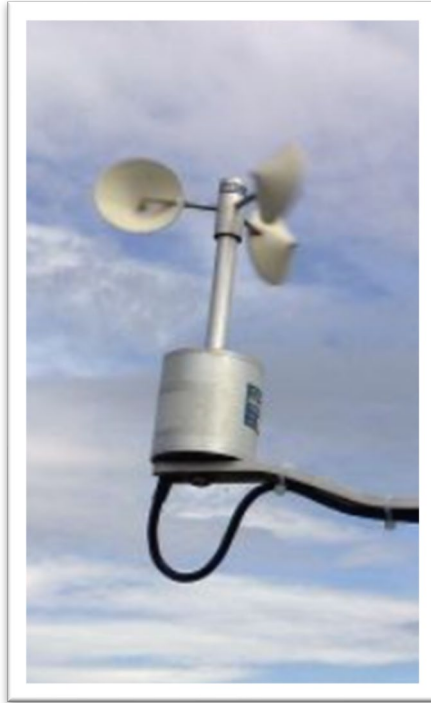
## Session 3



**VIRTUAL**

# Science Camp 2021

# What instrument is this?



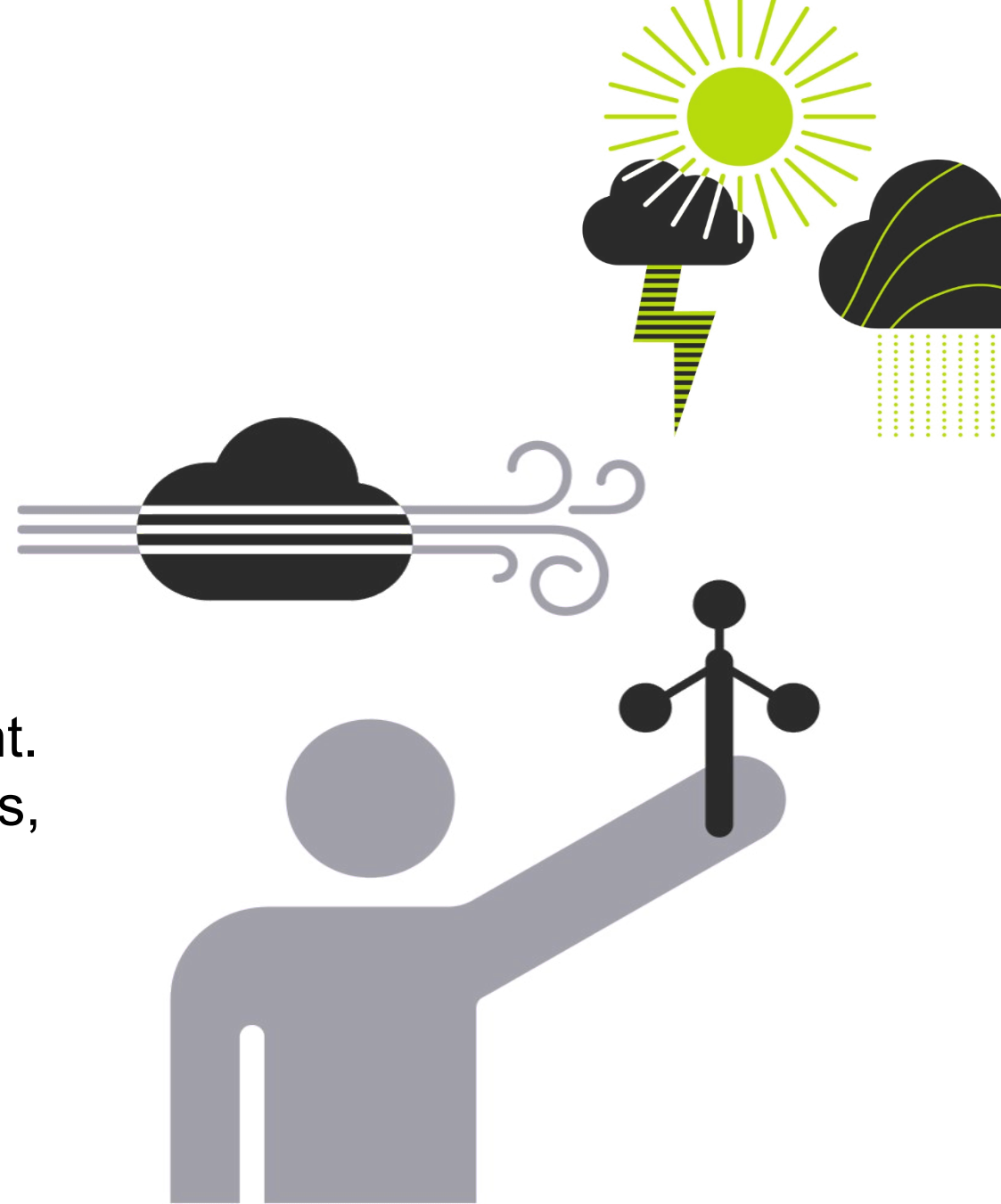
What do you think it's used for?

**Answer:**

# **Anemometer**

---

This is a device used for measuring wind speed and is also a common weather station instrument. The term is derived from the Greek word anemos, which means wind, and is used to describe any wind speed instrument used in meteorology.



# What instrument is this?



What do you think it's used for?



# Answer:

## Barometer

A **Barometer** is a scientific instrument used to measure air pressure. Pressure tendency can forecast short term changes in the weather. Many measurements of air pressure are used within surface weather analysis to help find surface troughs, high pressure systems and frontal boundaries.



# What instrument is this?



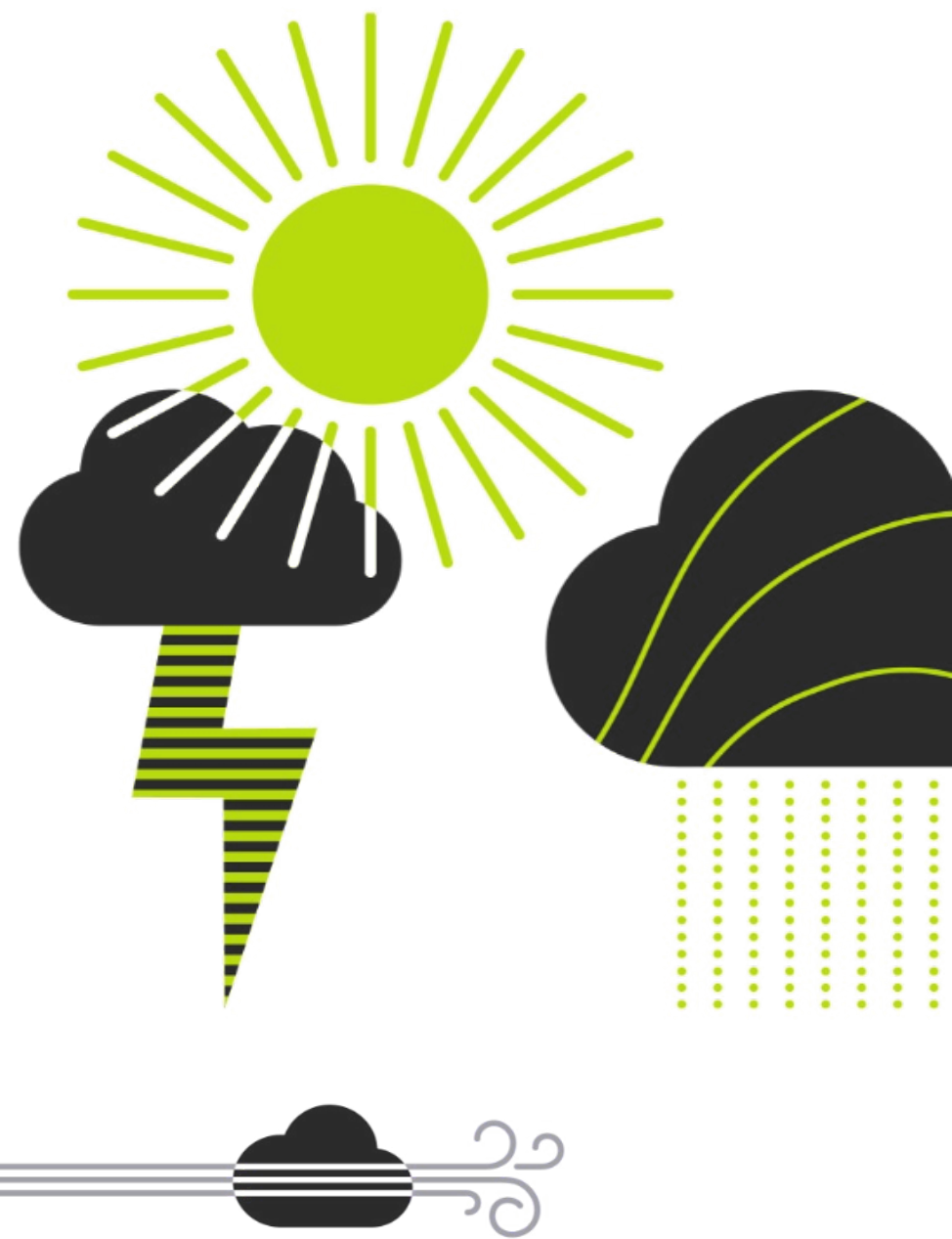
What do you think it's used for?

**Answer:**

# Windsock

---

This is flexible cylinder or cone mounted on a mast to show the direction and strength of the wind, especially at an airfield.



# What instrument is this?



What do you think it's used for?



**Answer:**

# **Snow depth sensor**

---

An electrically powered device with built in data processing that measures the distance between the sensor and the ground surface beneath it.



# What instrument is this?



What do you think it's used for?

**Answer:**

# **Tipping bucket rain gauge**

This is used to measure precipitation,  
in a certain amount of time.





# What instrument is this?



What do you think it's used for?



**Answer:**

# Stevenson Screen

---

This is a shelter (from sun, rain, snow and high winds, but also leaves and animals) for wet and dry bulb thermometers used to record humidity and air temperature.



# What instrument is this?



What do you think it's used for?

**Answer:**

# Grass thermometer

---

This measures temperature of the air, fully exposed to the open sky, suspended horizontally over an area covered with short, cropped turf and in contact with the tips of grass blades above 5cm.







Follow **@MetOfficeLearn** on Twitter  
or email **science.camp@metoffice.gov.uk**