



Gwyntoedd Newid: Peryglon Tywydd Storm Ulysses (1903) hyd heddiw





Beth rydym yn ei
olygu wrth dywydd
eithafol?

Pa luniau sy'n cynrychioli digwyddiad tywydd eithafol?



Mawrth 2018 - [Bwystfil o'r Dwyrain](#)
(Eira a Thymheredd Isel)



Rhybudd coch am wres
eithafol

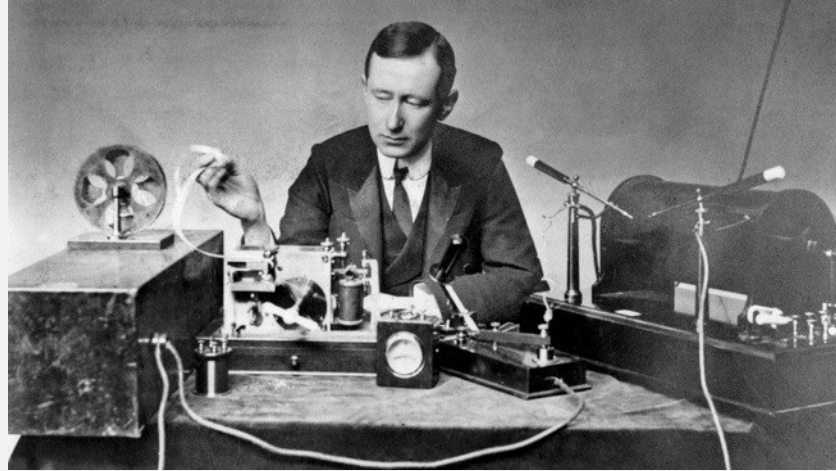


1af-2il Tachwedd 2023 - [Storm Ciaran](#)





Roedd Edward VII ar yr orsedd. Mab hynaf y Frenhines Victoria.



19eg Ionawr - Y darllediad radio trawsatlantig cyntaf rhwng yr Unol Daleithiau a Phrydain.



Chwefror 15fed - Aeth y Tedi Arth cyntaf ar werth.



Rhagfyr 17 - hediad cyntaf y brodyr Wright.

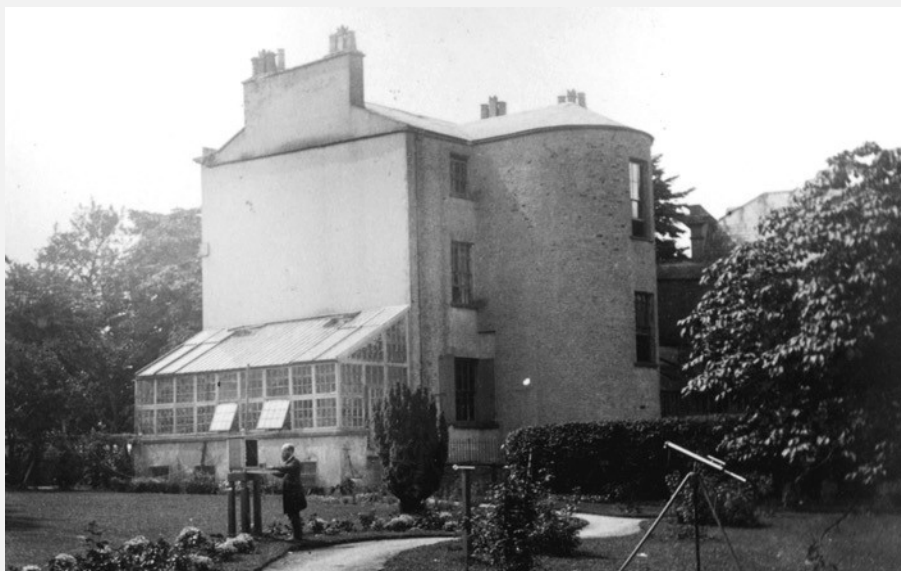




Seathwaite, Ardal y Llynnoedd



Arsyllfa Kew



Cheltenham

DAILY WEATHER REPORT

for 8 a.m. on **SUNDAY 1st FEBRUARY 1903**
Issued by the METEOROLOGICAL OFFICE, 63, Victoria Street, London. W. N. SHAW, Secretary.

STATIONS.	YESTERDAY EVENING (See note on last page.)				THIS MORNING (See back on last page.)										PAST 24 HOURS				
	Barom. (at sea and M.S.L.)	Temp. (at sea)	Wind (at sea)	Weather (at sea)	Barometer		Temperature				Wind				Time		Sun- shine	Rain- fall	
					at 9 P.M. (M.S.L.)	Change since 9 P.M.	at 9 A.M.	at 10 A.M.	at 11 A.M.	at 12 M.	at 1 P.M.	at 2 P.M.	at 3 P.M.	at 4 P.M.	at 5 P.M.	at 6 P.M.			at 7 P.M.
SCANDINAVIA.																			
Haparanda ...	29.33	5	2	0	29.76	-0.4	23	25	23	SE	3	0	0	0	0	0	0	0	0.08
Hornsund ...	29.29	2	2	0	29.73	-0.4	20	20	19	W	2	0	0	0	0	0	0	0	0.00
Stockholm ...	29.27	0	SW	0	29.66	-0.6	20	20	19	SW	4	0	0	0	0	0	0	0	0.00
Wibby ...	29.24	24	W	2	29.80	-0.6	21	21	20	W	4	0	0	0	0	0	0	0	0.00
Karlsund ...	29.22	0	W	0	29.74	-0.6	15	15	14	W	4	0	0	0	0	0	0	0	0.00
Ferdaröarna (Ferdar)	29.20	27	W	0	29.67	-0.7	27	27	27	W	6	0	0	0	0	0	0	0	0.00
Boö ...	29.01	10	E	0	28.90	-0.1	10	10	10	W	0	0	0	0	0	0	0	0	0.00
Christiansund ...	29.03	13	W	0	29.02	-0.0	13	13	13	W	0	0	0	0	0	0	0	0	0.00
Skutumpah ...	29.01	13	SW	0	29.10	-0.1	13	13	13	W	0	0	0	0	0	0	0	0	0.00
BRITISH ISLANDS.																			
Sunlough Head ...	29.20	44	SW	4	29.53	-0.3	43	43	43	W	5	0	0	0	0	0	0	0	0.00
Stornoway ...	29.19	44	SW	4	29.43	-0.2	39	39	39	W	3	0	0	0	0	0	0	0	0.00
Main Head ...	29.05	30	SW	3	29.01	-0.4	30	30	30	W	2	0	0	0	0	0	0	0	0.00
Blackod Pt. ...	29.10	33	W	3	29.55	-0.4	34	34	34	W	2	0	0	0	0	0	0	0	0.00
Valencia ...	29.28	40	SW	7	29.43	-0.1	40	40	40	W	6	0	0	0	0	0	0	0	0.00
Roche's Point ...	29.19	43	SW	5	29.39	-0.2	37	37	36	W	5	0	0	0	0	0	0	0	0.00
Fasinstown ...	29.10	40	SW	5	29.28	-0.2	35	35	35	W	5	0	0	0	0	0	0	0	0.00
Donaghadee ...	29.07	40	SW	5	29.17	-0.1	34	34	34	W	5	0	0	0	0	0	0	0	0.00
Liverpool Obay ...	29.12	40	SW	5	29.16	-0.4	38	38	38	W	4	0	0	0	0	0	0	0	0.00
Holyhead ...	29.21	47	SW	8	29.10	-0.6	38	38	38	W	0	0	0	0	0	0	0	0	0.00
Pembroke (St. Ann's) ...	29.27	43	SW	6	29.33	-0.6	41	41	41	W	7	0	0	0	0	0	0	0	0.00
SCOTLAND.																			
Silly (St. Mary's) ...	29.16	40	SW	5	29.09	-0.7	44	44	44	W	7	0	0	0	0	0	0	0	0.00
Jersey (St. Helier) ...	29.11	40	SW	5	29.40	-0.3	38	38	38	W	7	0	0	0	0	0	0	0	0.00
Portland Bill ...	29.02	36	SW	4	29.10	-0.1	38	38	38	W	7	0	0	0	0	0	0	0	0.00
Dunstaffnage ...	29.15	42	SW	6	29.40	-0.2	41	41	41	W	7	0	0	0	0	0	0	0	0.00
ENGLAND.																			
Wick ...	29.05	45	SW	3	29.27	-0.2	47	47	47	W	6	0	0	0	0	0	0	0	0.00
Nairn ...	29.07	40	W	3	29.13	-0.1	34	34	34	W	6	0	0	0	0	0	0	0	0.00
Aberdeen ...	29.07	40	W	3	29.13	-0.2	38	38	38	W	6	0	0	0	0	0	0	0	0.00
Leith ...	29.16	47	SW	3	29.04	-0.1	34	34	34	W	8	0	0	0	0	0	0	0	0.00
North Shields ...	29.00	48	SW	3	29.09	-0.1	47	47	47	W	6	0	0	0	0	0	0	0	0.00
IRELAND.																			
Spinn Head ...	29.16	45	SW	3	29.19	-0.3	40	40	40	W	6	0	0	0	0	0	0	0	0.00
Yarmouth ...	29.28	46	SW	4	29.33	-0.1	40	40	40	W	6	0	0	0	0	0	0	0	0.00
Loughborough ...	29.15	40	SW	3	29.16	-0.7	44	44	44	W	6	0	0	0	0	0	0	0	0.00
Oxford ...	29.15	40	SW	3	29.15	-0.7	44	44	44	W	6	0	0	0	0	0	0	0	0.00
London (Greenwich) ...	29.20	42	SW	3	29.15	-0.7	44	44	44	W	6	0	0	0	0	0	0	0	0.00
GERMANY.																			
The Scaw (Humbly Grove) ...	29.17	40	SW	3	29.49	-0.1	37	37	37	W	6	0	0	0	0	0	0	0	0.00
Fano ...	29.23	38	SW	3	29.50	-0.1	32	32	32	W	6	0	0	0	0	0	0	0	0.00
Cuxhaven ...	29.08	40	SW	3	29.38	-0.3	34	34	34	W	6	0	0	0	0	0	0	0	0.00
The Heider ...	29.14	34	SW	3	29.15	-0.7	38	38	38	W	6	0	0	0	0	0	0	0	0.00
Breussel ...	29.14	40	SW	3	29.15	-0.7	41	41	41	W	6	0	0	0	0	0	0	0	0.00
Berlin ...	29.10	40	SW	3	29.16	-0.6	31	31	31	W	6	0	0	0	0	0	0	0	0.00
Frankfurt ...	29.10	41	SW	3	29.17	-0.7	30	30	30	W	6	0	0	0	0	0	0	0	0.00
Munich ...	29.10	39	SW	3	29.19	-0.6	34	34	34	W	6	0	0	0	0	0	0	0	0.00
FRANCE.																			
C. Gris Nez ...	29.20	40	SW	3	29.16	-0.4	44	44	44	W	6	0	0	0	0	0	0	0	0.00
Brest ...	29.14	38	SW	3	29.13	-0.7	40	40	40	W	6	0	0	0	0	0	0	0	0.00
Lorient ...	29.14	40	SW	3	29.14	-0.4	44	44	44	W	6	0	0	0	0	0	0	0	0.00
Rochefort ...	29.08	47	SW	3	29.17	-0.4	44	44	44	W	6	0	0	0	0	0	0	0	0.00
Biarritz ...	29.14	40	SW	3	29.14	-0.1	40	40	40	W	6	0	0	0	0	0	0	0	0.00
SPAIN.																			
Corunna ...	29.03	40	SW	3	29.12	-0.4	40	40	40	W	6	0	0	0	0	0	0	0	0.00
Lisbon ...	29.10	38	SW	3	29.12	-0.4	40	40	40	W	6	0	0	0	0	0	0	0	0.00
Azores (St. Miguel) ...	29.10	38	SW	3	29.12	-0.4	40	40	40	W	6	0	0	0	0	0	0	0	0.00
Terceira (Azores) ...	29.10	38	SW	3	29.12	-0.4	40	40	40	W	6	0	0	0	0	0	0	0	0.00

*NOTE: The barometer for London given in this Table is recorded on the Tower of the Weather Training College, Westminster.
 * Observations for this column not generally recorded. † Observations recorded for this column in Charts on next page.*

Mae gan y Swyddfa Dywydd gofnodion tywydd dyddiol sy'n dyddio'n ôl i 1861.

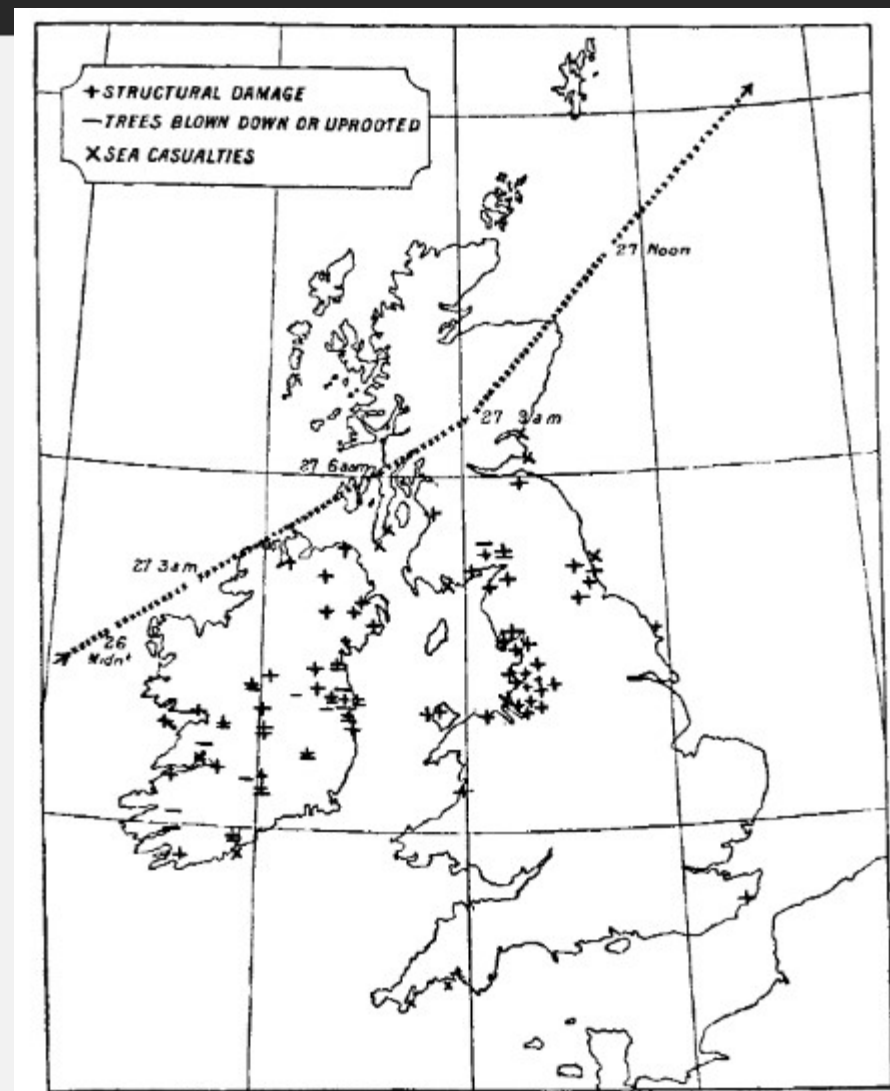
Dyma un enghraifft

Storm Ulysses

26 Chwefror 1903

Ffeithiau a ffigurau Storm Ulysses

- Cofnododd Sefydliad Brenhinol y Badau Achub Cenedlaethol (RNLI) 10 achubiaeth fawr o griw o longau mewn trallod.
- Byddai llawer o leoedd wedi profi gwyntoedd cryfion dros 100mya!
- Glawiad - Mae cyfansymiau o rywfaint o arwyddocâd yn cynnwys: 17.3mm yng Nghronfa Ddŵr Creggan ger Londonderry 25.4mm yng Nghastell Appleby yn Westmorland 22.1mm yn Brookfield ger Caerliwelydd a 24.1mm yn Maxwellton House yn ne-orllewin yr Alban.
- Hyd at 25% o dai yn Nulyn wedi'u difrodi.
- Gwyntoedd hyd at 31ms/69mya yn Iwerddon a 30ms/68mya yn Lloegr.
- 10x llongddylliad mawr
- 1x pier (Morecambe) wedi'i ddifrodi mewn dau le.
- Colli bywyd tua 30



Mae'r llun hwn yn atgynhyrchu'r ffigur cryno o Shaw (1903), sydd hefyd yn dangos llwybr amcangyfrifedig y storm.

Cofnod Tywydd Dyddiol o Storm Ulysses
Chwefror 27ain 1903.

Y darlenniadau pwysicaf i'w nodi:...

WIND VELOCITIES FROM ANEMOGRAPH RECORDS.

Observatory.	Wind Direction.	Time of Occurrence.	Maximum Velocity Recorded.
Valencia	W.S.W.	Midt. 26th-1 a.m., 27th	63 miles in the hour.
Falmouth	S. by W.	"	"
"	S. by W.	11.50 p.m., 26th	88 miles per hour, in squalls.
Armagh	S.S.E.	2-3 a.m., 27th	33 miles in the hour.
Kingstown	W.S.W.	4-5 a.m., 27th	66 " "
Holyhead	S.W.	5-6 a.m., 27th	52 " "
Southport	W.S.W.	6-7 a.m., 27th	65 " "
"	W.S.W.	5-55 a.m., 27th	87 miles per hour, in squalls.
Stonyhurst	W.S.W.	6-7 a.m., 27th	43 miles in the hour.
Glasgow	W.	Noon-1 p.m., 27th	26 " "
Deerness	E.	7-8 a.m., 27th	36 " "
North Shields	S.W.	7-8 a.m., 27th	70 " "
Aberdeen	S.E.	3-4 a.m., 27th	33 " "
Kew	S.S.W.	3-4 a.m., 27th	32 " "
"	S.S.W.	4-7 a.m., 27th	59 miles per hour, in squalls.
Oxford	S.S.W.	3-4 a.m., 27th	34 miles in the hour.
Berkhamsted	S.	2-3 a.m., 27th	23 " "

DAILY WEATHER REPORT

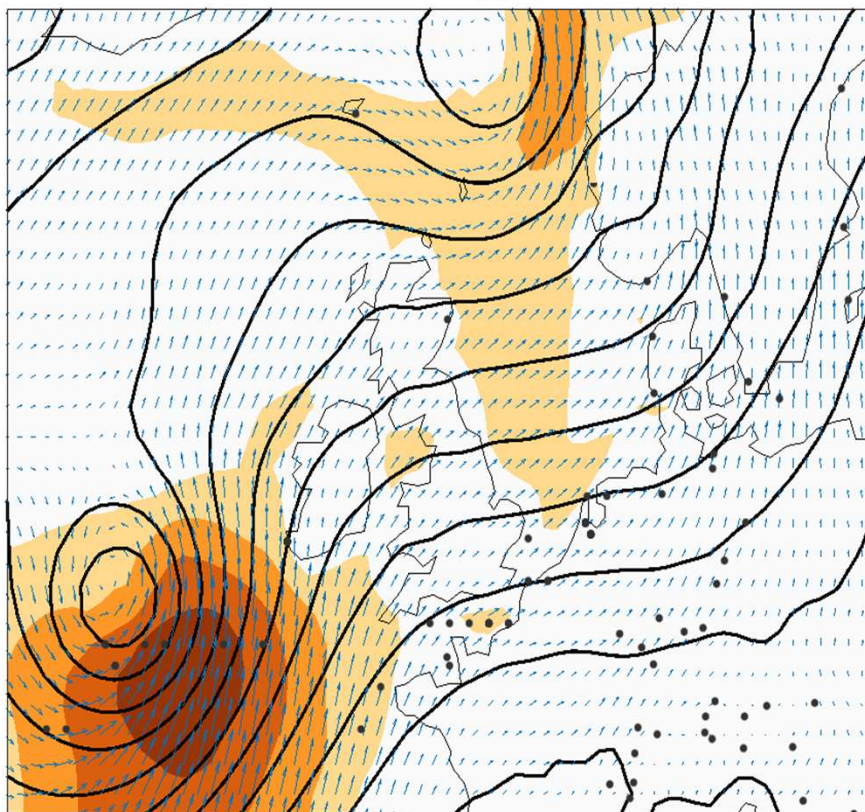
for 8 a.m. on Friday, 27th February, 1903. *2nd edition*
Issued by the METEOROLOGICAL OFFICE, 63, Victoria Street, London. W. N. SHAW, Secretary.

STATIONS.	YESTERDAY EVENING. (See note on last page)					THIS MORNING. (See note on last page)							PAST 24 HOURS.					
	Barom.	Temp.	Wind.	Force	Weather	Barometer.		Temperature.			Wind.		Sea (0 to 9)	Temp.				
						At 8 ^h Fahr. and M.S.L.	Change since Yesterday.	Dry Bulb.	Wet Bulb.	Change since Yesterday.	Dirac.	Force (0 to 12)		Weather.	Max.	Min.	Sun. shine.	
	Ins.	°	Dirac.	(0 to 12)		Ins.	Ins.	°	°	°	Dirac.	(0 to 12)		°	°	Hours.	Ratefall.	
SCANDINAVIA.																		
Haparanda	29.58	19	W	2	0	29.32	-55	32	?	+15	5	2	3	0	?	16	0.79	
Hernösand	29.54	34	SW	2	0	29.26	-42	34	33	+12	W	2	0	0	34	22	0.20	
Stockholm	29.64	38	S	2	0	29.46	-34	38	36	+1	WSW	4	0	0	45	30	0.16	
Wisby	29.75	40	S	4	0	29.73	-30	38	36	+3	SW	4	0	0	45	30	0.16	
Karlstad	29.47	37	S	4	0	29.57	-27	36	34	-1	SW	2	0	0	45	30	0.16	
Færder (X'ania Fjord)	29.29	40	SSW	5	0	29.55	-18	39	37	0	WSW	6	0	4	40	37	0.24	
Bodö	29.36	39	ESE	4	0	29.22	-11	36	34	+1	E	4	0	0	39	35	0.20	
Christiansund	29.23	41	SW	3	0	29.32	-03	37	35	-2	WSW	2	0	5	45	36	0.16	
Skudenesnaes	29.41	40	S	6	0	29.34	-05	39	38	-4	SSE	2	0	5	43	37	0.16	
BRITISH ISLANDS.																		
Sumburgh Head	29.22	41	W	3	0	28.81	+12	37	37	-4	SE	7	0	7	0.5	43	37	0.06
Stormoway	29.26	38	WSW	3	0	28.66	-40	37	36	+2	SE	5	0	5	0.5	46	34	0.06
Malin Head	29.37	38	SW	6	0	29.45	-53	40	40	+4	WSW	9	0	7	0.0	42	35	0.30
Blacksod Pt.	29.23	42	SE	5	0	29.43	-22	40	38	+2	WSW	6	0	5	0.0	43	34	0.53
Valencia	29.12	45	SSE	8	0	29.35	-22	45	44	+3	WSW	7	0	6	0.0	47	40	0.53
Roche's Point	29.38	47	S	7	0	29.37	-21	43	40	+5	WSW	4	0	5	0.0	47	40	0.42
Parsonstown	29.40	42	SE	4	0	29.31	-26	41	38	+7	W	4	0	7	0.0	50	38	0.36
Donaghadee	29.55	42	SW	2	0	28.98	-70	40	40	+4	WSW	9	0	7	0.0	47	32	0.80
Liverpool Obsy.	29.72	41	WSW	4	0	29.05	-42	46	40	+7	WSW	10	0	9	0.0	50	39	0.14
Holyhead	29.62	44	S	6	0	29.09	-37	45	43	+5	W	10	0	9	0.0	45	38	0.36
Pembroke (St. Ann's)	29.72	46	SSW	7	0	29.36	-23	47	44	+4	WSW	8	0	8	0.0	49	43	0.42
SCOTLAND.																		
Scilly (St. Mary's)	29.65	49	S	8	0	29.54	-16	49	47	+3	SW	4	0	7	0.0	51	42	0.28
Jersey (St. Aubins)	30.04	48	SSW	4	0	29.64	-20	50	49	+4	SW	4	0	7	0.0	51	42	0.28
Portland Bill	29.93	46	SW	5	0	29.55	-14	49	47	+4	WSW	6	0	7	0.0	50	43	0.09
Dungeness	29.98	46	WSW	6	0	29.59	-09	49	48	+4	SW	9	0	6	0.0	50	43	0.09
ENGLAND.																		
Wick	29.31	38	W	4	0	28.46	-54	42	42	-4	S	6	0	7	0.0	44	34	0.15
Nairn	29.36	35	SW	1	0	28.39	-67	40	39	+4	E	1	0	1	0.0	42	32	0.06
Aberdeen	29.47	38	SW	3	0	28.37	-77	43	41	+5	SE	5	0	1	0.0	45	35	0.23
Leith	29.50	42	WSW	3	0	28.50	-60	45	44	+5	WSW	3	0	1	0.0	46	36	0.25
North Shields	29.61	41	SW	3	0	28.58	-79	44	41	+4	SW	8	0	2	0.0	46	38	0.20
IRELAND.																		
Yarn Head	29.76	42	WSW	5	0	29.01	-45	48	46	+7	SW	9	0	8	0.0	50	41	0.04
Yarmouth	29.84	45	WSW	5	0	29.33	-21	51	47	+5	SW	7	0	8	0.0	51	39	0.04
Loughborough	29.84	42	SW	2	0	29.45	-19	48	43	+8	SW	4	0	8	0.0	51	39	0.04
Oxford	29.93	44	WSW	4	0	29.49	-16	50	47	+6	WSW	6	0	8	0.0	50	41	0.10
GERMANY & FRANCE.																		
The Scaw (Skagen)	29.50	40	W	4	0	29.64	-12	37	36	-2	WSW	4	0	1	0.0	41	36	0.20
Fanø	29.77	39	SSW	6	0	29.63	-12	38	37	-3	SSW	8	0	0	0.0	43	37	0.16
Cuxhaven	29.76	42	SW	5	0	29.76	-08	38	36	-5	S	4	0	0	0.0	46	36	0.16
The Helder	29.89	44	SW	5	0	29.45	-19	47	45	-1	SW	4	0	6	0.0	46	39	0.04
Brussels	30.02	48	S	8	0	29.74	-09	50	44	+5	SSW	6	0	4	0.0	50	38	0.04
Berlin	30.02	43	SW	2	0	30.11	+01	36	35	-1	SSW	2	0	4	0.0	50	34	0.04
Frankfurt	30.21	42	W	2	0	30.04	+04	38	36	-2	SW	2	0	0	0.0	50	36	0.04
Munich	30.28	44	W	5	0	30.25	+06	36	35	+5	SE	3	0	0	0.0	50	31	0.04
SPAIN & PORTUGAL.																		
C. Gris Nez	30.02	45	SW	6	0	29.57	-16	47	46	+2	SW	7	0	7	0.0	45	43	0.04
Brest	29.97	50	S	4	0	29.47	-18	51	50	+5	SW	4	0	7	0.0	47	37	0.08
Lorient	30.02	50	SSW	6	0	29.73	-20	52	52	+4	SW	6	0	8	0.0	54	48	0.24
Rochefort	30.21	51	SW	4	0	30.05	-03	52	51	+1	S	4	0	8	0.0	55	45	0.04
Biarritz	30.30	54	W	2	0	30.12	-10	58	56	+4	S	4	0	8	0.0	61	50	0.04
AFRICA.																		
Paris	30.17	48	SW	3	0	29.41	-03	51	46	+3	SSW	6	0	8	0.0	57	42	0.04
Belfort	30.24	45	W	4	0	30.19	+05	40	37	-4	WSW	2	0	8	0.0	51	37	0.04
Lyons	30.25	46	SE	1	0	30.26	+02	44	41	-5	S	3	0	8	0.0	57	37	0.04
Nice	30.33	47	SSW	1	0	30.36	+03	43	41	-2	E	1	0	2	0.0	57	41	0.04
Perpignan	30.35	51	W	0	0	30.27	+06	42	42	-5	W	1	0	8	0.0	65	41	0.04
ISLANDS.																		
Corunna	30.49	58	SSW	4	0	30.00	-120	57	54	+4	SSW	6	0	6	0.0	59	49	0.04
Lisbon	30.44	58	SW	2	0	30.36	-02	56	53	+3	SSW	4	0	8	0.0	61	53	0.04
Azores (P. Belgada)	30.46	61	SW	7	0	30.05	-12	58	54	-1	WSW	6	0	8	0.0	63	57	0.04
" (Horta)	29.88	60	SW	7	0	30.05	+04	55	49	-6	WSW	4	0	2	0.0	63	54	0.16

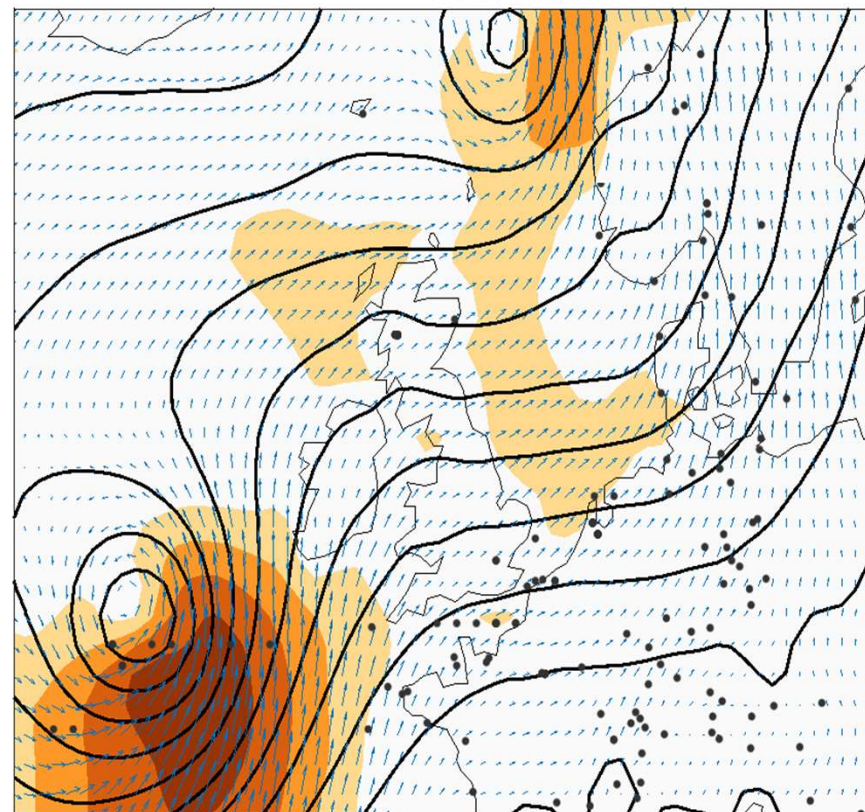
NOTE: The Sunshine for London given in this Table is recorded on the Tower of the Wesleyan Training College, Westminster.
* Observations for this column not generally received. † Observations received too late for insertion in Charts on next page.

Mae'r oren tywyllach yn dangos cryfder y gwynt wrth iddo basio dros y DU ac Iwerddon

ORIGINAL: 1903/02/26 1500

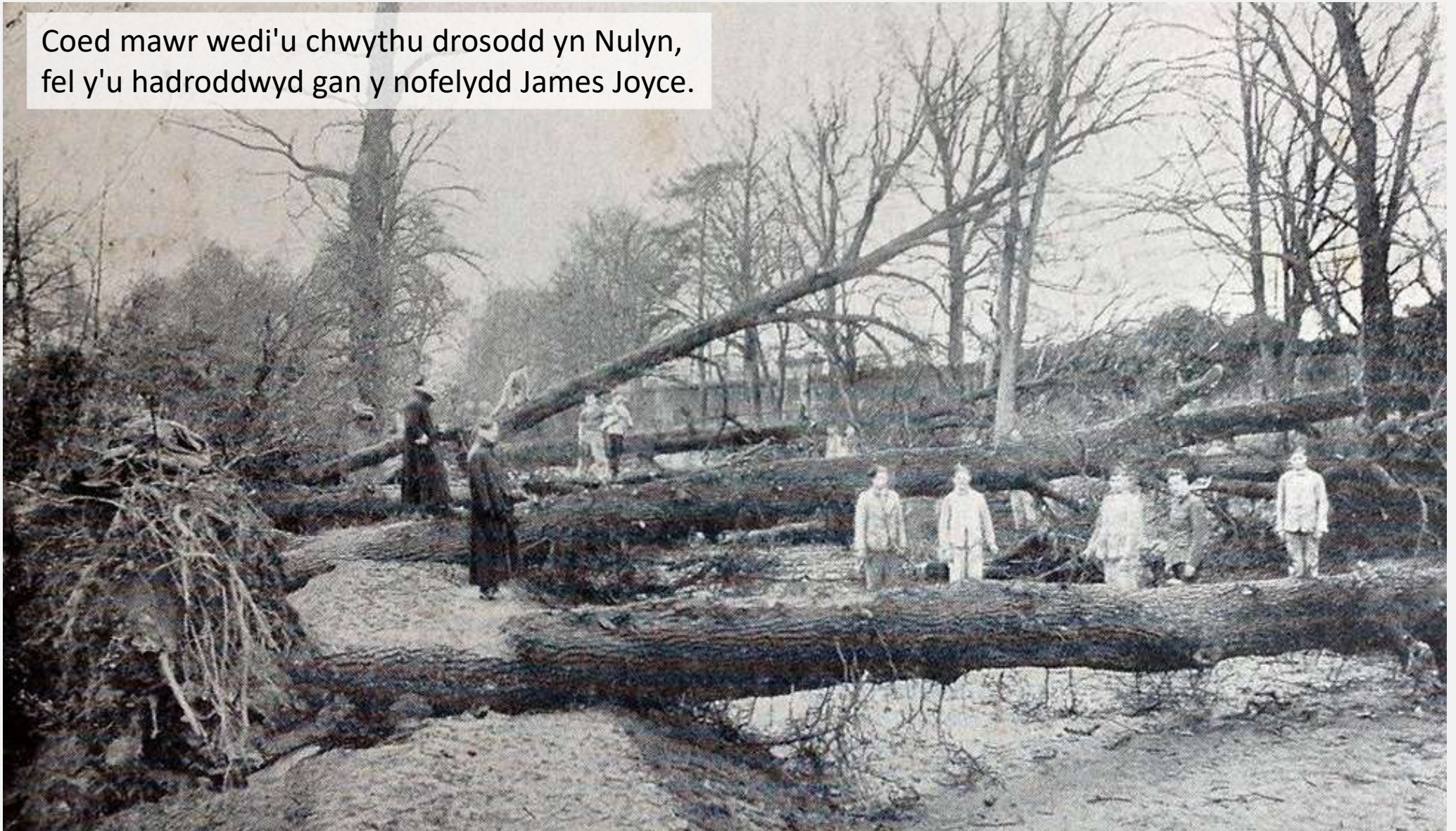


IMPROVED: 1903/02/26 1500



Mae'r dotiau ar y mapiau'n dangos ble mae gennym arsylwadau o'r cyfnod cyn ac ar ôl y gwaith achub data - gyda mwy o ddata gallwn ail-greu'r storm yn gywir. Mae'n golygu y gallwn weld mwy o isobarau yn yr animeiddiad ar y dde sy'n dangos cryfder y gwyntoedd yn fwy cywir.

Coed mawr wedi'u chwythu drosodd yn Nulyn, fel y'u hadroddwyd gan y nofelydd James Joyce.

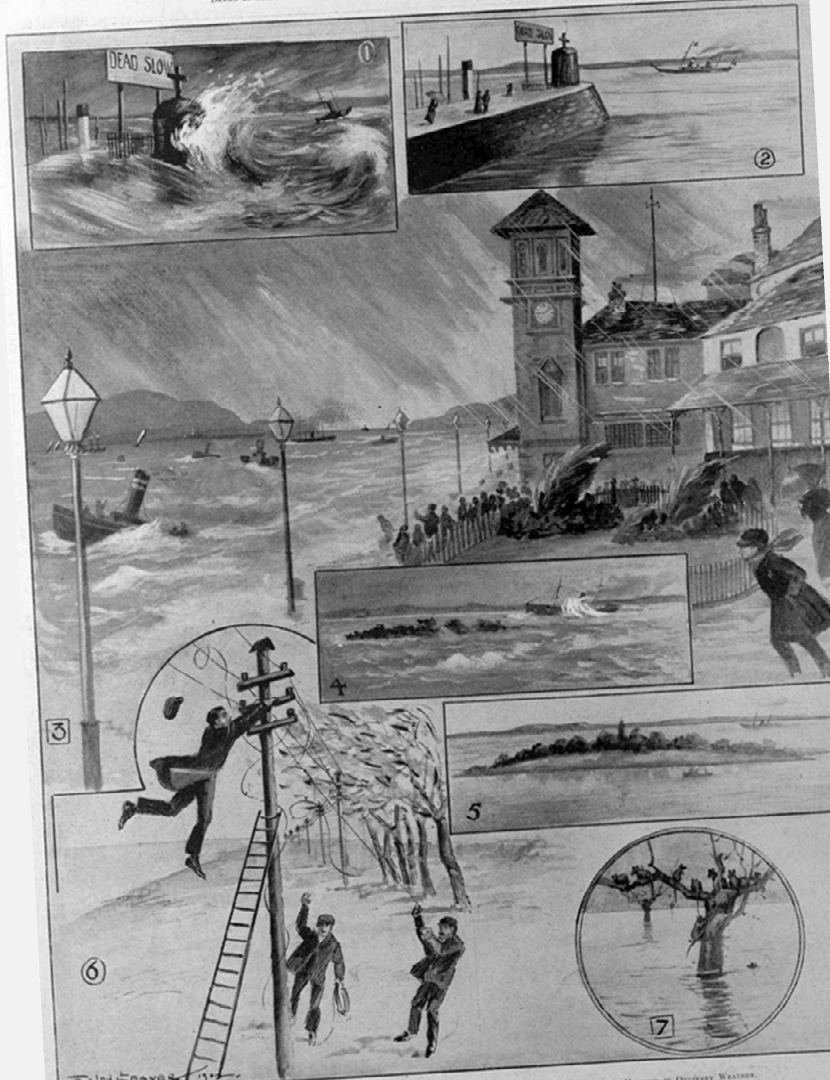


Mae cerdyn post o'r cyfnod yn darlunio difrod i Bier Morecambe.



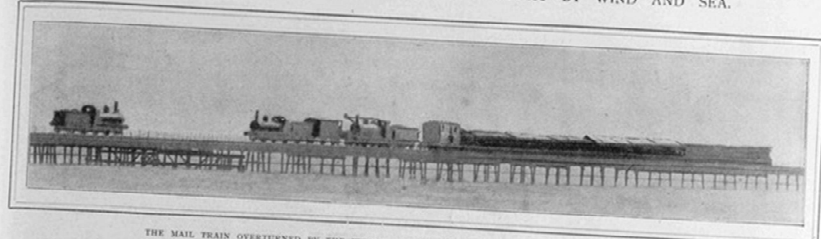


THE GREAT GALE: SCENES OF THE TEMPEST ON THE CLYDE.
DRAWN BY RAULF CRAVENS FROM SKETCHES BY W. A. DONNELLY, OUR SPECIAL ARTIST ON THE CLYDE.



1. THE WAVES LASHING OVER THE "DEAD SLOW" MARK AT EDWING HARBOUR. 2. THE SCENE AT GREENOCK QUAY, FEBRUARY 27, THE WAVES COMING OVER THE PIER AND BEATING AGAINST THE ANCHORING VESSELS. 3. THE FUNERAL OF A CAUSE FLEET BARGE. 4. THE PIER OF REPAIRS TO THE TELEGRAPH WORK. 5. A WORKMAN DOWN FROM HIS LADDER ON CLYDEBANK. 6. THE PIER OF REPAIRS TO THE TELEGRAPH WORK. 7. A WORKMAN DOWN FROM HIS LADDER ON CLYDEBANK.

THE GREAT GALE: SCENES OF HAVOC WROUGHT BY WIND AND SEA.



THE MAIL TRAIN OVERTURNED BY THE WIND ON THE LEVEN VIADUCT, NEAR ULVERSTON, FEBRUARY 27.



THE DAMAGE DONE TO RHYL PIER, SHOWING THE OVERTURNED KIOSK.



THE WEST END OF PIER, MORECAMBE, AFTER THE STORM OF FEBRUARY 27.



THE WRECK OF THE S.S. "RENEWICK" ON GYLLYNVASE BEACH, FALMOUTH, FEBRUARY 26.



THE WRECK OF THE "DAISY" IN WHITSAND BAY, NEAR PLYMOUTH.



THE RUINS OF THE ROMAN CATHOLIC IRON CHURCH AT GREYSTONES, BLOWN DOWN ON FEBRUARY 26.



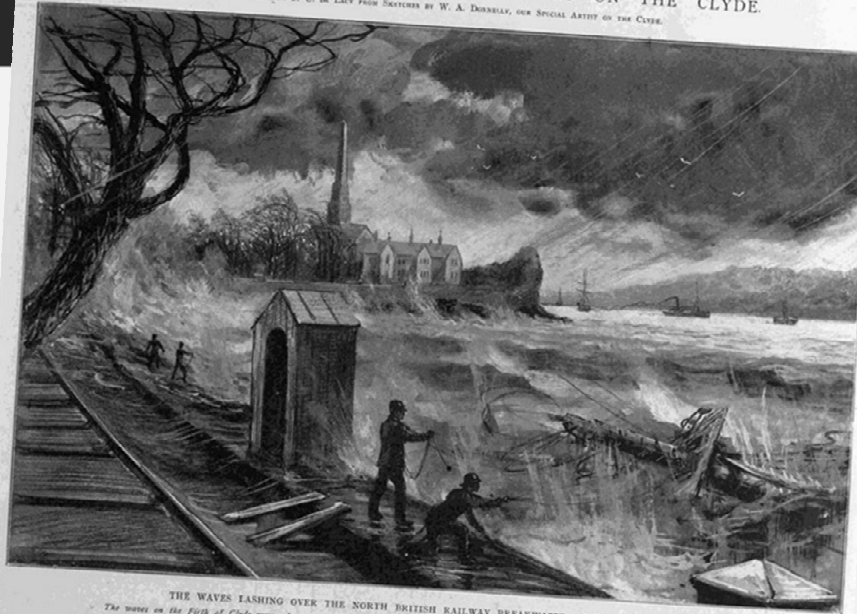
THE REMAINS OF ST. ELOG'S CHURCH, HOLYHEAD, DESTROYED BY THE GALE ON FEBRUARY 26.

The train on the Furness Railway had reached the middle of the Leven Viaduct when a furious gale met it. Five persons were injured and three are missing. All three and afterwards the pier, injured were rescued by the coastguard with the assistance of the life-boat. The crew of the "Daisy", which was bound from Plymouth to Liverpool, were also rescued. The crew of the "Daisy" consisted of eight hundred persons. It withstood the great gale of November 1901, but last week's tempest reduced it to ruins in less than half an hour. On the pier-head of Greenock, which was at that illustrated were here by the waves. Another church destroyed by the storm, near St. Asaph's, Merioneth. The building, which had just been erected, was lifted bodily from its foundations and completely wrecked. It could hold three hundred and fifty persons.

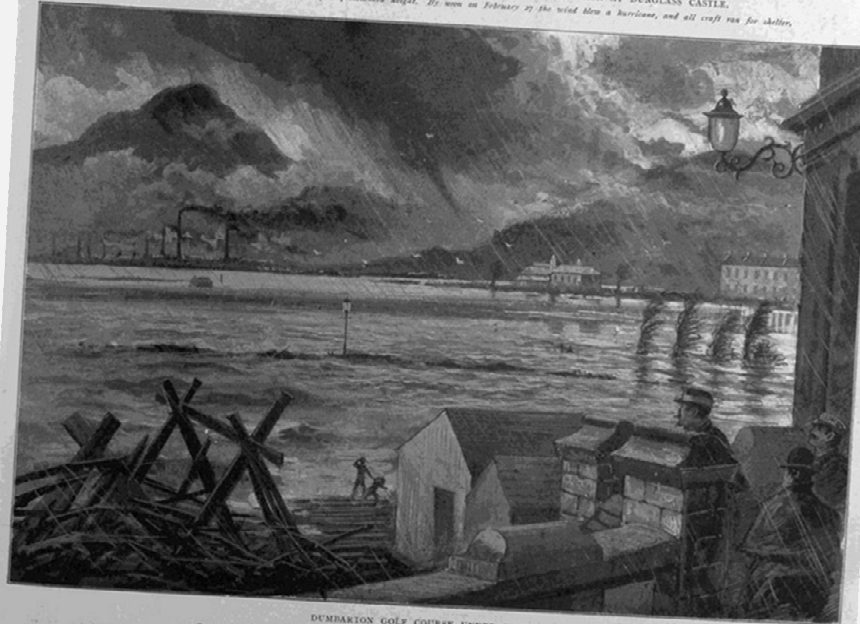
THE ILLUSTRATED LONDON NEWS, MARCH 7, 1903.—255

THE GREAT GALE: SCENES OF HAVOC ON THE CLYDE

Drawn by C. DE LACY FROM SKETCHES BY W. A. DONKELAY, OUR SPECIAL ARTIST IN THE CLYDE.

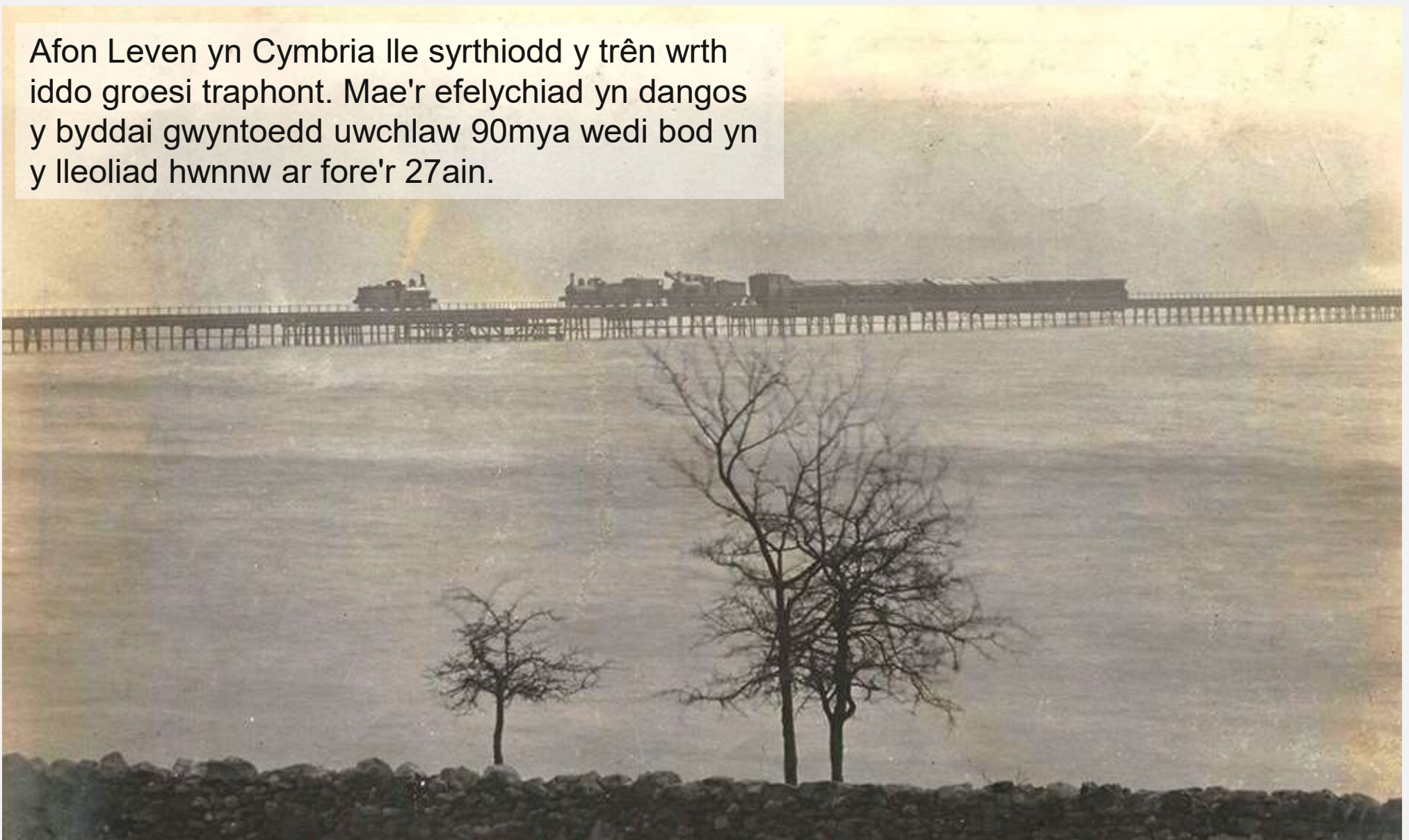


THE WAVES LASHING OVER THE NORTH BRITISH RAILWAY BREAKWATER AT DUGLASS CASTLE.
The waves on the Firth of Clyde were of unprecedented height. By noon on Saturday the wind blew a hurricane, and all craft ran for shelter.



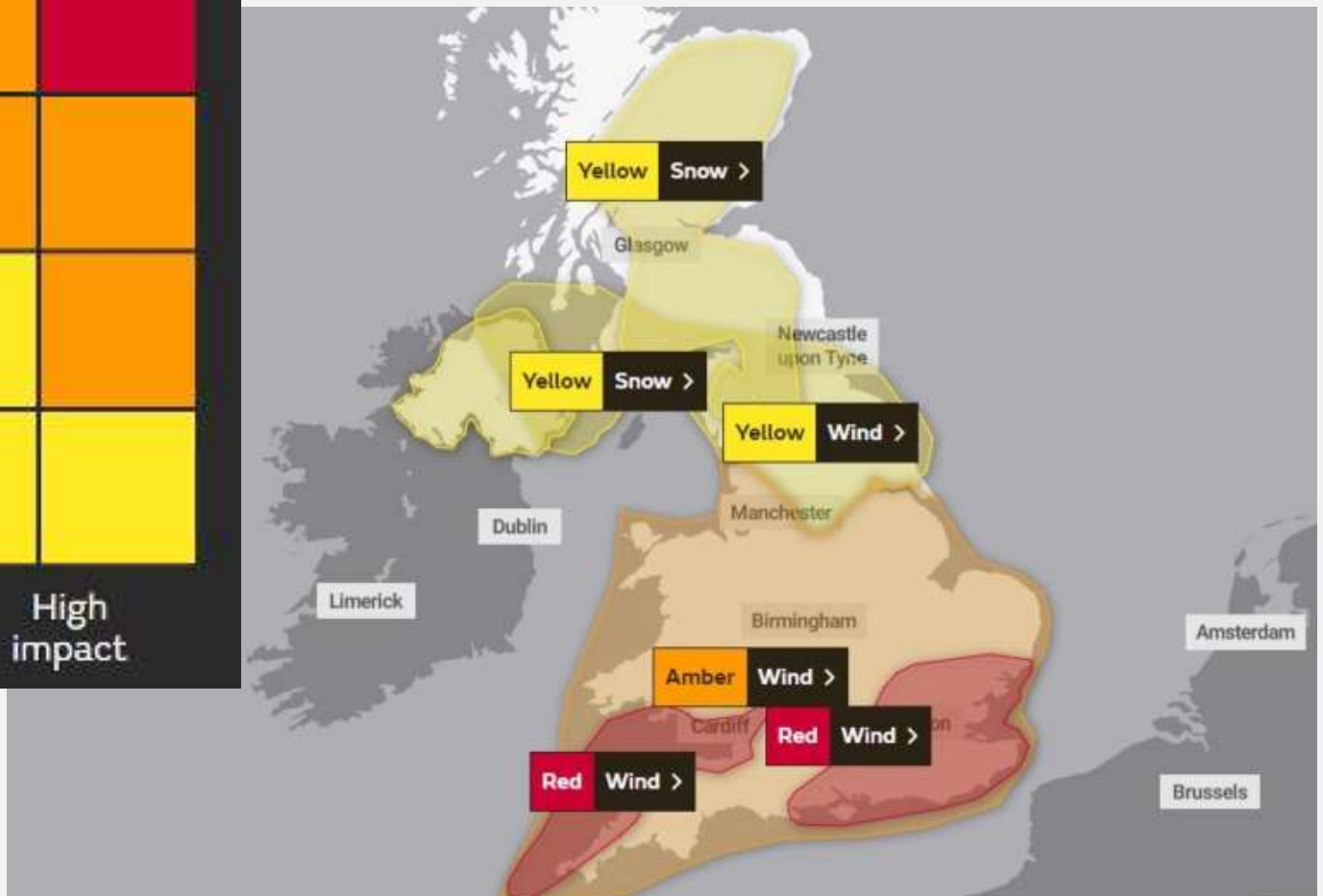
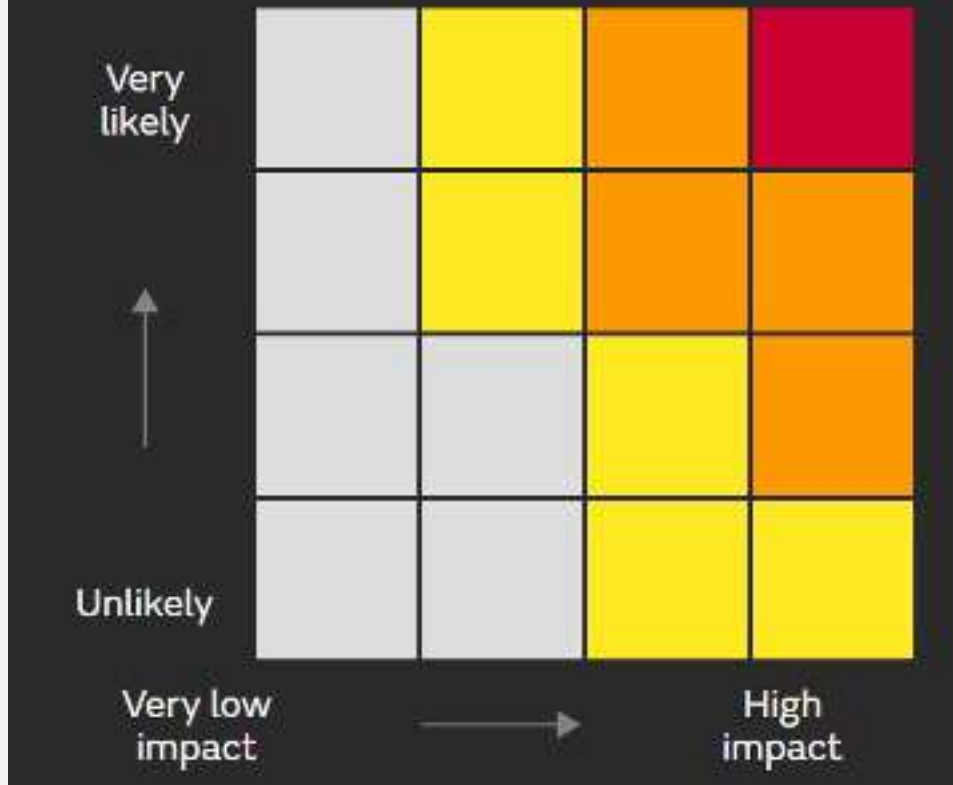
DUMBARTON GOLF COURSE UNDER WATER.
From the heights of Dumbarton there rushed a cascade two hundred feet high, with grandly picturesque effect.

Afon Leven yn Cymbria lle syrthiodd y trê'n wrth iddo groesi traphont. Mae'r efelychiad yn dangos y byddai gwyntoedd uwchlaw 90mya wedi bod yn y lleoliad hwnnw ar fore'r 27ain.



Yn y cyfnod modern

Warning impact matrix

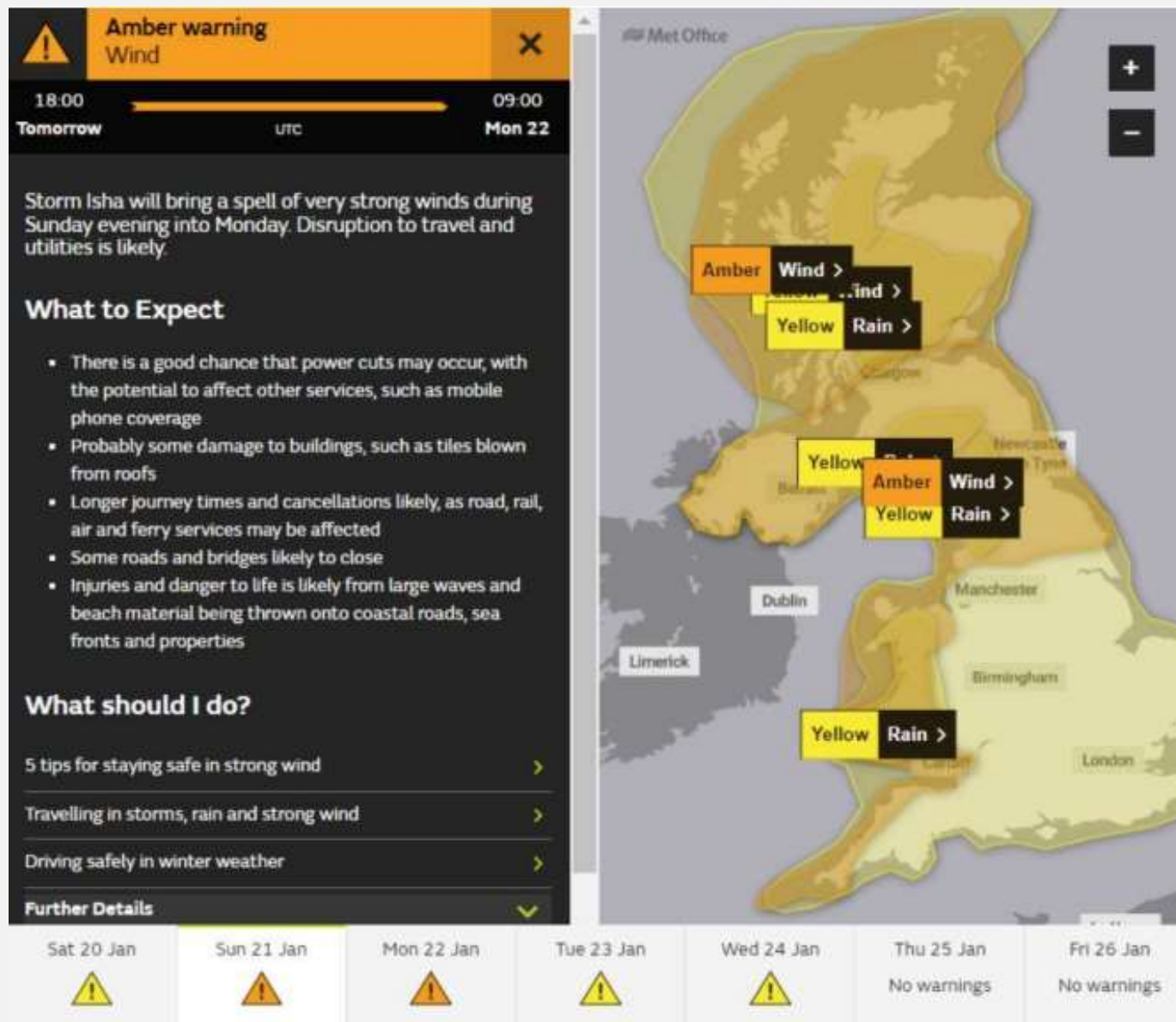


<https://www.youtube.com/watch?v=-ioFGbugRVM>

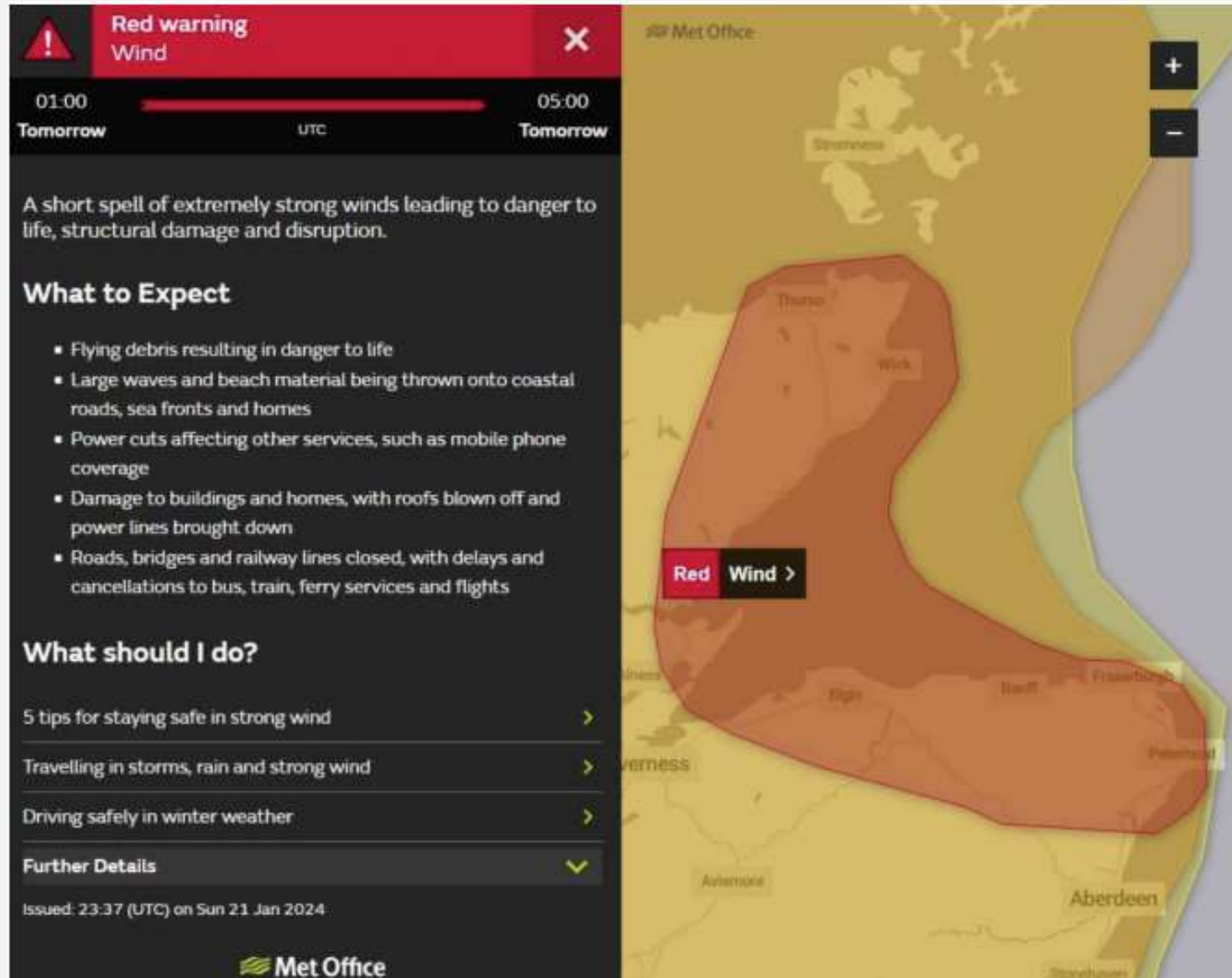


Tasg Rhybuddio Tywydd

Storm Isha a Storm Jocelyn 21-24 Ionawr 2024



Ffocws rhybudd
coch



Red warning
Wind

01:00 Tomorrow UTC 05:00 Tomorrow

A short spell of extremely strong winds leading to danger to life, structural damage and disruption.

What to Expect

- Flying debris resulting in danger to life
- Large waves and beach material being thrown onto coastal roads, sea fronts and homes
- Power cuts affecting other services, such as mobile phone coverage
- Damage to buildings and homes, with roofs blown off and power lines brought down
- Roads, bridges and railway lines closed, with delays and cancellations to bus, train, ferry services and flights

What should I do?

- 5 tips for staying safe in strong wind >
- Travelling in storms, rain and strong wind >
- Driving safely in winter weather >
- Further Details ✓

Issued: 23:37 (UTC) on Sun 21 Jan 2024

Met Office

Map showing a Red warning area over the North Sea coast of Scotland, including locations like Wick, Inverness, Aberdeen, and Stonehaven. A 'Red Wind >' button is overlaid on the map.

Sun 16 Feb	Mon 17 Feb	Tue 18 Feb	Wed 19 Feb	Thu 20 Feb	Fri 21 Feb	Sat 22 Feb
		No warnings	No warnings	No warnings	No warnings	No warnings

Red warning
✕

06:10
11:00

Today
UTC
Today

Storm Dennis is expected to bring further heavy rain for a time on Sunday morning, increasing the likelihood of high impacts.

What to expect

- Danger to life from fast flowing or deep floodwater
- Extensive flooding to homes and businesses is likely
- Collapsed or damaged buildings or bridges
- Road closures and bus and train service delays and cancellations
- Dangerous driving conditions because of spray and flooded roads
- Loss of power and other essential services, such as gas, water, mobile phone service
- Communities could be completely cut off by floodwater, perhaps for several days