

 Winds of Change: Weather Hazards
Storm Ulysses (1903) to present day





What do we mean by extreme weather?

Which pictures represent an extreme weather event?



March 2018 - [Beast from the East](#)
(Snow and Low Temperatures)



Red warning
for extreme heat



1st-2nd November 2023
– [Storm Ciaran](#)





Edward VII was on the throne. Eldest son of Queen Victoria.



19th January – First transatlantic radio broadcast between United States and Britain.



Feb 15th – First Teddy Bear went on sale.



Dec 17 - first flight by the Wright brothers.

 **Met Office** Life in the UK in 1900's

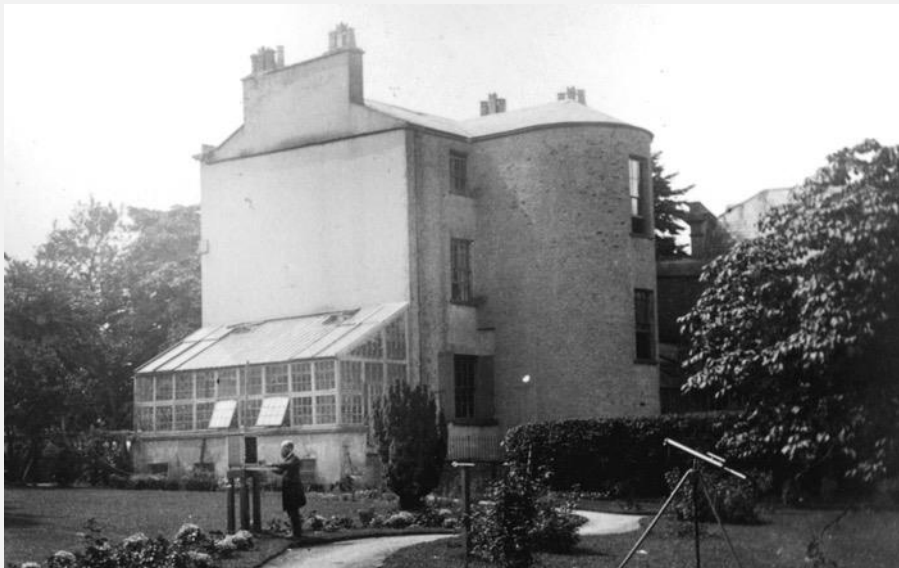




Seathwaite, Lake District



Kew Observatory



Cheltenham

Met Office Daily weather report example

DAILY WEATHER REPORT

for 8 a.m. on **SUNDAY 1ST FEBRUARY 1903**
 Issued by the METEOROLOGICAL OFFICE, 63, Victoria Street, London. W. N. SHAW, Secretary.

STATIONS.	YESTERDAY EVENING (See note on last page)				THIS MORNING (See note on last page)										PAST 24 HOURS			
	Barom.		Temp.	Wind	Barometer		Temperature				Wind		Rain		Max.		Min.	
	at sea and M.S.L.	at land	at land	at land	at sea and M.S.L.	at sea and M.S.L.	at sea and M.S.L.	at sea and M.S.L.	at sea and M.S.L.	at sea and M.S.L.	at sea and M.S.L.	at sea and M.S.L.	at sea and M.S.L.	at sea and M.S.L.	at sea and M.S.L.	at sea and M.S.L.	at sea and M.S.L.	
SCANDINAVIA.																		
Haparanda ...	29.33	9	7	W	0	29.76	-0.6	21	22	+4	SE	2	0	+	-	7	-4	+ 0.8
Honnäsund ...	29.24	20	2	W	0	29.49	-1.0	20	19	+4	W	2	0	+	-	24	14	+ 0.1
Stockholm ...	29.23	41	SEW	W	0	29.66	-0.8	28	25	+3	SEW	6	0	+	-	41	24	+ 0.1
Widby ...	29.22	34	W	W	0	29.86	-0.1	27	25	0	SEW	14	0	+	-	41	22	+ 0.1
Karlskrona ...	29.25	40	W	W	0	29.40	-0.8	25	25	0	SEW	6	0	+	-	40	25	+ 0.1
Färder or Västergötland ...	29.20	37	W	W	0	29.20	-0.7	27	27	0	SEW	6	0	+	-	37	25	+ 0.1
Boddö ...	29.01	31	E	W	0	28.90	-0.5	41	40	-1	SEW	5	0	+	-	7	18	+ 0.1
Christianstund ...	29.12	43	W	W	4	29.02	-1.0	44	38	-2	W	3	0	+	-	45	34	+ 0.1
Skudenesnes ...	29.24	43	SEW	W	0	29.20	-0.3	40	34	-4	W	5	0	+	-	46	34	+ 0.1
BRITISH ISLANDS.																		
Sunbury Head ...	29.28	44	SEW	W	0	29.23	-0.5	43	43	-1	W	5	0	+	-	44	43	+ 0.1
Sternoway ...	29.24	46	SEW	W	0	29.23	-0.1	35	34	-1	W	3	0	+	-	46	34	+ 0.1
Malin Head ...	29.25	46	SEW	W	0	29.01	-0.4	35	25	-4	W	7	0	+	-	46	25	+ 0.1
Blackod Pt. ...	29.10	34	W	W	8	29.25	-1.0	34	25	-1	W	7	0	+	-	34	25	+ 0.1
Valencia ...	29.28	40	W	W	7	29.23	-0.5	40	35	-7	W	6	0	+	-	40	35	+ 0.1
Roches Point ...	29.14	43	W	W	5	29.28	-1.7	37	36	-1	W	5	0	+	-	43	36	+ 0.1
Fassinstown ...	29.10	46	W	W	5	29.28	-1.0	35	35	-1	W	5	0	+	-	46	35	+ 0.1
Donaghadee ...	29.13	46	W	W	3	29.27	-1.1	35	34	-1	W	4	0	+	-	46	34	+ 0.1
Liverpool Obey ...	29.22	44	SEW	W	3	29.16	-0.5	39	35	-1	W	7	0	+	-	44	35	+ 0.1
Holyhead ...	29.21	47	SEW	W	2	29.28	-0.9	38	35	-1	W	5	0	+	-	47	35	+ 0.1
Pembroke (St. Ann's) ...	29.27	43	W	W	6	29.31	-0.4	41	38	-1	W	7	0	+	-	43	38	+ 0.1
GERMANY, &c.																		
Silly (St. Mary's) ...	29.30	44	W	W	8	29.44	-1.4	44	43	-1	W	7	0	+	-	44	43	+ 0.1
Jersey (St. Helier) ...	29.31	46	SEW	W	7	29.30	-0.1	43	38	-1	W	7	0	+	-	46	38	+ 0.1
Portland Bill ...	29.23	46	SEW	W	6	29.20	-0.3	38	35	-1	W	7	0	+	-	46	35	+ 0.1
Dungeness ...	29.25	45	SEW	W	6	29.40	-1.1	41	43	+1	W	7	0	+	-	45	43	+ 0.1
FRANCE.																		
Wick ...	29.25	45	W	W	3	29.27	-0.2	37	35	-2	W	6	0	+	-	45	35	+ 0.1
Nairn ...	29.07	46	W	W	3	29.23	-0.1	34	34	+1	W	1	0	+	-	46	34	+ 0.1
Aberdeen ...	29.21	44	W	W	3	29.15	-0.7	38	38	-7	W	3	0	+	-	44	38	+ 0.1
Leith ...	29.26	47	SEW	W	3	29.24	-0.2	39	35	+1	W	3	0	+	-	47	35	+ 0.1
North Shields ...	29.40	44	SEW	W	3	29.28	-0.2	37	35	-1	W	3	0	+	-	44	35	+ 0.1
Spinn Head ...	29.24	43	W	W	3	29.28	-0.4	40	39	-1	W	6	0	+	-	43	39	+ 0.1
Yarmouth ...	29.28	44	SEW	W	3	29.25	-0.3	41	38	-1	W	5	0	+	-	44	38	+ 0.1
Loughborough ...	29.25	44	W	W	3	29.24	-0.1	39	35	-2	W	3	0	+	-	44	35	+ 0.1
Oxford ...	29.25	44	W	W	3	29.25	-0.2	43	43	-1	W	5	0	+	-	44	43	+ 0.1
London (Heath) ...	29.26	42	W	W	3	29.25	-0.1	43	43	-1	W	5	0	+	-	42	43	+ 0.1
GERMANY, &c.																		
The Scaw (Humber) ...	29.27	40	SEW	W	3	29.28	-0.1	37	35	-1	W	6	0	+	-	40	35	+ 0.1
Fano ...	29.23	35	W	W	3	29.30	-0.7	35	32	-1	W	6	0	+	-	35	32	+ 0.1
Cuxhaven ...	29.09	40	SEW	W	3	29.38	-0.3	34	32	-1	W	5	0	+	-	40	32	+ 0.1
The Heider ...	29.24	33	SEW	W	3	29.32	-0.8	41	35	-1	W	5	0	+	-	33	35	+ 0.1
Rosenthal ...	29.24	34	SEW	W	3	29.21	-0.3	43	39	-1	W	5	0	+	-	43	39	+ 0.1
Berlin ...	29.10	26	SEW	W	1	29.26	-0.6	31	30	-1	W	1	0	+	-	26	30	+ 0.1
Frankfurt ...	29.12	41	SEW	W	2	29.27	-0.5	30	30	-2	W	5	0	+	-	41	30	+ 0.1
Munich ...	29.21	33	SEW	W	3	29.23	-0.2	35	34	+3	W	3	0	+	-	33	34	+ 0.1
FRANCE.																		
C. Gris Nez ...	29.25	41	SEW	W	3	29.28	-0.3	40	40	0	W	6	0	+	-	41	40	+ 0.1
Brest ...	29.26	36	SEW	W	3	29.23	-0.3	40	38	-1	W	6	0	+	-	36	37	+ 0.1
Lorient ...	29.25	30	SEW	W	3	29.24	-0.1	44	44	-2	W	6	0	+	-	30	37	+ 0.1
Rochefort ...	29.26	47	SEW	W	3	29.27	-0.2	46	46	+1	W	7	0	+	-	47	46	+ 0.1
Biarritz ...	29.27	30	SEW	W	3	29.24	-0.3	40	40	0	W	6	0	+	-	30	40	+ 0.1
FRANCE.																		
Paris ...	29.23	39	SEW	W	3	29.27	-0.4	43	40	+1	W	1	0	+	-	39	40	+ 0.1
Belfort ...	29.18	34	SEW	W	3	29.27	-0.9	37	33	+1	W	5	0	+	-	34	33	+ 0.1
Lyon ...	29.21	44	SEW	W	3	29.25	-0.6	45	41	+5	W	4	0	+	-	44	41	+ 0.1
Nice ...	29.24	46	SEW	W	3	29.19	-0.5	45	39	+2	W	1	0	+	-	46	39	+ 0.1
Perpignan ...	29.21	44	SEW	W	3	29.23	-0.3	35	35	-3	W	1	0	+	-	44	35	+ 0.1
SPAIN.																		
Corunna ...	29.21	36	SEW	W	3	29.26	-0.5	39	37	0	W	5	0	+	-	36	37	+ 0.1
Lisbon ...	29.20	26	SEW	W	3	29.23	-0.3	35	35	-1	W	5	0	+	-	26	35	+ 0.1
Azores (St. Maria) ...	29.21	25	SEW	W	3	29.21	-0.4	35	35	0	W	1	0	+	-	25	35	+ 0.1

NOTE: The Sunsets for London given in this Table is recorded on the Tower of the Wireless Training College, Westminster.
 * Observations for this column not probably needed. † Observations retained in lists for mention in Charts on next page.

The Met Office have daily weather records dating back to 1861.

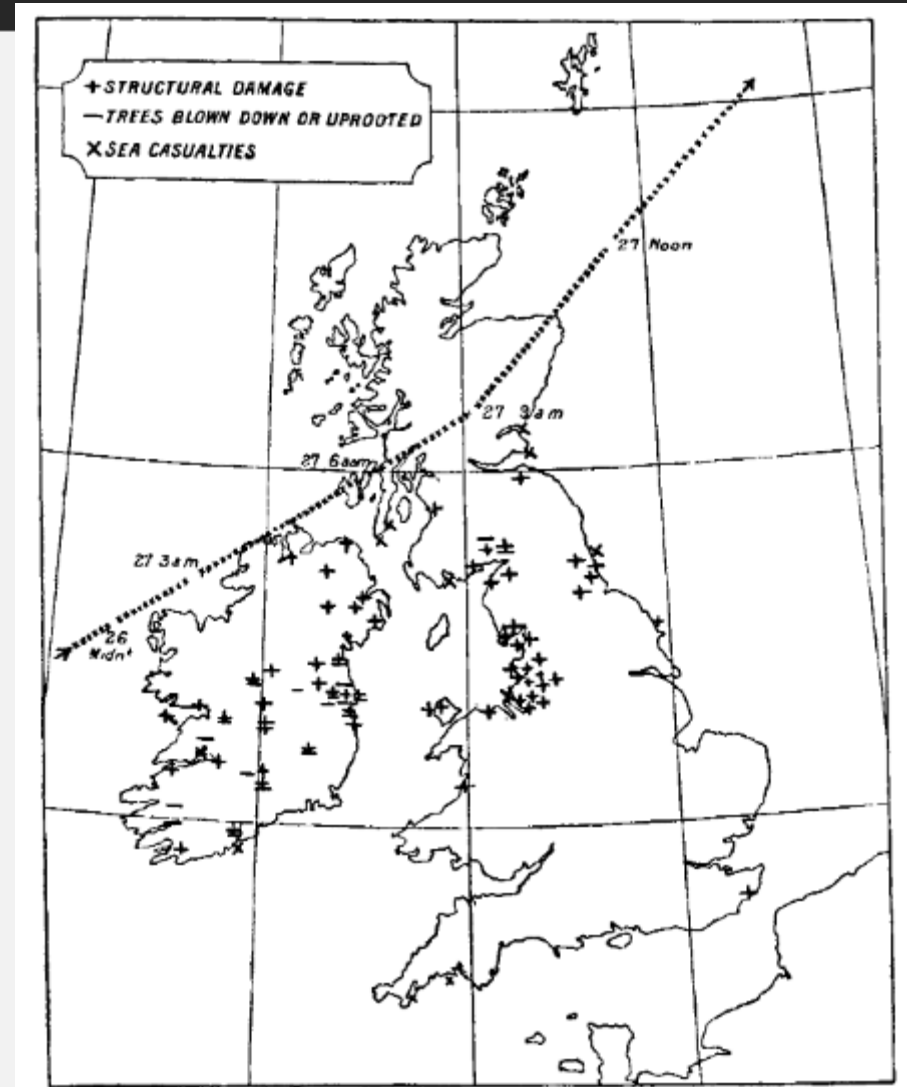
This is one example

Storm Ulysses

26th February 1903

Storm Ulysses facts and figures

- Royal National Lifeboat Institution (RNLI) recorded 10 major rescues of crew from ships in distress.
- Many places would have experienced gusts in excess of 100mph!
- Rainfall - Totals of some significance include:
 - 17.3mm at Creggan Reservoir near Londonderry
 - 25.4mm at Appleby Castle in Westmorland
 - 22.1mm at Brookfield near Carlisle and 24.1mm at Maxwellton House in the south west of Scotland.
- Up to 25% of houses in Dublin damaged.
- Winds up to 31ms/69mph in Ireland and 30ms/68mph in England.
- 10x major shipwrecks
- 1x pier (Morecambe) damaged in two places.
- Loss of life c.30



This picture reproduces the summary figure from Shaw (1903), which also indicates the estimated path of the storm.

Daily Weather record from Storm Ulysses February 27th 1903.

Most significant readings to note:...

WIND VELOCITIES FROM ANEMOGRAPH RECORDS.

Observatory.	Wind Direction.	Time of Occurrence.	Maximum Velocity Recorded.
Valencia	W.S.W.	Midt. 26th-1 a.m., 27th	63 miles in the hour.
Falmouth	S. by W.	"	"
"	S. by W.	11.50 p.m., 26th	88 miles per hour, in squalls.
Armagh	S.S.E.	2-3 a.m., 27th	33 miles in the hour.
Kingstown	W.S.W.	4-5 a.m., 27th	66 " "
Holyhead	S.W.	5-6 a.m., 27th	52 " "
Southport	W.S.W.	6-7 a.m., 27th	65 " "
"	W.S.W.	5-55 a.m., 27th	87 miles per hour, in squalls.
Stonyhurst	W.S.W.	6-7 a.m., 27th	43 miles in the hour.
Glasgow	W.	Noon-1 p.m., 27th	26 " "
Deerness	E.	7-8 a.m., 27th	36 " "
North Shields	S.W.	7-8 a.m., 27th	70 " "
Aberdeen	S.E.	3-4 a.m., 27th	33 " "
Kew	S.S.W.	3-4 a.m., 27th	32 " "
"	S.S.W.	4-7 a.m., 27th	59 miles per hour, in squalls.
Oxford	S.S.W.	3-4 a.m., 27th	34 miles in the hour.
Berkhamsted	S.	2-3 a.m., 27th	23 " "

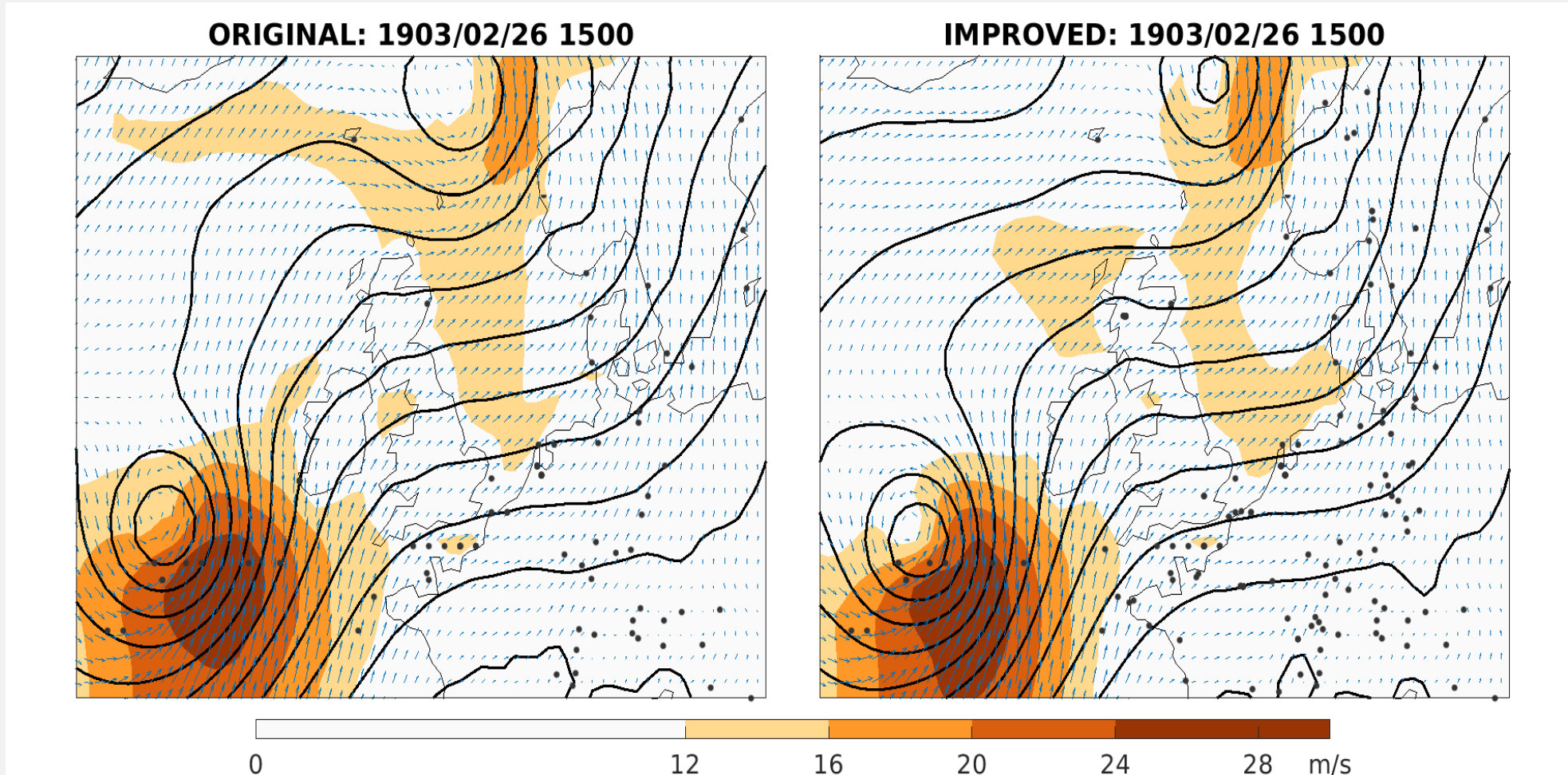
DAILY WEATHER REPORT

for 8 a.m. on *Friday, 27th February, 1903.* 2nd edition
 Issued by the METEOROLOGICAL OFFICE, 63, Victoria Street, London. *W. N. SHAW, Secretary.*

STATIONS.	YESTERDAY EVENING. (See note on last page.)					THIS MORNING. (See note on last page.)					PAST 24 HOURS.							
	Barom.	Temp.	Wind.	Force	Weather	Barometer.	Temperature.	Wind.	Force	Weather.	Sun (0 to 9)	Weather.	Max.	Min.	Sun- shine.	Rainfall.		
	At 8 th and M.S.L.	Dry Bulb.	Dirac.	(0 to 12)		At 8 th Fahr. and M.S.L.	Dry Bulb.	Wet Bulb.	Change since Yesterday.	Dirac.	Force (0 to 12)		Max.	Min.	Hours.	— — —		
	Ins.	"	"	"	"	Ins.	"	"	"	"	"	"	"	"	"	"	Ins.	
SCANDINAVIA.																		
Haparanda	29.58	19	W	2	0	29.32	-55	32	?	15	5	2	3	0	?	16	0.79	
Hernösand	29.54	34	SW	2	0	29.26	-42	34	33	+12	W	2	0	0	34	22	0.20	
Stockholm	29.64	38	S	2	0	29.46	-34	38	36	+1	WSW	4	0	0	34	30	0.16	
Wisby	29.78	40	S	4	0	29.73	-30	38	36	+3	SW	4	0	0	45	30	0.16	
Karlstad	29.47	37	S	4	0	29.37	-27	36	34	-1	SW	2	0	0	45	30	0.16	
Færder (X'ania Fjord)	29.29	40	SSW	5	0	29.53	-18	39	37	0	WSW	6	0	4	40	37	0.24	
Bodö	29.26	39	ESE	4	0	29.22	-11	36	34	+1	E	4	0	0	39	35	0.20	
Christiansund	29.23	41	SW	3	0	29.32	-03	37	35	-2	WSW	2	0	5	45	36	—	
Skudenesnaes	29.41	40	S	6	0	29.34	-05	39	38	-4	SSE	2	0	5	43	37	—	
BRITISH ISLANDS.																		
Sumburgh Head	29.22	41	W	3	0	28.21	+12	37	37	-4	SE	7	0	7	0.5	43	37	0.06
Stornoway	29.26	38	WSW	3	0	28.46	-40	37	36	+2	SE	5	0	5	0.5	46	34	0.06
Malin Head	29.27	38	SW	6	0	29.15	-53	40	40	+4	WSW	9	0	7	0.0	42	35	0.30
Blacksod Pt.	29.23	42	SE	5	0	29.43	-22	40	38	+2	WSW	6	0	5	0.0	43	34	0.53
Valencia	29.12	45	SE	8	0	29.35	-22	45	41	+3	WSW	7	0	6	0.0	47	40	0.53
Roche's Point	29.38	47	S	7	0	29.37	-21	43	40	+5	WSW	4	0	5	0.0	52	40	0.42
Parsonstown	29.40	42	SE	4	0	29.31	-26	41	38	+7	W	4	0	0	0	50	38	0.36
Donaghadee	29.58	42	SW	2	0	28.58	-70	40	40	+4	WSW	9	0	7	0	32	40	0.80
Liverpool Obsy.	29.72	41	WSW	4	0	29.05	-42	46	40	+7	WSW	10	0	0	0	50	39	0.14
Holyhead	29.62	44	S	6	0	29.09	-37	45	43	+5	W	10	0	0	0	50	38	0.36
Pembroke (St. Ann's)	29.72	46	SSW	7	0	29.26	-23	47	44	+4	WSW	8	0	0	0	49	43	0.42
SCOTLAND.																		
Scilly (St. Mary's)	29.60	49	S	8	0	29.54	-16	49	47	+3	SW	4	0	7	0.0	51	42	0.28
Jersey (St. Aubert)	30.04	48	SSW	4	0	29.64	-20	50	49	+4	SW	4	0	0	0	50	42	0.04
Portland Bill	29.93	46	SW	5	0	29.85	-14	49	47	+4	WSW	6	0	0	0	50	43	0.09
Dungeness	29.98	46	WSW	6	0	29.89	-09	49	48	+4	SW	9	0	6	0.0	50	43	0.06
ENGLAND.																		
Wick	29.31	38	W	4	0	28.46	-54	42	42	-4	S	6	0	7	0.0	44	34	0.15
Nairn	29.36	38	SW	1	0	28.39	-67	40	39	+4	E	1	0	1	0	42	32	0.06
Aberdeen	29.47	38	SW	3	0	28.37	-77	43	41	+5	SE	5	0	0	0	45	35	0.23
Leith	29.50	42	WSW	3	0	29.30	-40	45	44	+5	WSW	3	0	0	0	46	36	0.25
North Shields	29.61	41	SW	3	0	28.58	-79	44	41	+4	SW	8	0	2	0	46	38	0.20
IRELAND.																		
Sparn Head	29.76	42	WSW	5	0	29.01	-45	48	46	+7	SW	9	0	0	0	50	41	0.04
Yarmouth	29.84	45	WSW	5	0	29.33	-21	51	47	+5	SW	7	0	0	0	51	39	—
Loughborough	29.84	42	SW	2	0	29.45	-19	48	43	+8	SW	4	0	0	0	50	38	—
Oxford	29.84	42	SW	2	0	29.45	-19	48	43	+8	SW	4	0	0	0	50	38	—
London (Brixton)	29.93	44	WSW	4	0	29.49	-16	50	47	+6	WSW	6	0	0	0	50	41	0.10
SCOTLAND.																		
The Scaw (Skagen)	29.50	40	W	4	0	29.64	-12	37	36	-2	WSW	4	0	1	0	41	36	0.20
Flanö	29.77	39	SSW	6	0	29.63	-12	38	37	-3	SSW	8	0	0	0	43	37	0.16
Cuxhaven	29.76	42	SW	5	0	29.76	-08	38	36	-5	S	4	0	0	0	46	36	0.08
The Helder	29.89	44	SW	5	0	29.45	-19	47	45	-1	SW	8	0	0	0	48	39	0.04
Brussels	29.74	43	SW	5	0	29.74	-09	50	44	+5	SSW	6	0	0	0	50	38	0.04
Berlin	30.02	43	SW	2	0	30.11	+01	36	35	-1	SSW	2	0	0	0	50	34	0.04
Frankfurt	30.21	42	W	2	0	30.09	+04	38	36	-2	SW	2	0	0	0	50	36	0.04
Munich	30.28	44	W	5	0	30.25	+06	36	35	+5	SE	3	0	0	0	50	31	—
FRANCE.																		
C. Gris Nez	30.02	45	SW	6	0	29.57	-16	47	46	+2	SW	7	0	0	0	48	43	—
Brest	29.97	50	S	4	0	29.79	-18	51	50	+5	SW	4	0	0	0	51	37	0.04
Lorient	30.02	50	SSW	6	0	29.73	-20	52	52	+4	SW	6	0	0	0	51	37	0.04
Rochefort	30.21	51	SW	4	0	30.05	-03	52	51	+1	S	4	0	0	0	51	48	0.24
Biarritz	30.30	54	Z	0	0	30.12	-10	58	56	+4	S	4	0	0	0	61	50	—
SPAIN.																		
Corunna	30.19	58	SSW	4	0	30.00	-20	57	54	+4	SSW	6	0	0	0	57	42	—
Lisbon	30.24	55	SW	2	0	30.36	-02	56	53	+3	SSW	4	0	0	0	61	53	—
Azores (P. Delgada)	30.46	61	SW	7	0	30.05	-12	58	54	-1	WSW	6	0	0	0	63	57	0.04
" (Horta)	29.88	60	SW	7	0	30.05	+04	55	49	-6	WSW	4	0	0	0	63	54	0.16

NOTE: The Sunshine for London given in this Table is recorded on the Tower of the Wesleyan Training College, Westminster.
 * Observations for this column not generally received. † Observations received too late for insertion in Charts on next page.

The darker orange indicates the strength of the wind as it passes over the UK and Ireland

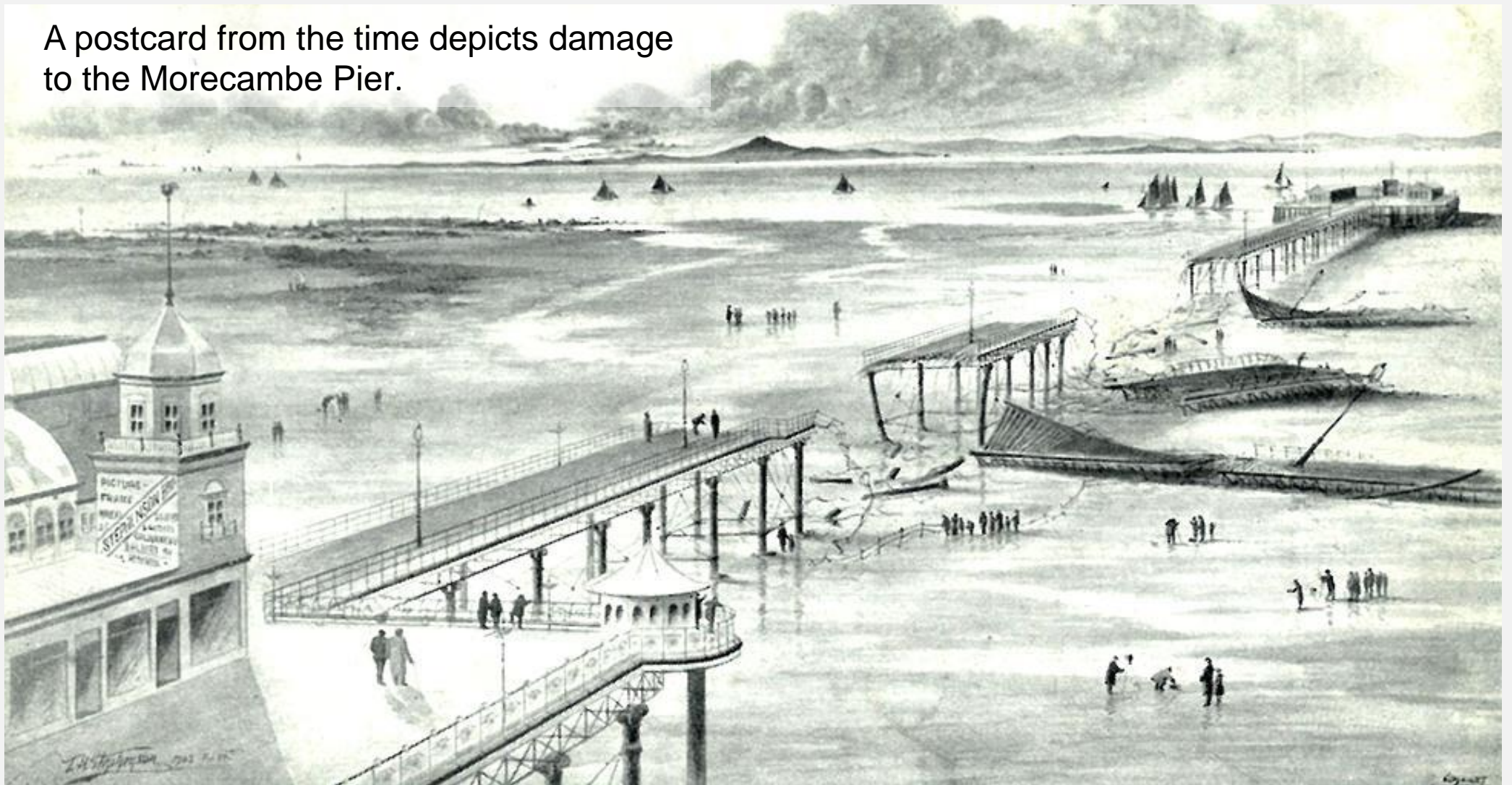


The dots on the maps show where we have observations from before and after the data rescue work - with more data we can accurately reconstruct the storm. It means we can see more isobars in the animation on the right which more accurately shows the strength of the winds.

Large trees blown over in Dublin, as recounted by novelist James Joyce.

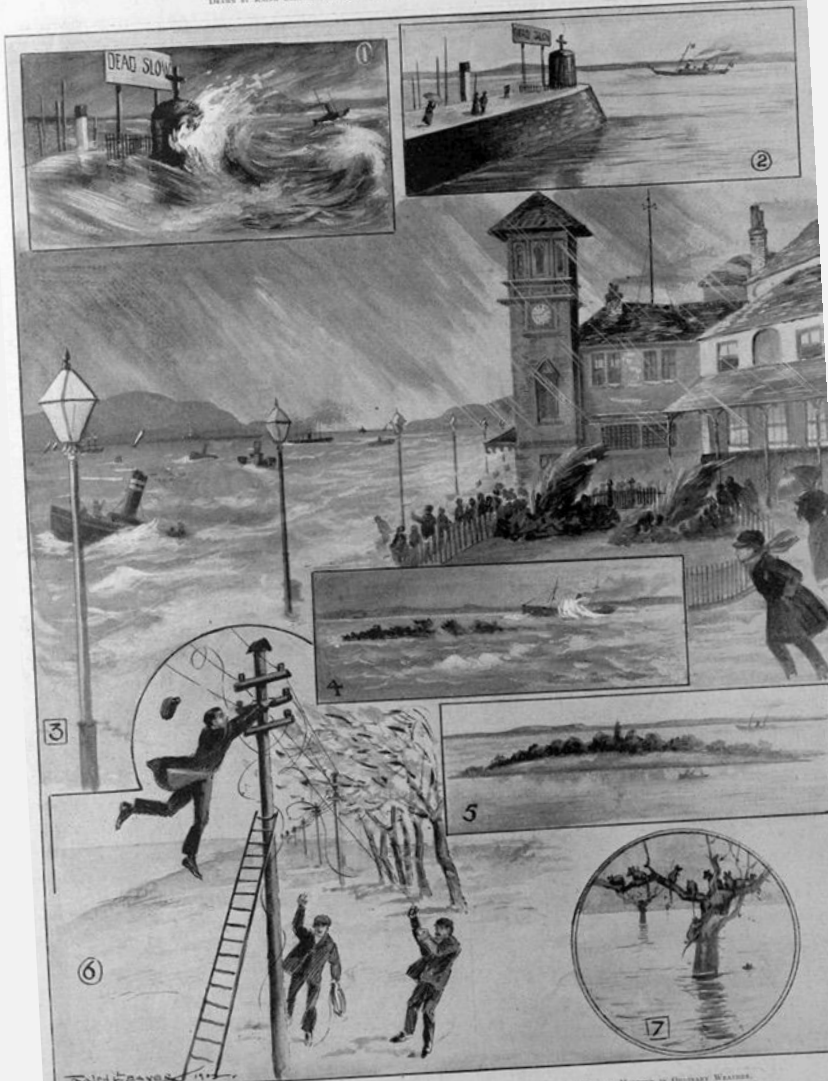


A postcard from the time depicts damage to the Morecambe Pier.



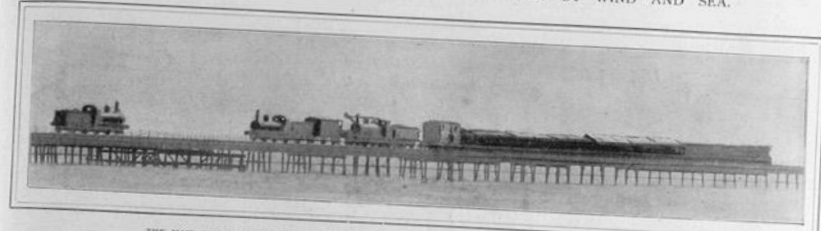


THE GREAT GALE: SCENES OF THE TEMPEST ON THE CLYDE.
Drawn by Ralph Craver from sketches by W. A. Donnelly, our Special Artist on the Clyde.



1. THE WAVES LEAPING OVER THE "DEAD SHIP" MADE AT BOWLING HARBOUR.
 2. THE SCENE AT GREENOCK QUAY, FEBRUARY 26, THE WAVES COMING OVER THE PIER AND BEATING AGAINST THE ANCHORAGE BOLLARDS.
 3. MICHAEL JELAND TRIPPED BY THE PIER.
 4. JOHNSON HARRISON IN CHANGING WEATHER.
 5. MICHAEL JELAND INCHANGING WEATHER BEARING OVER THE BRIDGE OF A CLYDE TRUSS BRIDGE.
 6. RATS TAKING REFUGE IN TREES ON MICHAEL ISLAND.
 7. THE PIER OF BOWLING HARBOUR THE TELEGRAPH WIRE: A WORKMAN BLOWN FROM HIS LADDER BY CLYDEWIND.

THE GREAT GALE: SCENES OF HAVOC WROUGHT BY WIND AND SEA.



THE MAIL TRAIN OVERTURNED BY THE WIND ON THE LEVEN VIADUCT, NEAR ULVERSTON, FEBRUARY 27.



THE DAMAGE DONE TO KILLY PIER, SHOWING THE OVERTURNED KIOSK.



THE WEST END OF PIER, MORECAMBE, AFTER THE STORM OF FEBRUARY 27.



THE WRECK OF THE S.S. "LENWICK" ON GILLYMORE BEACH, FALMOUTH, FEBRUARY 26.



THE WRECK OF THE "DAISY" IN WHITSAND BAY, NEAR FLYMOUTH.



THE RUINS OF THE ROMAN CATHOLIC IRON CHURCH AT GREYSTONES, BLOWN DOWN ON FEBRUARY 26.



THE REMAINS OF ST. ELEANOR'S CHURCH, HOLYHEAD, DESTROYED BY THE GALE ON FEBRUARY 26.

The train on the Furness Railway had reached the middle of the Leven Viaduct when a furious gust upset it. Five persons were injured and their iron trunks were scattered. At the latter place two hundred yards of the pier extension were swept away. The S.S. "Lenwick," of Newcastle, dismasted at Falmouth, was blown for 200 yards on to the beach. The crew, comprising eight hundred persons, it withstood the great gale of November 1901, but had now's longest reduced to its crew in less than half an hour. In the remains of St. Eleanor's church could be that illustrated were seen by the water. Another church destroyed by the storm was St. John's, Holyhead. The building, which had just been erected, was lifted bodily from its foundations and completely wrecked. It could hold three hundred and fifty persons.

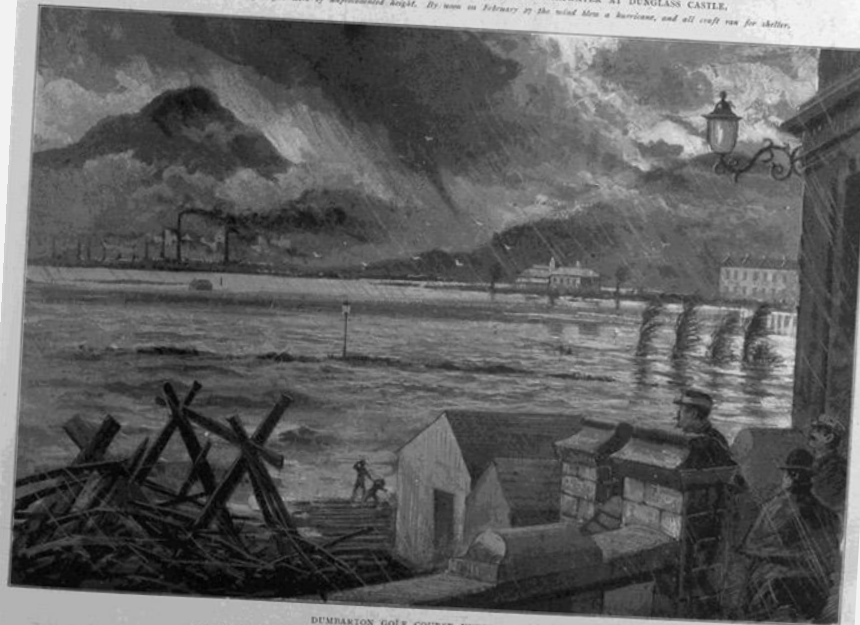
THE ILLUSTRATED LONDON NEWS, MARCH 7, 1903.—355

THE GREAT GALE: SCENES OF HAVOC ON THE CLYDE.

Drawn by C. DE LACY FROD SKETCHES BY W. A. DONNIS, OUR SPECIAL ARTIST ON THE CLYDE.

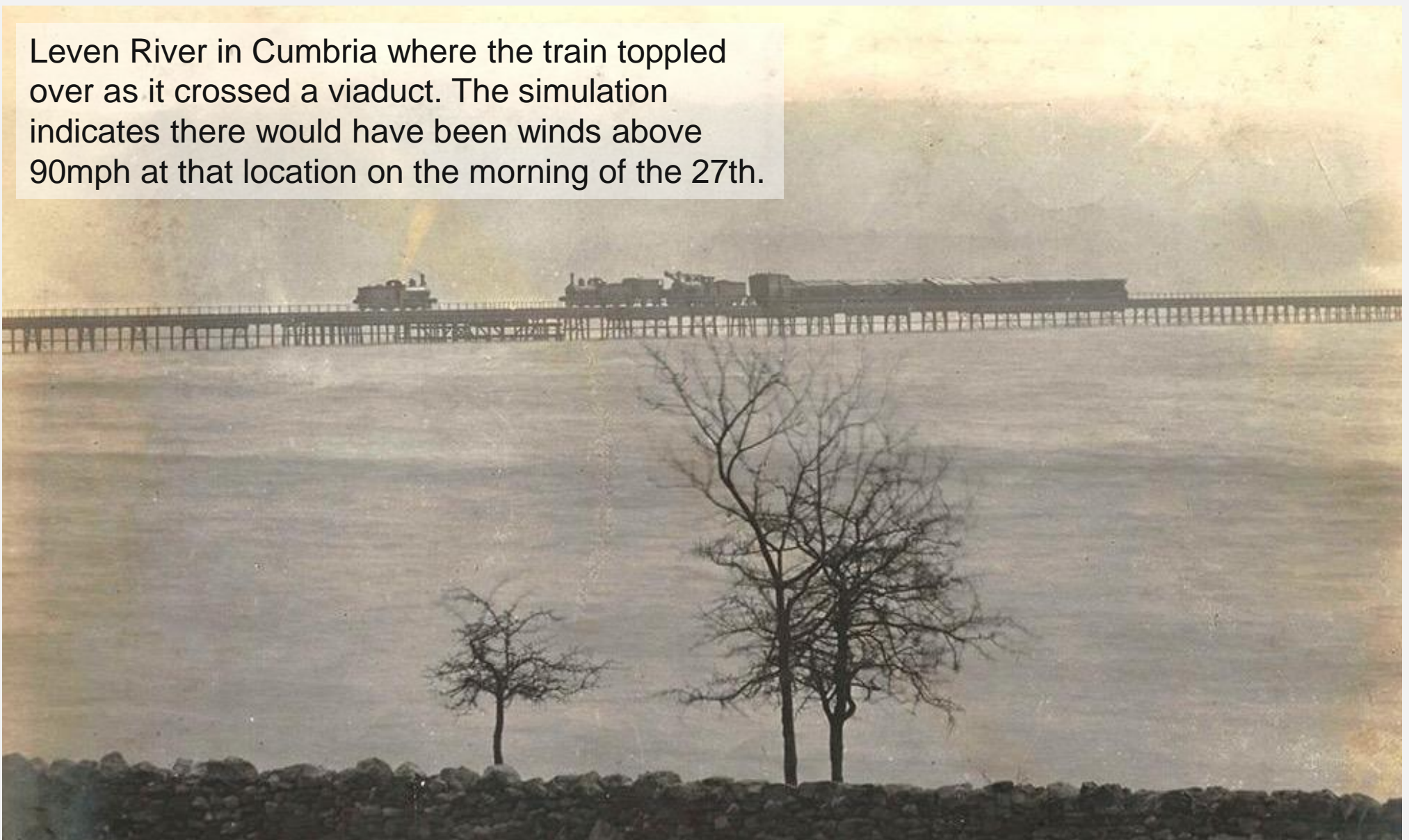


THE WAVES LASHING OVER THE NORTH BRITISH RAILWAY BREAKWATER AT DUNGLASS CASTLE.
The waves on the Firth of Clyde were of unprecedented height. In noon on February 20 the wind blew a hurricane, and all craft ran for shelter.



DUMBARTON GOLF COURSE UNDER WATER.
From the heights of Dumbarton there reached a cascade two hundred feet high, with grandly picturesque effect.

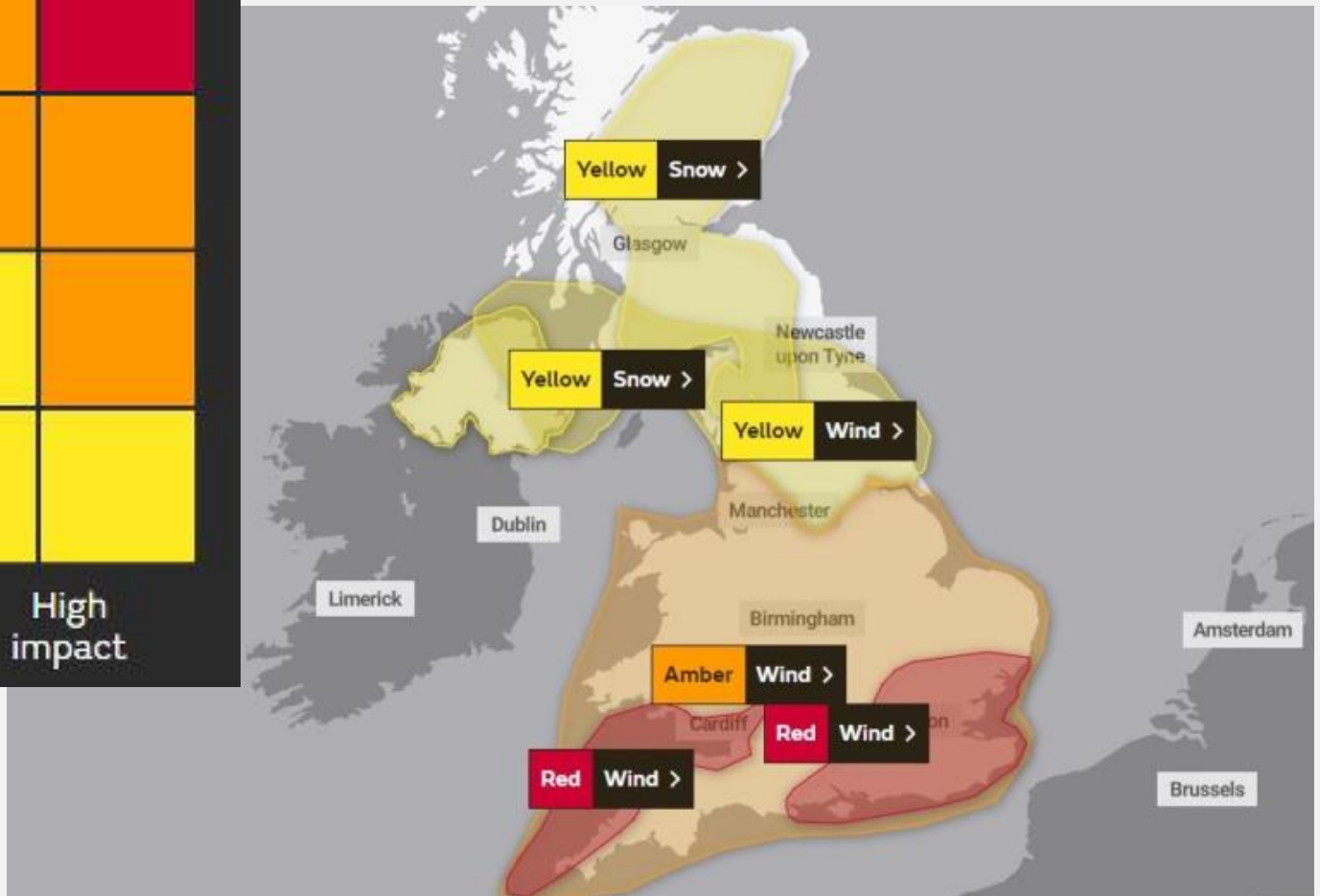
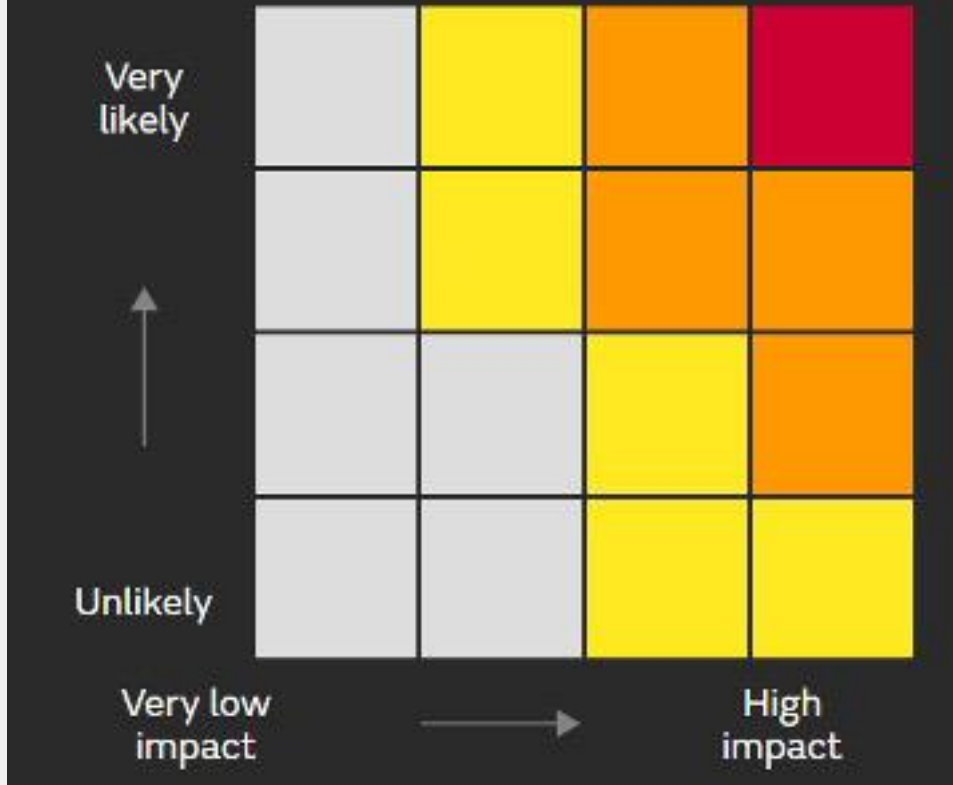
Leven River in Cumbria where the train toppled over as it crossed a viaduct. The simulation indicates there would have been winds above 90mph at that location on the morning of the 27th.





Modern day

Warning impact matrix



<https://www.youtube.com/watch?v=-ioFGbugRVM>



A dramatic sky with dark, heavy clouds and a bright orange and red glow on the right side, suggesting a storm or sunset.

Weather Warning Task

Storm Isha and Storm Jocelyn 21-24th January 2024

⚠ Amber warning
✕

18:00
UTC
09:00

Tomorrow
Mon 22

Storm Isha will bring a spell of very strong winds during Sunday evening into Monday. Disruption to travel and utilities is likely.

What to Expect

- There is a good chance that power cuts may occur, with the potential to affect other services, such as mobile phone coverage
- Probably some damage to buildings, such as tiles blown from roofs
- Longer journey times and cancellations likely, as road, rail, air and ferry services may be affected
- Some roads and bridges likely to close
- Injuries and danger to life is likely from large waves and beach material being thrown onto coastal roads, sea fronts and properties

What should I do?

5 tips for staying safe in strong wind >

Travelling in storms, rain and strong wind >

Driving safely in winter weather >

Further Details >

Sat 20 Jan
⚠

Sun 21 Jan
⚠

Mon 22 Jan
⚠

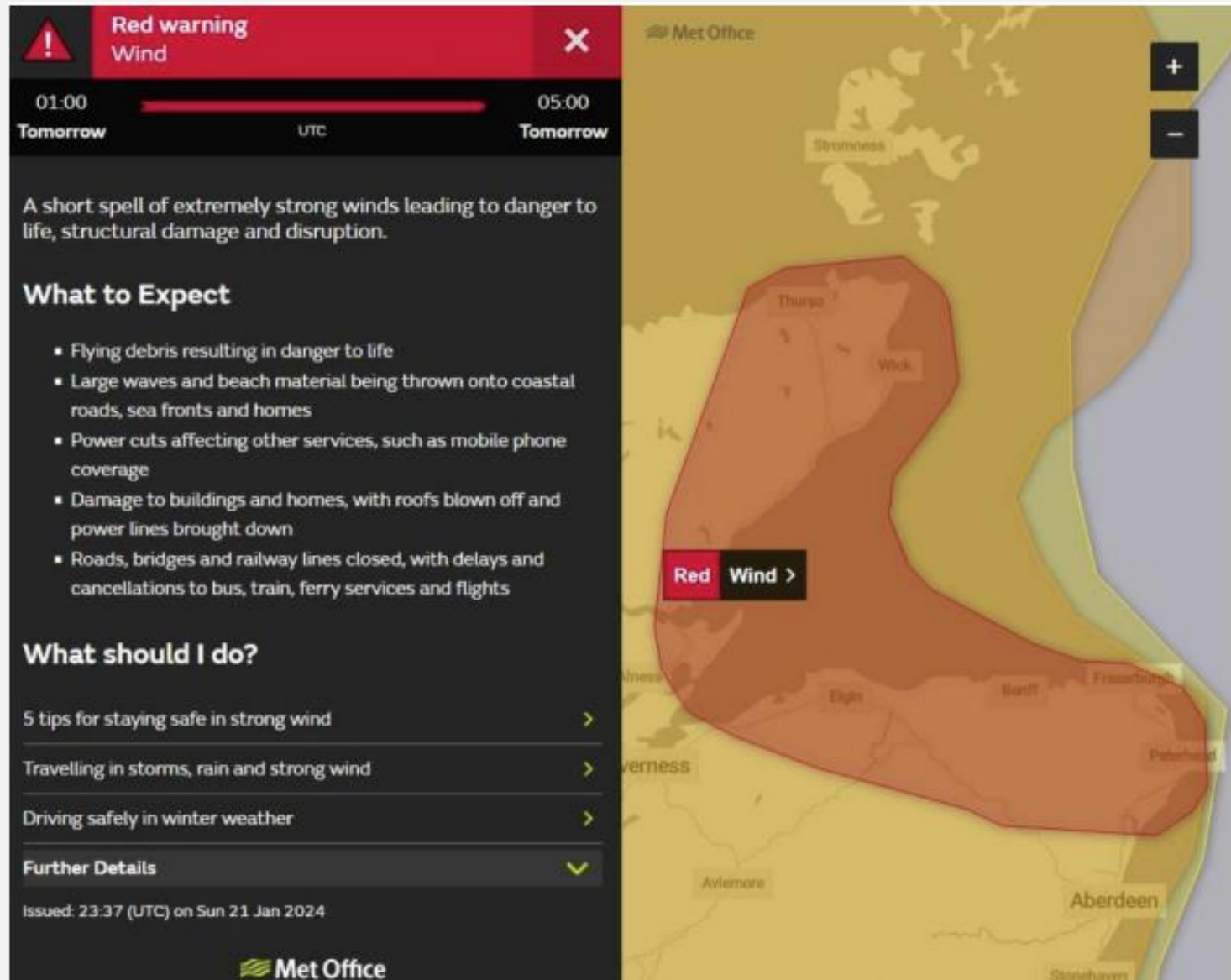
Tue 23 Jan
⚠

Wed 24 Jan
⚠

Thu 25 Jan
No warnings

Fri 26 Jan
No warnings

Red warning focus



Red warning
Wind

01:00 ————— 05:00
Tomorrow UTC Tomorrow

A short spell of extremely strong winds leading to danger to life, structural damage and disruption.

What to Expect

- Flying debris resulting in danger to life
- Large waves and beach material being thrown onto coastal roads, sea fronts and homes
- Power cuts affecting other services, such as mobile phone coverage
- Damage to buildings and homes, with roofs blown off and power lines brought down
- Roads, bridges and railway lines closed, with delays and cancellations to bus, train, ferry services and flights

What should I do?

5 tips for staying safe in strong wind >

Travelling in storms, rain and strong wind >

Driving safely in winter weather >

Further Details ✓

Issued: 23:37 (UTC) on Sun 21 Jan 2024

Met Office

Sun 16 Feb	Mon 17 Feb	Tue 18 Feb	Wed 19 Feb	Thu 20 Feb	Fri 21 Feb	Sat 22 Feb
		No warnings	No warnings	No warnings	No warnings	No warnings

Red warning
Rain

06:10 11:00
Today UTC Today

Storm Dennis is expected to bring further heavy rain for a time on Sunday morning, increasing the likelihood of high impacts.

What to expect

- Danger to life from fast flowing or deep floodwater
- Extensive flooding to homes and businesses is likely
- Collapsed or damaged buildings or bridges
- Road closures and bus and train service delays and cancellations
- Dangerous driving conditions because of spray and flooded roads
- Loss of power and other essential services, such as gas, water, mobile phone service
- Communities could be completely cut off by floodwater, perhaps for several days