

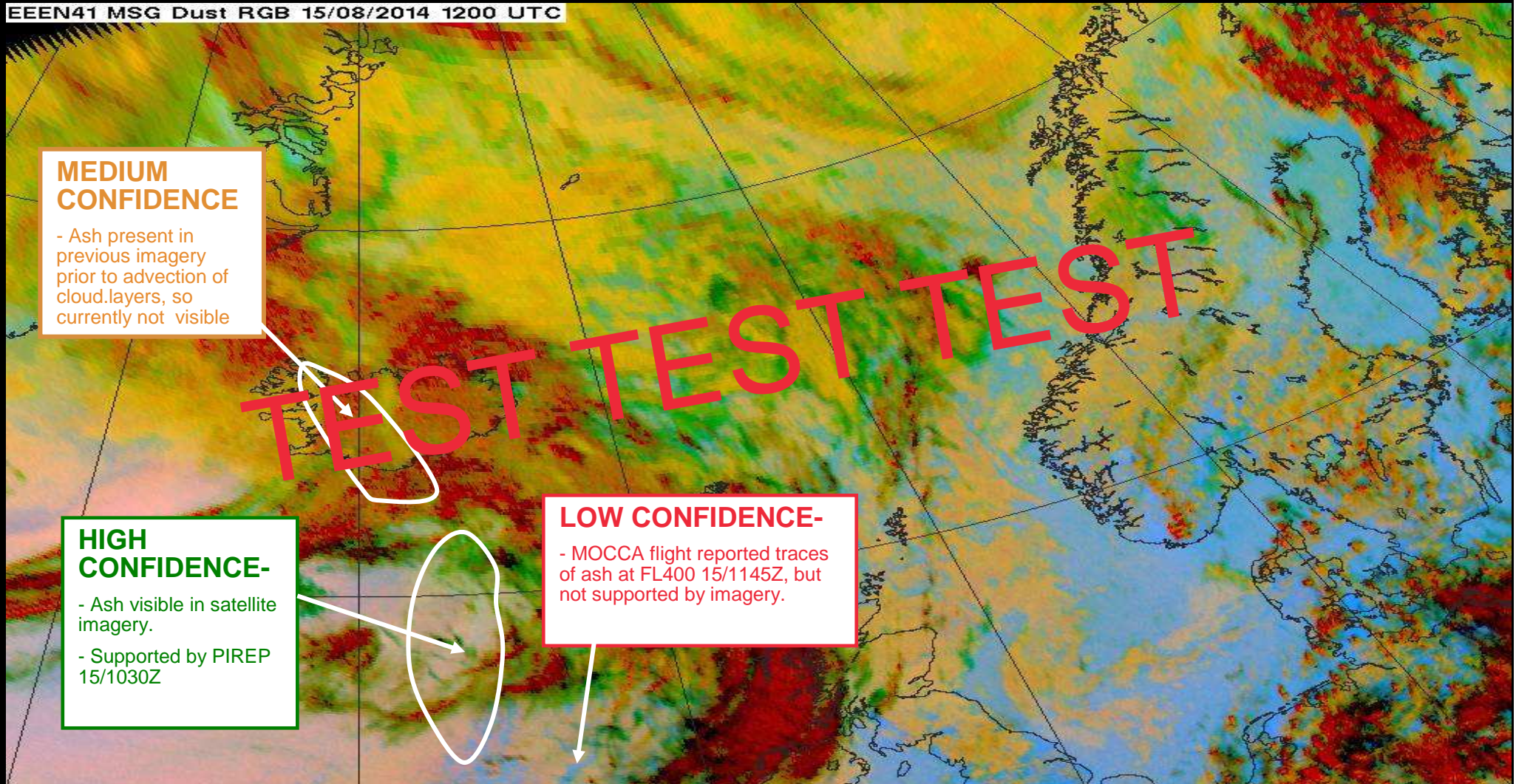


Met Office

Volcanic Ash – T+0 annotated satellite image

Issued 1300 UTC on Fri 15 Aug 2014

EEEN41 MSG Dust RGB 15/08/2014 1200 UTC



MEDIUM CONFIDENCE

- Ash present in previous imagery prior to advection of cloud layers, so currently not visible

HIGH CONFIDENCE-

- Ash visible in satellite imagery.
- Supported by PIREP 15/1030Z

LOW CONFIDENCE-

- MOCCA flight reported traces of ash at FL400 15/1145Z, but not supported by imagery.