

Hazard Manager User guide

Weather warnings



How will this guide help me?

This guide shows you how to view the details of weather warnings on Hazard Manager.

Contents

- | | |
|---|----------|
| 1. How to select and view weather warnings | 3 |
| 2. Viewing warnings and weather layers information | 8 |

1. How to select and view weather warnings

If a warning has been issued, a yellow, amber, or red warning triangle will appear as shown in figure 1. To view any issued warnings simply click on the warning triangle or select 'Weather & Warnings' from the 'My Products' menu as shown below.

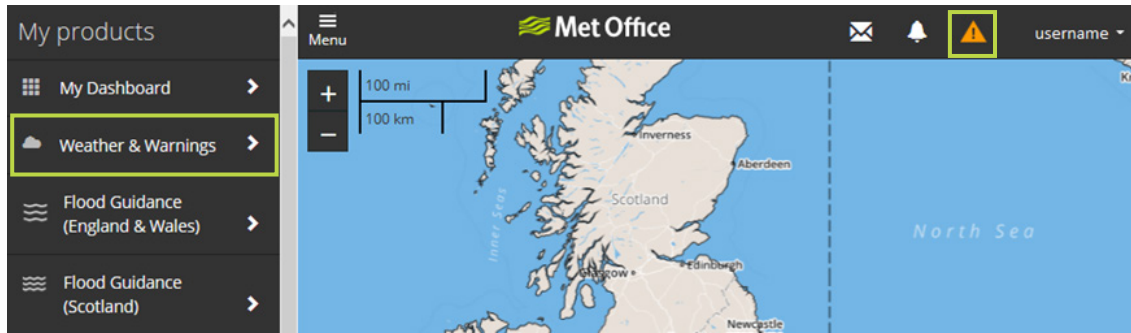


Figure 1. The 'Weather & Warnings' option displayed in the 'My products' menu and also a warning triangle displayed above the map.

You can also access warnings through 'My Dashboard', by clicking on a warnings item in the Activity feed or clicking the link in the seven day 'Weather Warnings' overview box as shown below.

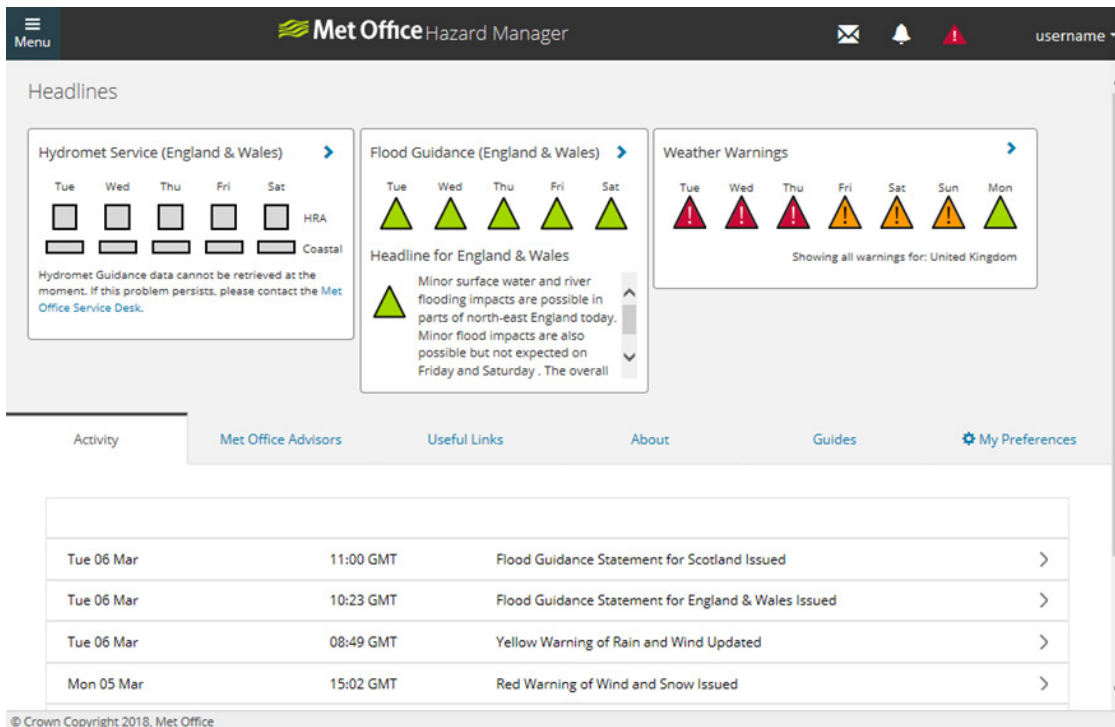


Figure 2. 'My Dashboard' view.

The warnings will then be displayed as shown in figure 3. The image shows any warnings that have been issued for the next seven days. The day of the week can be selected by either clicking on the small UK maps or using the timescale at the bottom of the screen. In the image below, Tuesday 6 March has been selected and hence warnings on the base map are those that apply to this date. The warnings are also listed in the panel as shown.

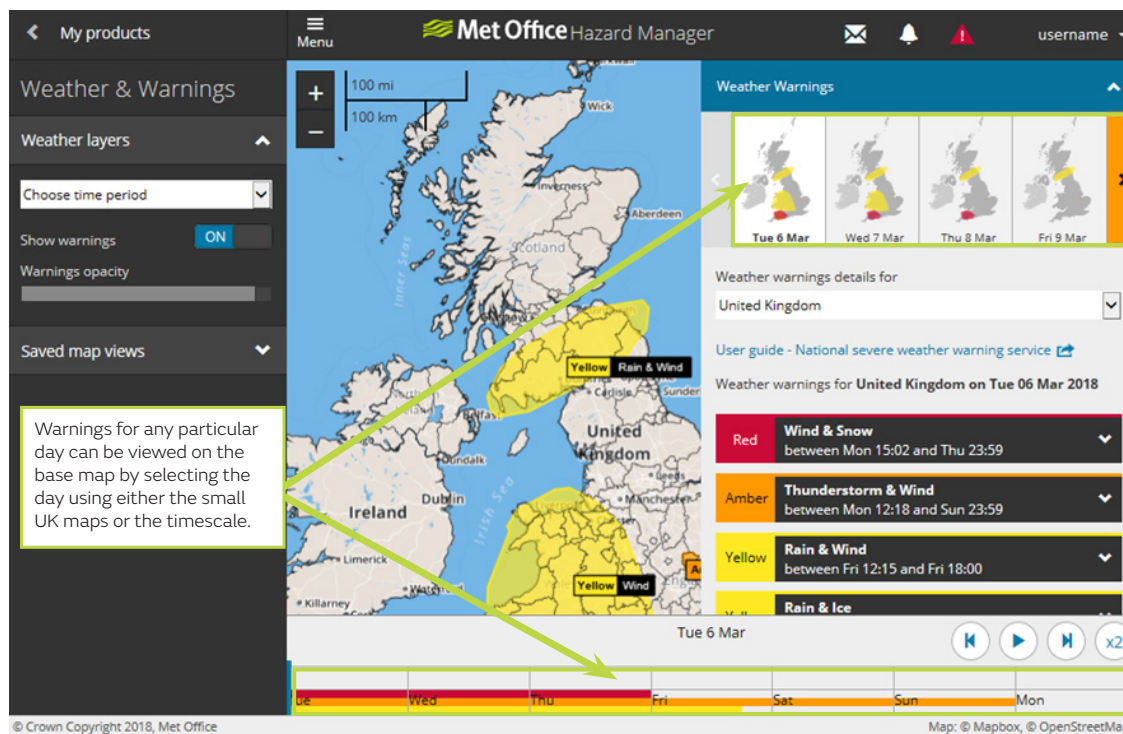


Figure 3. Warnings displayed for Tuesday 6 March.

Warnings for any particular day can be viewed on the base map by selecting the day using either the small UK maps or the timescale.

Four days of small UK maps are shown at any one time, to see days out of view, use the navigation buttons to the left and right. These buttons will be coloured to indicate:

- Where there are no warnings on day's currently off-screen (indicated by dark grey)
- Where you have reached either end of the seven day period (indicated by light grey)
- Where there are warnings on days currently off-screen. This will show the highest level of warning issued which is valid on the off-screen days, so either Yellow, Amber or Red.

There are also warning indicators on the timeline at the bottom of the screen. These show at what times warnings are valid and the impact level (colour).

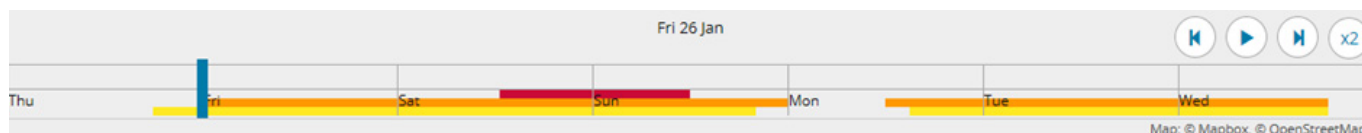


Figure 4. Timescale and animation controls

By selecting a warning from the list in the panel, or selecting the warning area on the map, all the information relating to the warning such as the text, validity time, matrix etc. can be viewed. In the example below the user has selected a yellow warning of Rain & Wind to view the detail of the warning.

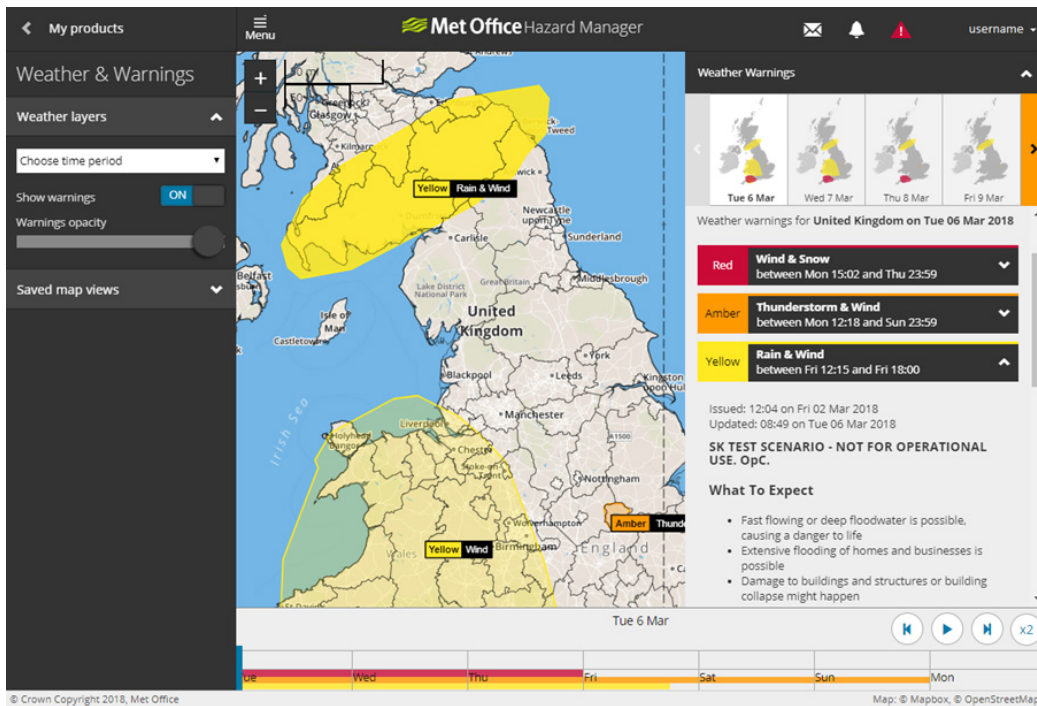


Figure 5. Yellow warning of Rain & Wind selected

2. Viewing warnings and weather layers information

It's possible to combine the warning information with information from the weather layers. For example the forecast rainfall layer can be combined with the warning layer enabling you to identify when the heaviest rain may affect your area. The examples below show a rainfall warning combined with forecast rainfall.

Ensure the 'Show warnings' option is toggled on then select the weather layer you want.

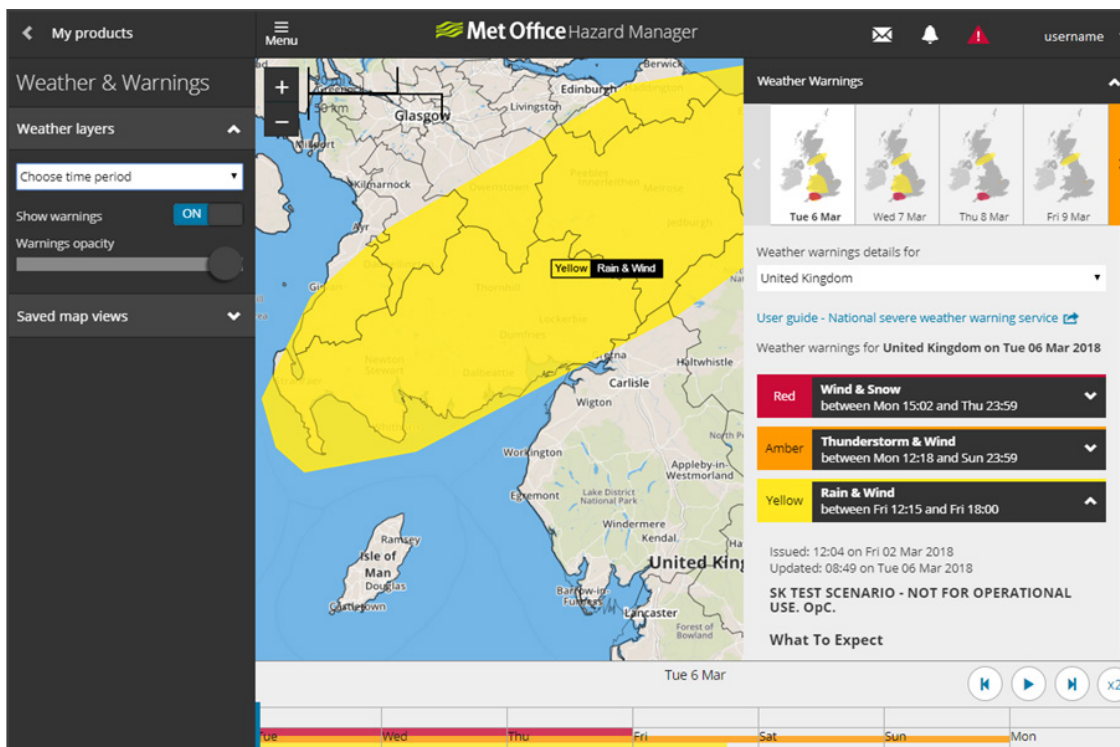


Figure 6. Rain and Wind warning selected for Tuesday

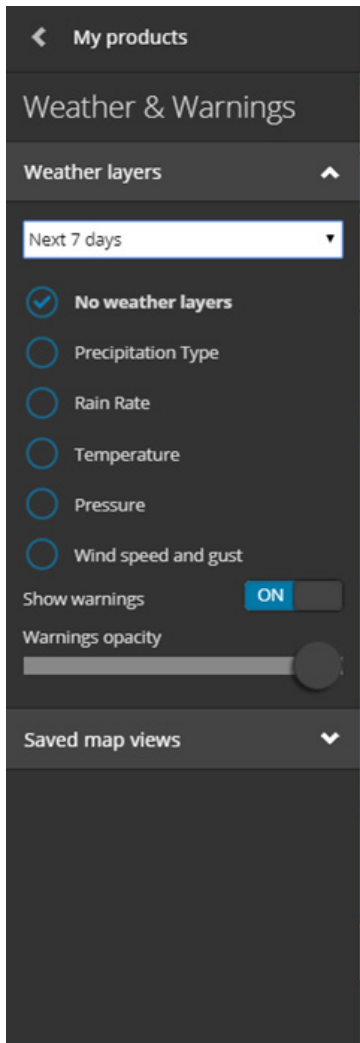


Figure 7. Weather Layers and “Next seven days” selected.

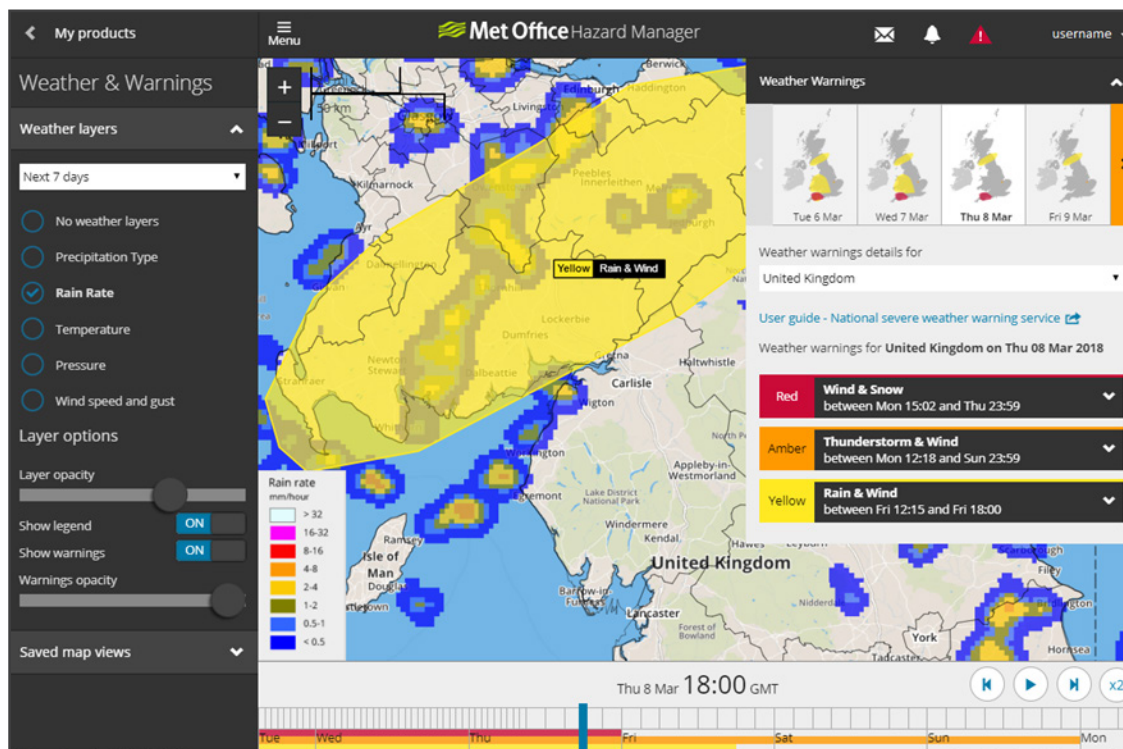


Figure 8. Rain rate has been selected along with a time within the validity period of the warning.

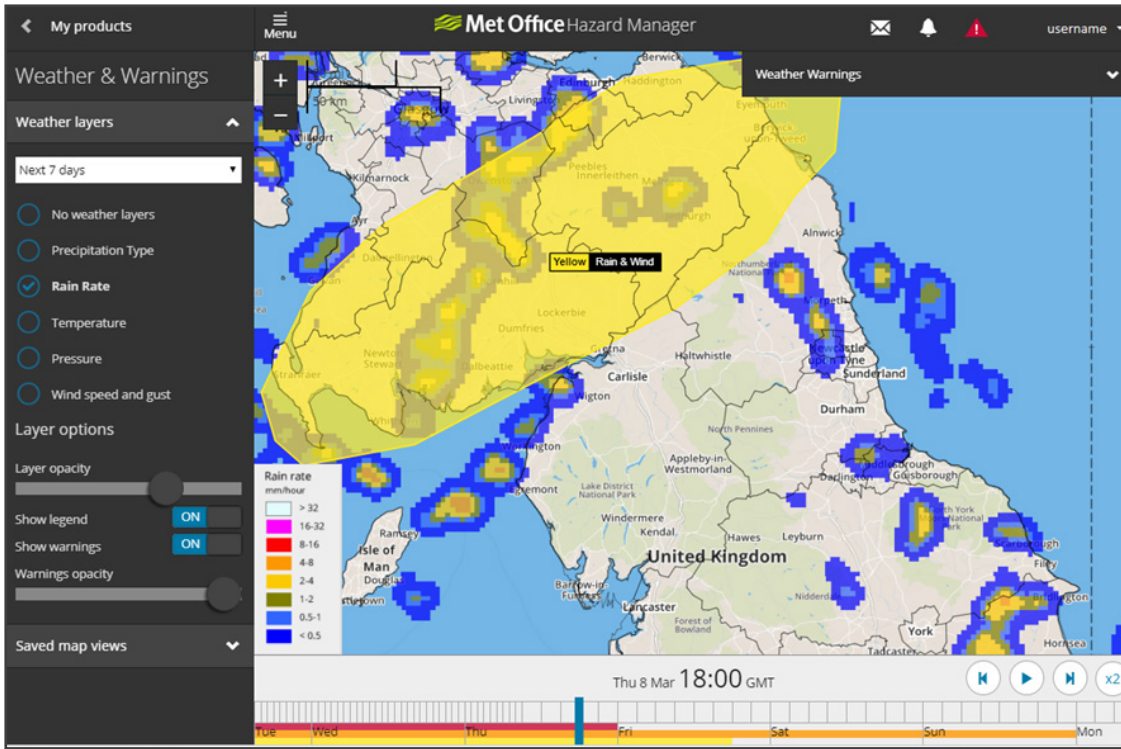


Figure 9. The warning text has been hidden using the arrow in the top right corner of the warning panel.

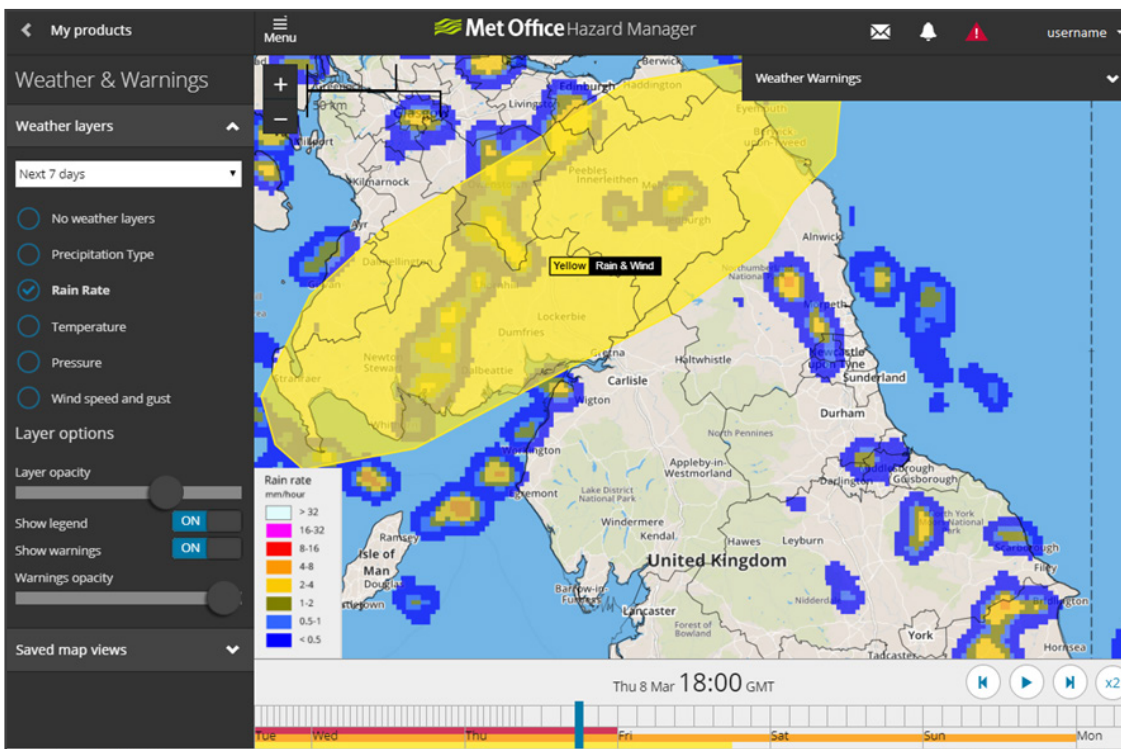


Figure 10. The warning layer can also be toggled on/off using the on/off option alongside "show warnings".