



Weather chart for 1200 UTC on 31 January 2008

### Daily weather extremes

**Highest Maximum Temperature:**  
10.8 °C at St Mary's (Isles of Scilly)

**Lowest Maximum Temperature:**  
3.3 °C at Eskdalemuir (Dumfries and Galloway)

**Lowest Minimum Temperature:**  
-0.7 °C at Eskdalemuir (Dumfries and Galloway)

**Lowest Grass Minimum Temperature:**  
-3.4 °C at Herstmonceux (East Sussex)

**Most Rainfall:**  
20.0 mm at Loch Glascarnoch (Ross and Cromarty)

**Most Sunshine:**  
1.4 hours at Brize Norton (Oxfordshire)

### General summary

Central and south-eastern parts of England were dry at midnight but there were outbreaks of occasionally heavy (and locally thundery) rain elsewhere and these had spread across most of the aforementioned areas by dawn. The rain was showery in nature across the far south of both England and Wales, and snow was reported over Highland and Grampian.

A band of locally heavy rain, extending from north Wales to Yorkshire at dawn, moved southeast during the morning to reach from Hampshire to Norfolk by midday. To the north there were frequent showers with an increasingly wintry mix, and some sunny intervals. The rain continued its south-eastward migration, clearing Kent around 1500 UTC. Showers affected many parts of the United Kingdom during the afternoon, but more persistent precipitation developed across parts of Scotland and Northern Ireland. The evening saw little change. Strong to gale force north-westerly winds affected much of the country.

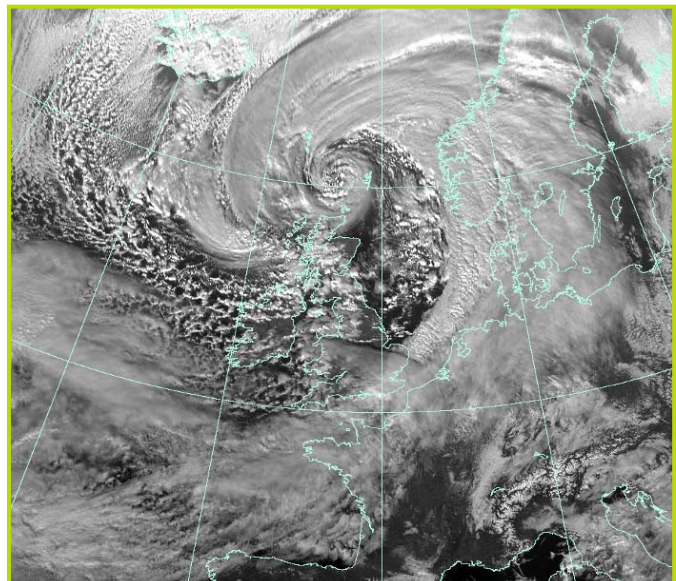
Temperatures in the north were generally in the normal or rather cold category, but they were in the normal or mild category in the south.

### Daily weather statistics

	London	Edinburgh	Cardiff	Belfast
Maximum Temperature /°C:	9.7	5.3	9.2	5.4
Minimum Temperature /°C:	4.8	1.4	3.4	1.4
Rainfall Amount /mm:	2.8	8.2	3.0	1.2
Sunshine Amount /hours:	0.0	1.4	2.0	4.1

### Highest gust speeds

	Gust speed	
	(knots)	(mph)
Great Dunn Fell (Cumbria)	90	104
Needles Old Battery (Isle of Wight)	78	90
Aberdaron (Gwynedd)	74	85
Machrihanish (Argyll and Bute)	73	84
Orlock Head (Co. Down)	71	82



Visible satellite imagery for 1315 UTC on 31 January 2008