

Weather chart for 1200 UTC on 24 May 1989

Daily weather extremes

Highest Maximum Temperature:
29.4 °C at London Weather Centre (Greater London)

Lowest Maximum Temperature:
9.1 °C at Aviemore (Highland) and Glenlivet (Moray)

Lowest Minimum Temperature:
3.9 °C at Stornoway Airport (Isle of Lewis)

Lowest Grass Minimum Temperature:
1.1 °C at Glenlee (Dumfries and Galloway)

Most Rainfall:
60.2 mm at South Farnborough (Hampshire)

Most Sunshine:
15.2 hours at Saunton Sands (Devon)

General summary

England and Wales and southern Scotland had a mostly dry, warm and humid night. A few mist or fog patches formed and one or two thundery showers drifted north across Hampshire, Dorset and Oxfordshire. Over northwest Scotland and Northern Ireland cooler weather made slow progress southeast.

During the day that cooler weather in the northwest became slow moving with rather persistent rain in parts of northeast Scotland. As a result, England, Wales and southern Scotland remained very warm and humid. There was a lot of sunshine during the day especially around all the coastal regions. One or two isolated thunderstorms affected the Midlands, central southern England and North Wales during the morning.

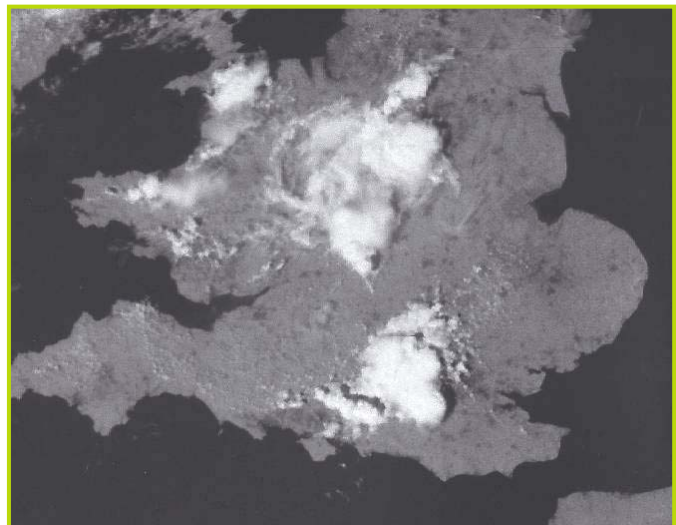
In the afternoon thunderstorms became more widespread with heavy rain and flooding across central southern England, the Midlands and parts of northern England. Later thunderstorms were also reported in southern Scotland too. Some places had well over an inch of rain under the heaviest storms.

During the evening the thundery activity became more confined to the East Midlands and northeast England.

Much of England and Wales, away from the north and west, had a hot day although by early afternoon cooler air had reached the Midlands and spread to all other areas during the evening.

Daily weather statistics

	London	Edinburgh	Cardiff	Belfast
Maximum Temperature /°C:	29.4	12.7	27.3	14.8
Minimum Temperature /°C:	16.7	9.1	13.8	8.9
Rainfall Amount /mm:	0.3	6.5	2.3	0.0
Sunshine Amount /hours:	7.0	0.0	9.5	8.9



Visible satellite image for 1244 UTC on 24 May 1989