



NWR User Guide

Contents

Contents.....	2
Getting started.....	3
Superuser account privileges.....	3
Standard user account.....	4
NWR for mobile.....	5
Home screen overview.....	6
Superuser functionality.....	8
Manage Airports page.....	8
Sorting the Airport List.....	9
Manage Thresholds page.....	10
Highlighting colour coding:.....	11
Standard User functionality.....	12
Reports Page.....	12
General Information.....	14
Weather Layers.....	14
The Weather Layer Picker.....	14

Getting started

Network Weather Resilience (NWR) is a situational awareness web-portal which combines weather data with aviation weather reports and forecast products.

All users have access to a map, weather layers, forecast (report) products, and will be able to set up a list of airports to monitor TAF/METARs. TAFs/METARs can be viewed in summary Red Amber Green (RAG) status view on a map, in full RAG status detail view and in a watch list panel (per user, per login session).

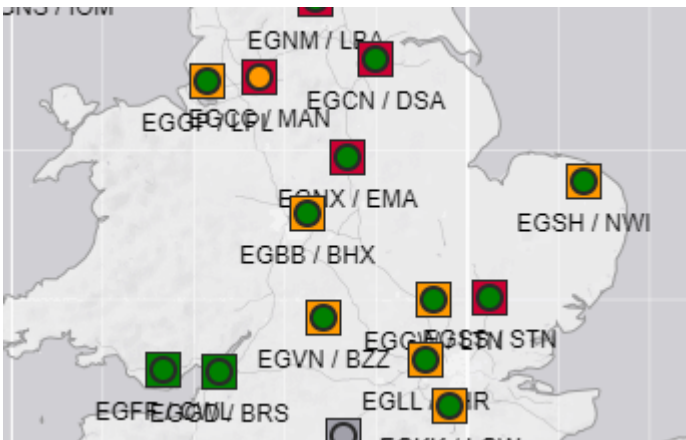
Read the sections below for some more information about NWR Superusers and Standard Users.

Superuser account privileges

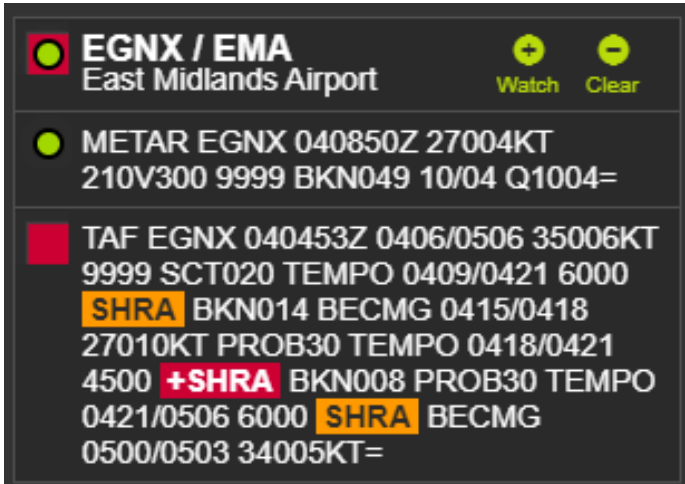
A Superuser will set up NWR to tailor the application to an organisation's needs.

They have administration rights to:

1. Set up the Airport List which populates the NWR Map. The Superuser will list the airports which are most important to your organisation's network operations and for monitoring TAF/METAR.



2. Set thresholds to apply a Red Amber Green status appropriate for their organisation's decision making. The RAG status will apply to the METAR/SPECI/TAF reports and weather variables exceeding threshold limits will be highlighted as Amber or Red accordingly.



EGNX / EMA
East Midlands Airport

Watch Clear

METAR EGNX 040850Z 27004KT
210V300 9999 BKN049 10/04 Q1004=

TAF EGNX 040453Z 0406/0506 35006KT
9999 SCT020 TEMPO 0409/0421 6000
SHRA BKN014 BECMG 0415/0418
27010KT PROB30 TEMPO 0418/0421
4500 **+SHRA** BKN008 PROB30 TEMPO
0421/0506 6000 **SHRA** BECMG
0500/0503 34005KT=

NOTE: an organisation can allocate up to two Superusers, a primary Superuser and an optional back-up Superuser.

Standard user account

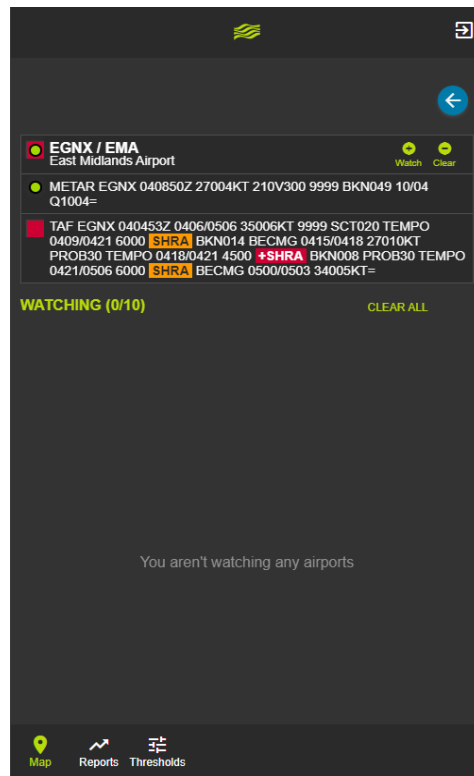
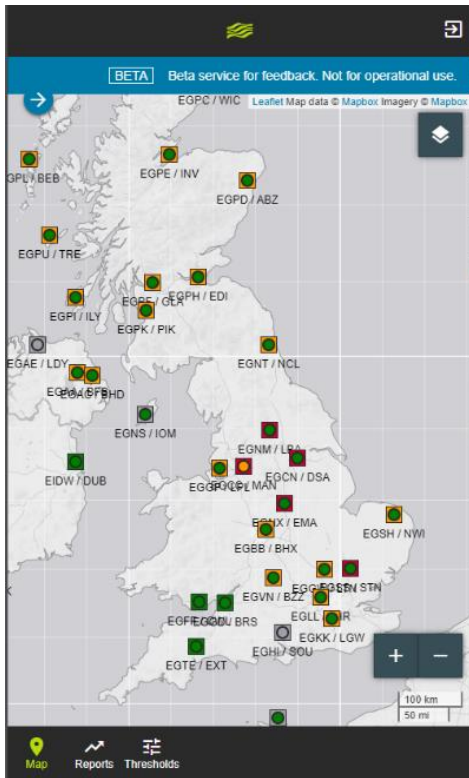
Standard users will not be able to modify the threshold settings using the Manage Thresholds page, but will have access to a read-only version of this page so that they can see what their organisation's threshold settings are.

Standard users will not have access to the Manage Airport List – but can see the airports on the map view.

NWR for mobile

The mobile and tablet version of NWR does not support the Superuser features above as they are difficult to use on a small device.

All standard user features are available.



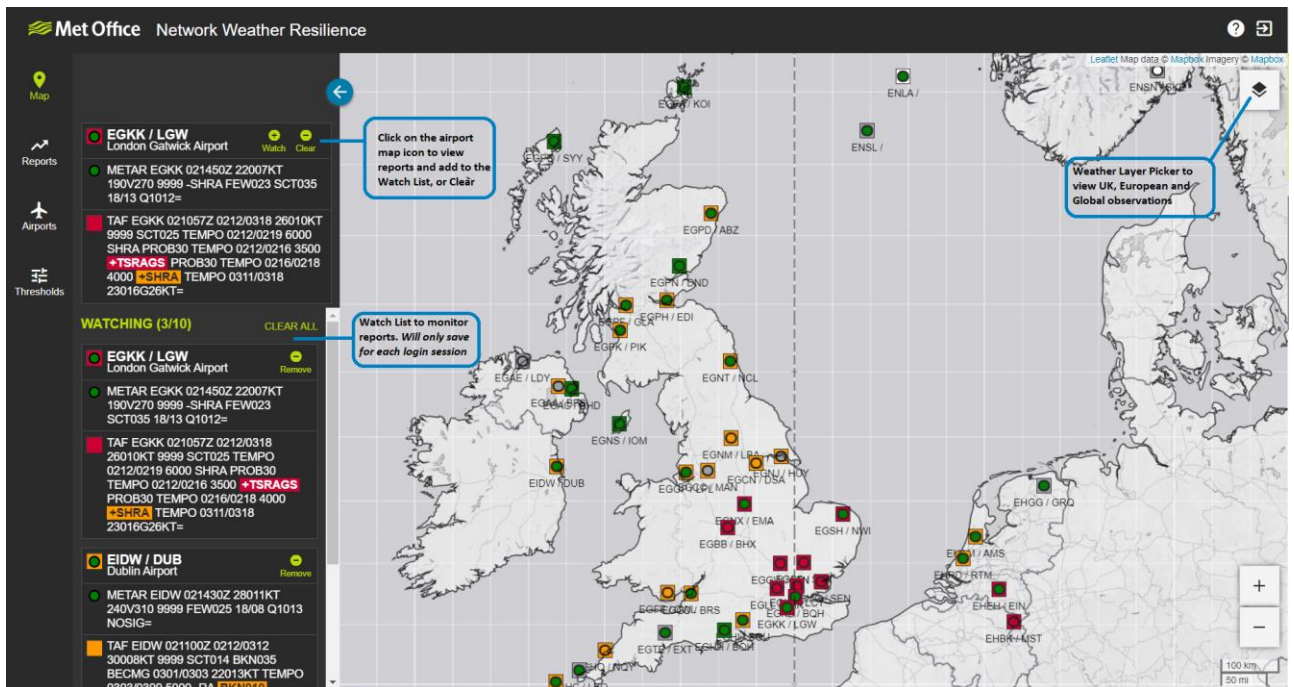
Home screen overview

NWR is a web portal which consists of the following:

- An interactive map which allows you pan, zoom and click-to-view airport weather reports (METAR, SPECI, TAF).
- Create a “Watch List” for monitoring weather reports at important locations, to be set up upon login and unique to the user.

Note: Watch Lists are not stored permanently and will need to be set up for each login session.

- Apply weather observation layers covering UK, Europe and large parts of the globe.
- The “Watch List” Panel can be hidden for a broader view of the map and weather layers.
- On the left, there are administration pages where a Superuser can set which airports to view on the map and threshold settings for Red Amber Green highlighting (indicating weather risks).



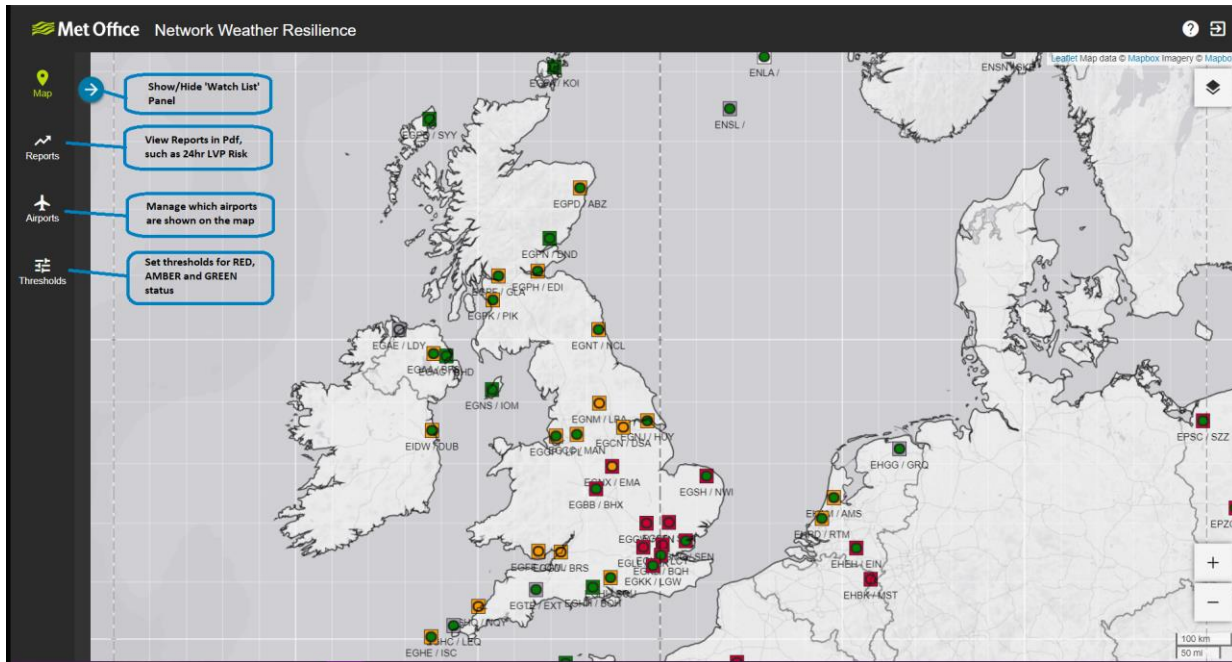
Met Office Network Weather Resilience

WATCHING (3/10) CLEAR ALL

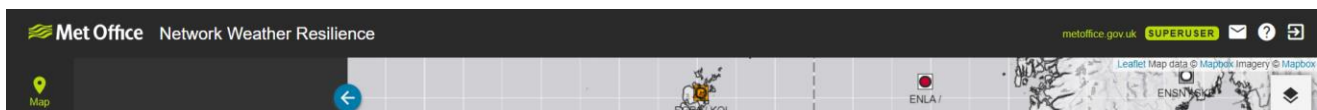
- EGKK / LGW** London Gatwick Airport Watch Clear
 - METAR EGKK 021450Z 22007KT 190V270 9999 -SHRA FEW023 SCT035 18/13 Q1012=
 - TAF EGKK 021057Z 0212/0318 26010KT 9999 SCT025 TEMPO 0212/0219 6000 SHRA PROB30 TEMPO 0212/0216 3500 +TSRAGS PROB30 TEMPO 0216/0218 4000 -SHRA TEMPO 0311/0318 23016G26KT=
- EIDW / DUB** Dublin Airport Remove
 - METAR EIDW 021430Z 28011KT 240V310 9999 FEW025 18/08 Q1013 NOSIG=
 - TAF EIDW 021100Z 0212/0312 30008KT 9999 SCT014 BKN035 BECMG 0301/0303 22013KT TEMPO 0303/0309 5000 -RA FEW010

Callouts:

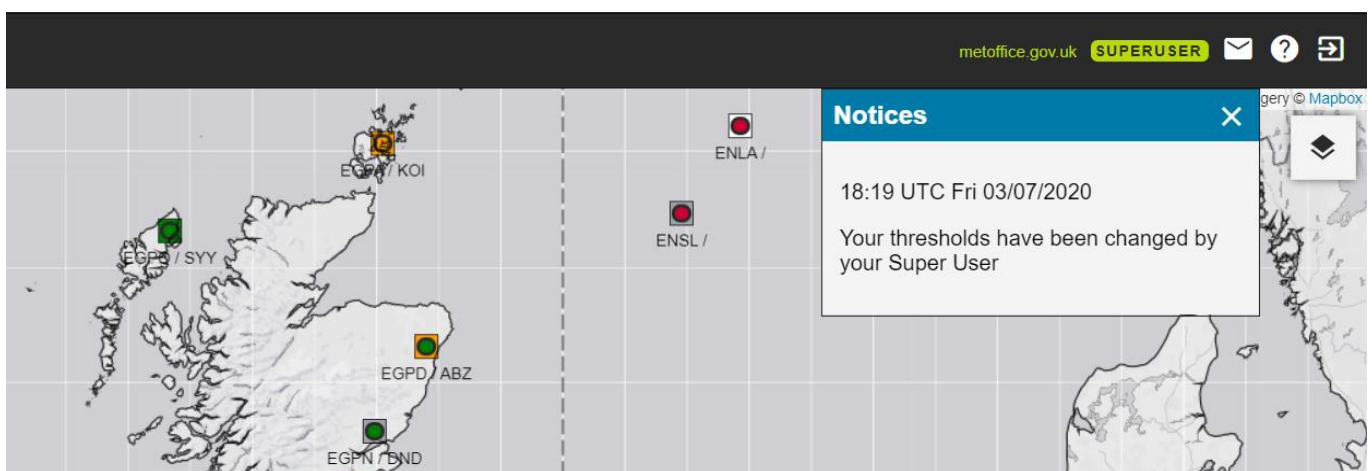
- Click on the airport map icon to view reports and add to the Watch List, or Clear
- Weather Layer Picker to view UK, European and Global observations
- Watch List to monitor reports. Will only save for each login session



- In the top right hand corner of the screen the user domain and role is displayed.



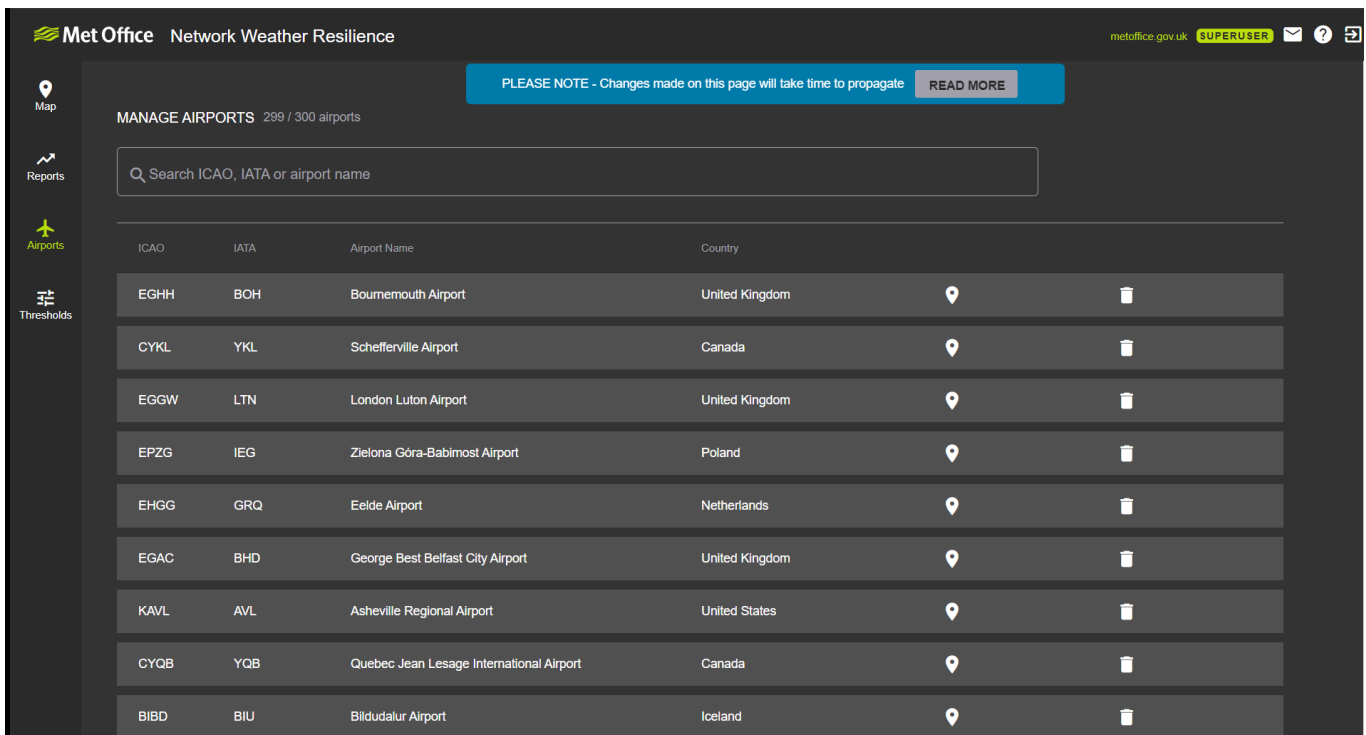
- Notices are available to let the user know when their Superuser last changed the thresholds



Superuser functionality

Manage Airports page

The Airports page allows you to build a list of airports which are important for network operations, which will be imported onto the NWR map for monitoring.



Met Office Network Weather Resilience metoffice.gov.uk SUPERUSER

PLEASE NOTE - Changes made on this page will take time to propagate READ MORE

MANAGE AIRPORTS 299 / 300 airports

Search ICAO, IATA or airport name

ICAO	IATA	Airport Name	Country		
EGHH	BOH	Bournemouth Airport	United Kingdom		
CYKL	YKL	Schefferville Airport	Canada		
EGGW	LTN	London Luton Airport	United Kingdom		
EPZG	IEG	Zielona Góra-Babimost Airport	Poland		
EHGG	GRQ	Eelde Airport	Netherlands		
EGAC	BHD	George Best Belfast City Airport	United Kingdom		
KAVL	AVL	Asheville Regional Airport	United States		
CYQB	YQB	Quebec Jean Lesage International Airport	Canada		
BIBD	BIU	Blidudalur Airport	Iceland		

Please be aware:

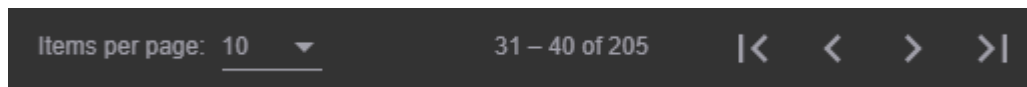
- Only Superusers can view and amend the Manage Airports page, Standard Users will not have access.
- Superuser updates to the airport list will take time to propagate - new airports added to the list will appear on the map when the latest TAF/METAR/SPECI has been published. Deleted airports will display No Data, before disappearing after approximately 36 hours. This is explained using the READ MORE button at the top of the screen.
- The Manage Airports Page is not available on mobile devices – Superuser changes must be undertaken on a desktop device.

Sorting the Airport List

- Sort the list by ascending and descending alphabetical order by clicking directly onto the ICAO, IATA, Airport Name, Country column headings. An arrow will appear to show sorting order:

Country ↑	Country ↓
Argentina	Viet Nam
Australia	Venezuela, Bolivarian Republic of
Australia	United States

- Find Airport List Navigation in the bottom right hand side of the screen:

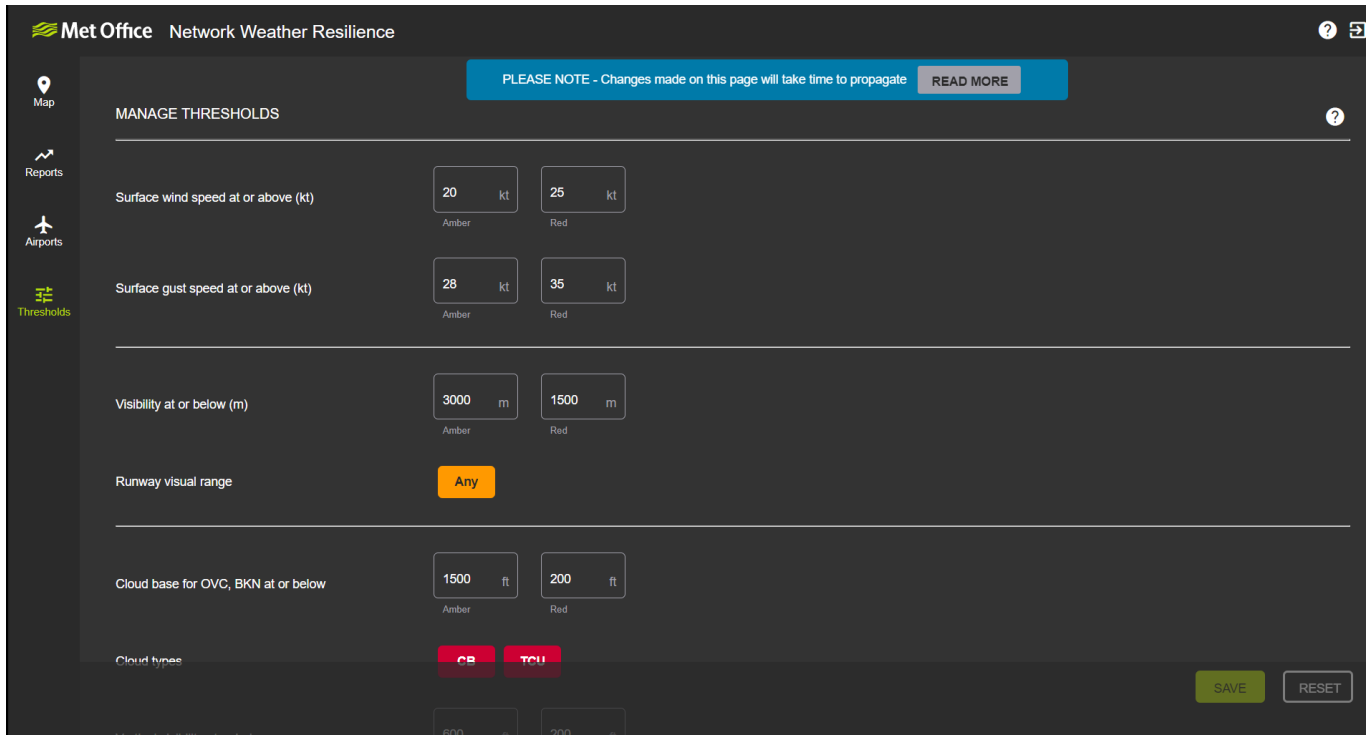


- Note that there is a limit of 300 airports

MANAGE AIRPORTS 299 / 300 airports

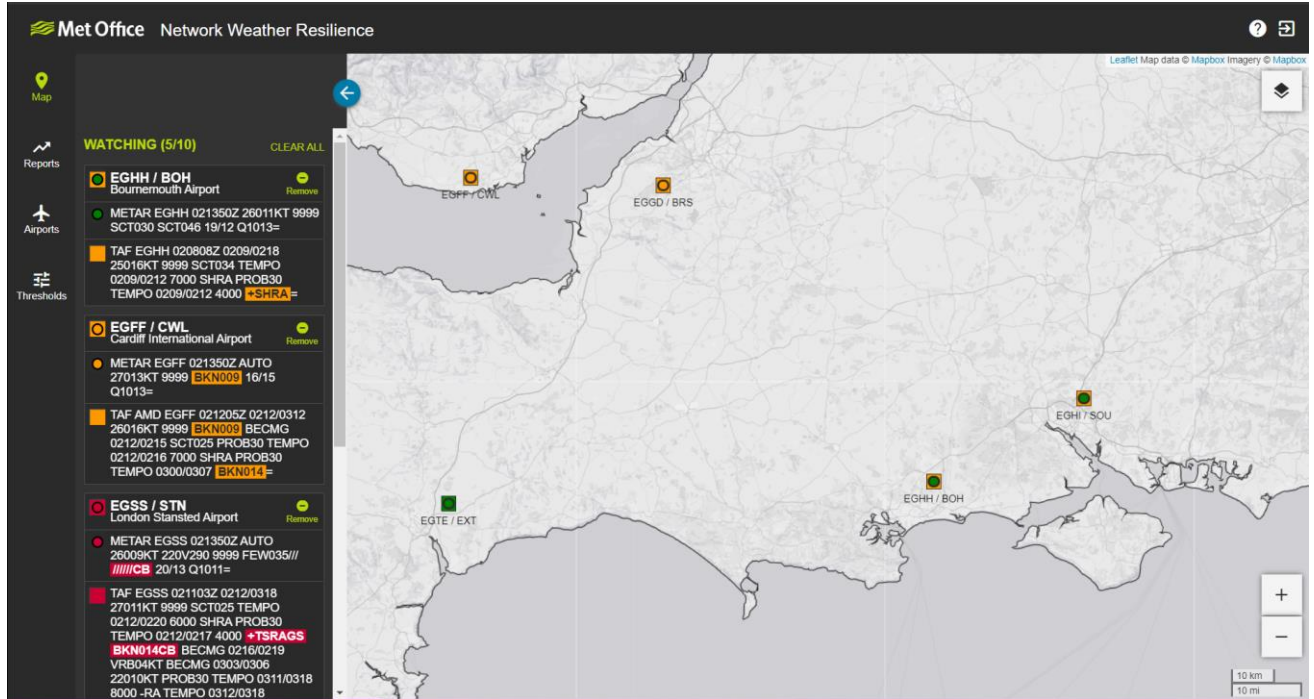
Manage Thresholds page

The Manage Thresholds page allows Superusers to update default settings so that Red Amber Green Status (“RAG” Status) are consistent with operational network decision making.



Please be aware:

- Standard users can read the Threshold Page but will not be able to make modifications. Only the Superuser can modify the Threshold Page on behalf of the organisation.
- On the map, squares indicate the status of a TAF.
- On the map, circles indicate the status of a METAR.
- RED and AMBER highlighting is applied to TAF and METAR reports in the watch list panel.



Highlighting colour coding:

RED	Severe
AMBER	Moderate
GREEN	All clear, no highlighting applied
GREY	Expired or NIL report
WHITE	No Data Available

Setting thresholds

Set Thresholds by either inputting weather limit values or clicking coloured buttons to scroll through GREEN – AMBER – RED:

Surface wind speed at or above (kt)

kt
Amber

kt
Red

Surface gust speed at or above (kt)

kt
Amber

kt
Red



Standard User functionality

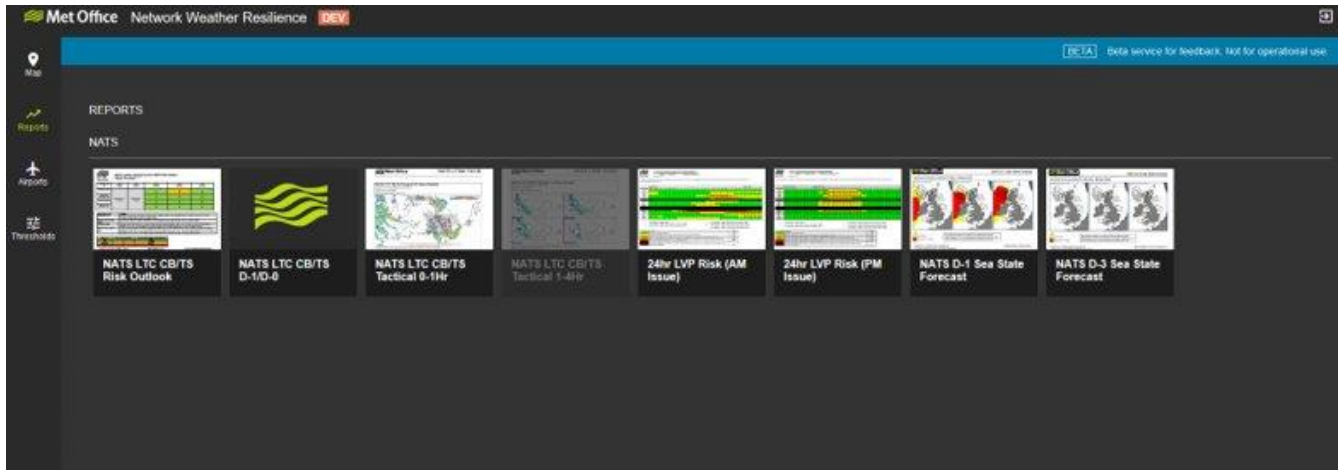
- Standard users will not have access to the Airports Page.
- Standard users will be able to read the Thresholds page but will not be able to modify settings. They will contact the Superuser to request modifications.

Reports Page

All users can access the reports page. Clicking on the relevant product will open a new tab where a pdf of the report can be viewed.

The reports available are described below.

Name	Description	Frequency
EUMETNET Cross Border Advisory D1	https://www.eumetnet.eu/collaborative-forecasting-for-aviation-in-europe/ Useful for understanding the potential for ATM disruption due to convection in the wider European area.	Daily during the Summer months
NATS LTC CB/TS Risk Outlook	London Terminal Control Cumulonimbus (CB) and Thunderstorm (TS) Risk Outlook Forecast (covers D-2 to D-5). Useful to understand the potential for disruption in the TC/TMA area due to convective weather over the coming days.	Daily all year round
NATS LTC CB/TS Tactical 0-1 Hr	London Terminal Control Cumulonimbus and Thunderstorm Short Range 1 hour ahead nowcast. Useful for understanding the very short-term evolution of convective clouds and their impact on the TC/TMA airspace.	Ad hoc as required (weather dependent).
NATS LTC CB/TS Tactical 1-4 Hr	London Terminal Control Cumulonimbus and Thunderstorm Short Range 1-4 hour ahead nowcast. Useful for understanding the short-term evolution of convective clouds and their impact on the TC/TMA airspace.	Ad hoc as required (weather dependent).
24hr LVP Risk (AM Issue)	Shows hourly breakdown of LVP/low cloud risk for a selection of UK airports.	Every 24hrs, morning issue.
24hr LVP Risk (PM Issue)	Shows hourly breakdown of LVP/low cloud risk for a selection of UK airports.	Every 24hrs, afternoon issue.
Volcanic Ash Advisories	This links out to a separate Volcanic Ash website which provides access to a number of products that are	See website.



General Information

Weather Layers

Weather Layer	Update Interval (Minutes)	Data Type
OPERA Weather Radar	15	Observations. Pan-European weather radar.
Visible Satellite	15	Observations
Infra-Red Satellite	15	Observations
Observed Lightning (Spherics)	5	Observations
Visible Thunderstorms	15	Observations: Visible satellite imagery overlaid with European (OPERA) weather radar and lightning observations
Infrared Thunderstorms	15	Observations: Infrared satellite imagery overlaid with European (OPERA) weather radar and lightning observations
Surface Pressure	12 [hours]	Forecast: Global Weather Forecast Model
Jet Stream	12 [hours]	Forecast: Global Weather Forecast Model

The Weather Layer Picker

In the top right corner, select the layer icon to open the Weather Layer Picker. Select a weather layer and switch between UK, Europe and Global domain by toggling between the options.

