



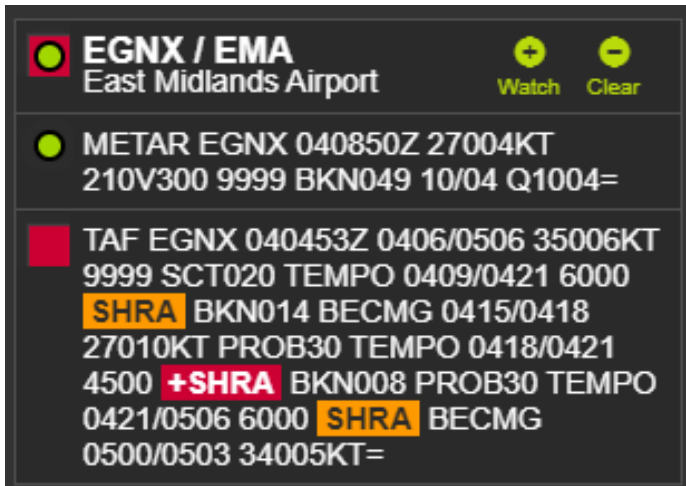
# NWR User Guide

## Contents

|                                   |    |
|-----------------------------------|----|
| Contents.....                     | 2  |
| Getting started.....              | 3  |
| Superuser account privileges..... | 3  |
| Standard user account.....        | 4  |
| NWR for mobile.....               | 5  |
| Home screen overview.....         | 6  |
| Superuser functionality.....      | 8  |
| Manage Airports page.....         | 8  |
| Sorting the Airport List.....     | 9  |
| Manage Thresholds page.....       | 10 |
| Highlighting colour coding:.....  | 11 |
| Standard User functionality.....  | 12 |
| Reports Page.....                 | 12 |
| General Information.....          | 14 |
| Weather Layers.....               | 14 |
| The Weather Layer Picker.....     | 14 |



2. Set thresholds to apply a RedAmberGreen status appropriate for their organisation's decision making. The RAG status will apply to the METAR/SPECI/TAF reports and weather variables exceeding threshold limits will be highlighted as Amber or Red accordingly.



**EGNX / EMA**  
East Midlands Airport

Watch Clear

METAR EGNX 040850Z 27004KT  
210V300 9999 BKN049 10/04 Q1004=

TAF EGNX 040453Z 0406/0506 35006KT  
9999 SCT020 TEMPO 0409/0421 6000  
**SHRA** BKN014 BECMG 0415/0418  
27010KT PROB30 TEMPO 0418/0421  
4500 **+SHRA** BKN008 PROB30 TEMPO  
0421/0506 6000 **SHRA** BECMG  
0500/0503 34005KT=

**NOTE: an organisation can allocate up to two Superusers, a primary Superuser and an optional back-up Superuser.**

### Standard user account

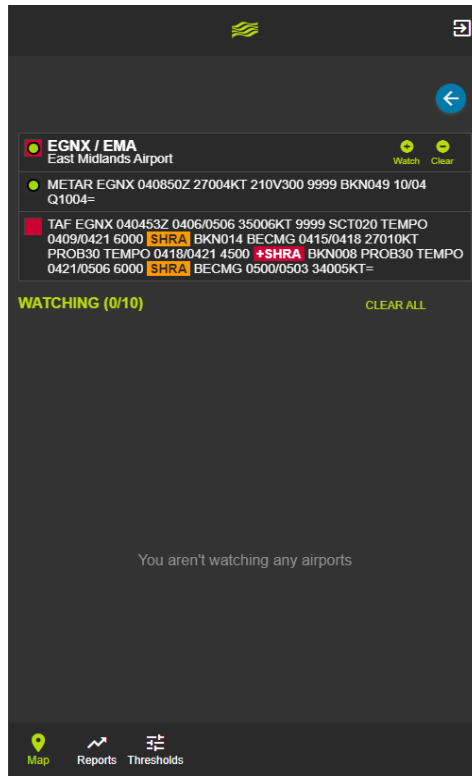
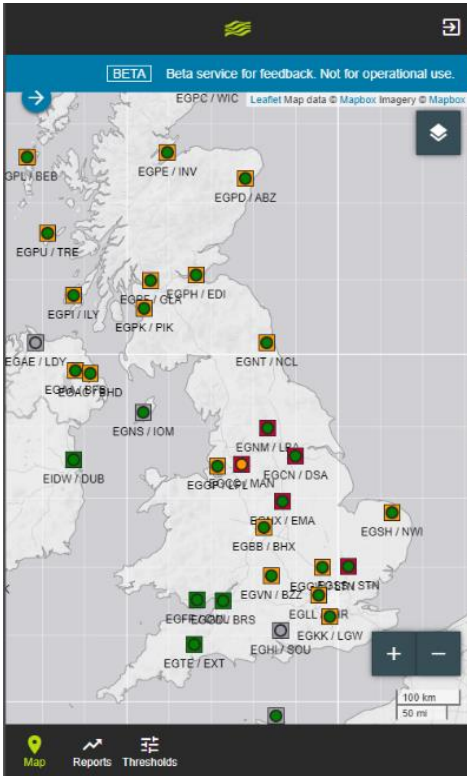
Standard users will not be able to modify the threshold settings using the Manage Thresholds page, but will have access to a read-only version of this page so that they can see what their organisation's threshold settings are.

Standard users will not have access to the Manage Airport List – but can see the airports on the map view.

## NWR for mobile

The mobile and tablet version of NWR does not support the Superuser features above as they are difficult to use on a small device.

All standard user features are available.



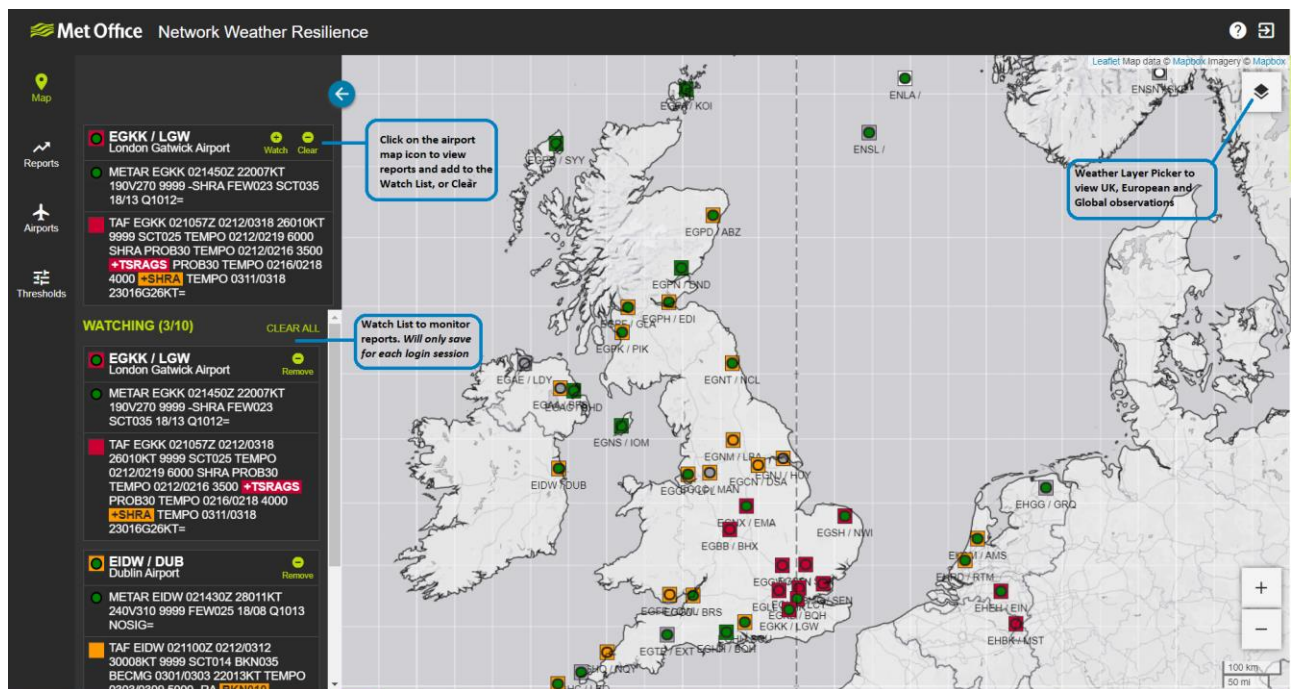
## Home screen overview

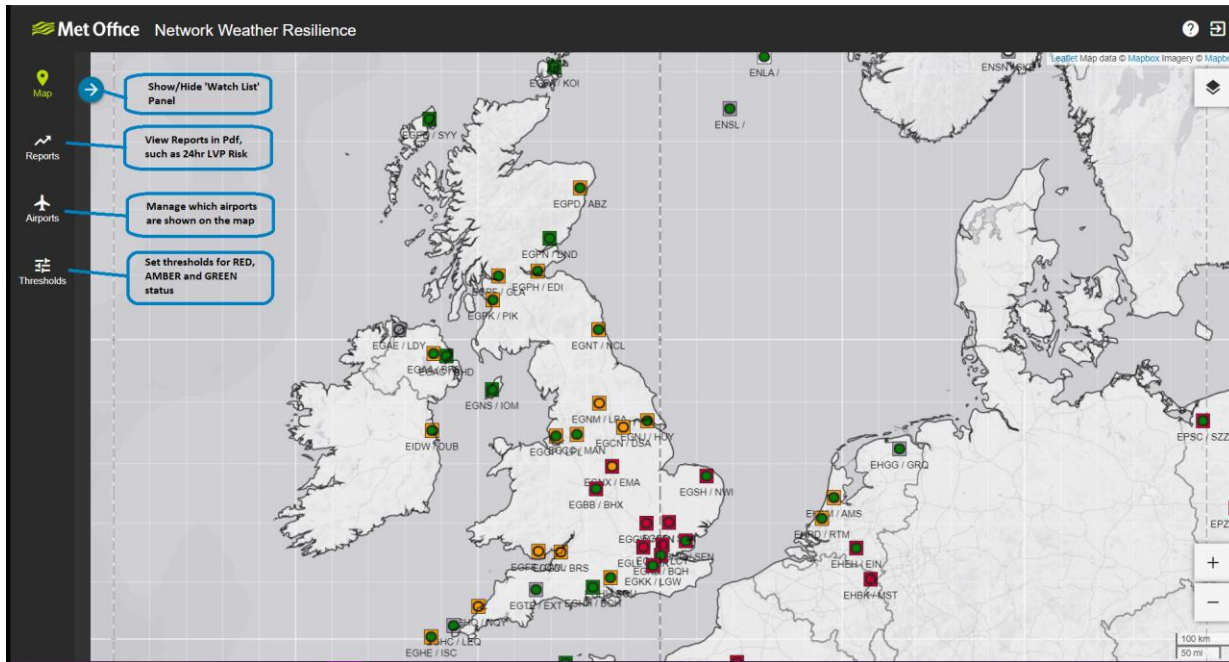
NWR is a web portal which consists of the following:

- An interactive map which allows you pan, zoom and click-to-view airport weather reports (METAR, SPECI, TAF).
- Create a “Watch List” for monitoring weather reports at important locations, to be set up upon login and unique to the user.

**Note: Watch Lists are not stored permanently and will need to be set up for each login session.**

- Apply weather observation layers covering UK, Europe and large parts of the globe.
- The “Watch List” Panel can be hidden for a broader view of the map and weather layers.
- On the left, there are administration pages where a Superuser can set which airports to view on the map and threshold settings for Red Amber Green highlighting (indicating weather risks).

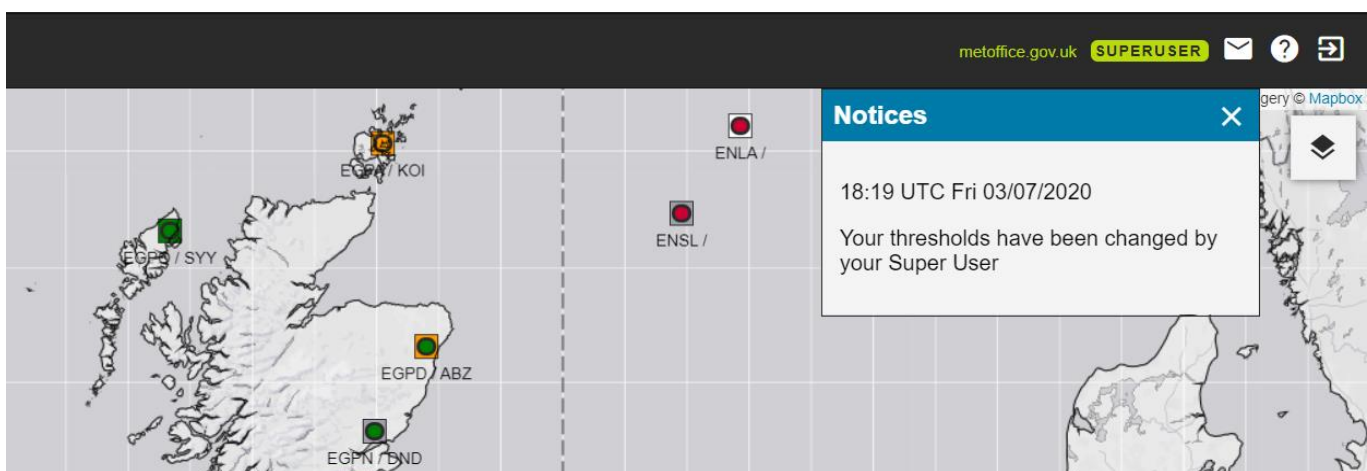




- In the top right hand corner of the screen the user domain and role is displayed.



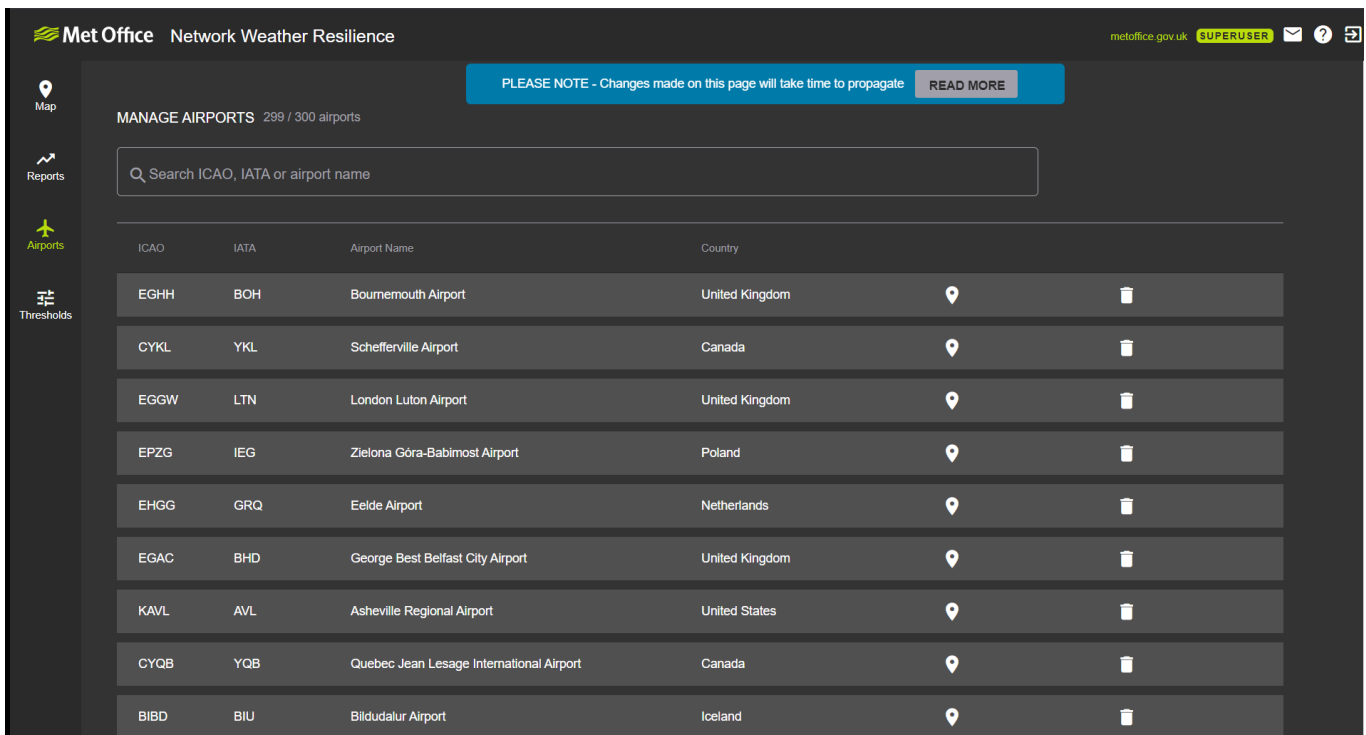
- Notices are available to let the user know when their Superuser last changed the thresholds



## Superuser functionality

### Manage Airports page

The Airports page allows you to build a list of airports which are important for network operations, which will be imported onto the NWR map for monitoring.



Met Office Network Weather Resilience metoffice.gov.uk SUPERUSER

PLEASE NOTE - Changes made on this page will take time to propagate READ MORE

MANAGE AIRPORTS 299 / 300 airports

Search ICAO, IATA or airport name

| ICAO | IATA | Airport Name                             | Country        |  |  |
|------|------|--|----------------|--|--|
| EGHH | BOH  | Bournemouth Airport                      | United Kingdom |  |  |
| CYKL | YKL  | Schefferville Airport                    | Canada         |  |  |
| EGGW | LTN  | London Luton Airport                     | United Kingdom |  |  |
| EPZG | IEG  | Zielona Góra-Babimost Airport            | Poland         |  |  |
| EHGG | GRQ  | Eelde Airport                            | Netherlands    |  |  |
| EGAC | BHD  | George Best Belfast City Airport         | United Kingdom |  |  |
| KAVL | AVL  | Asheville Regional Airport               | United States  |  |  |
| CYQB | YQB  | Quebec Jean Lesage International Airport | Canada         |  |  |
| BIBD | BIU  | Blidudalur Airport                       | Iceland        |  |  |

#### Please be aware:

- Only Superusers can view and amend the Manage Airports page, Standard Users will not have access.
- Super User updates to the airport list will take time to propagate - new airports added to the list will appear on the map when the latest TAF/METAR/SPECI has been published. Deleted airports will display No Data, before disappearing after approximately 36 hours. This is explained using the READ MORE button at the top of the screen.
- The Manage Airports Page is not available on mobile devices – Superuser changes must be undertaken on a desktop device.

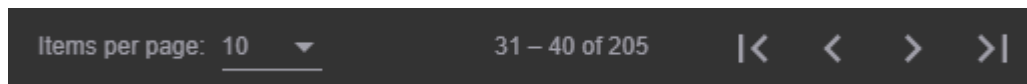


### Sorting the Airport List

- Sort the list by ascending and descending alphabetical order by clicking directly onto the ICAO, IATA, Airport Name, Country column headings. An arrow will appear to show sorting order:

| Country ↑ | Country ↓                         |
|-----------|-----------------------------------|
| Argentina | Viet Nam                          |
| Australia | Venezuela, Bolivarian Republic of |
| Australia | United States                     |

- Find Airport List Navigation in the bottom right hand side of the screen:

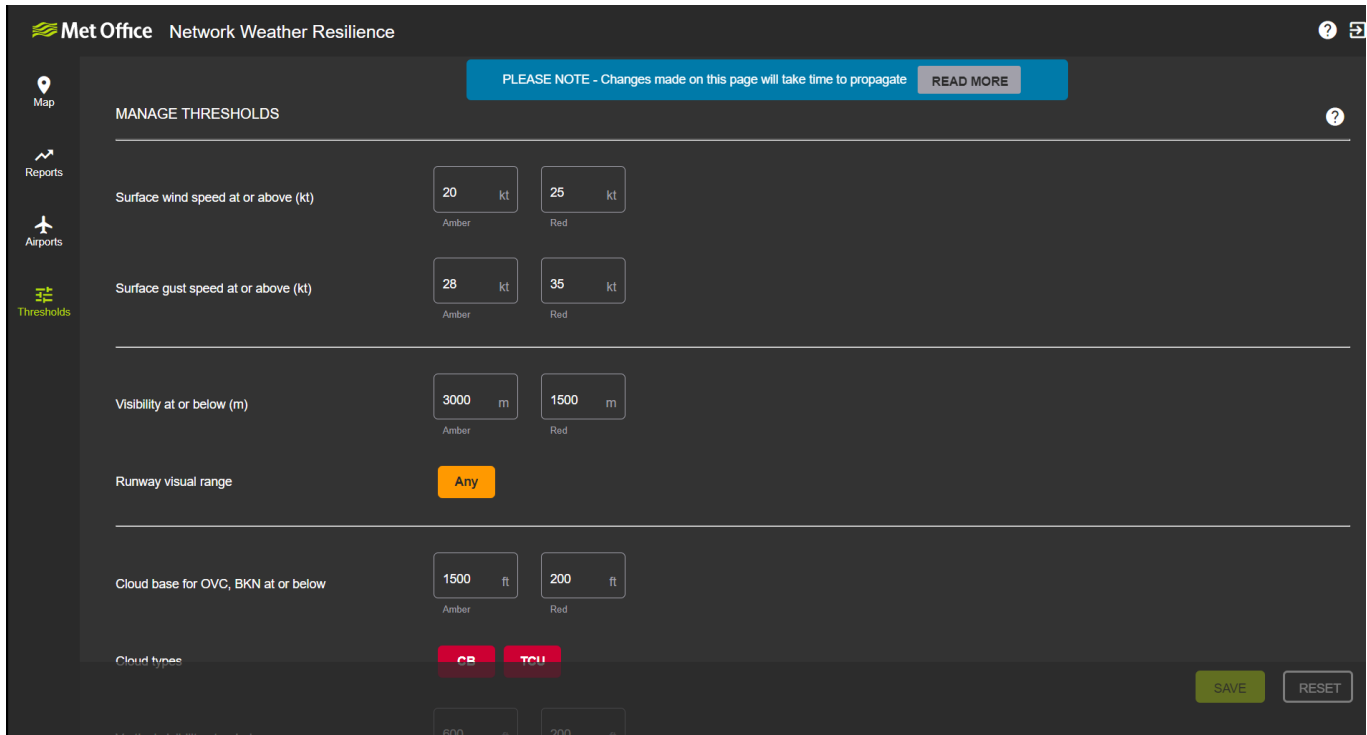


- Note that there is a limit of 300 airports

**MANAGE AIRPORTS** 299 / 300 airports

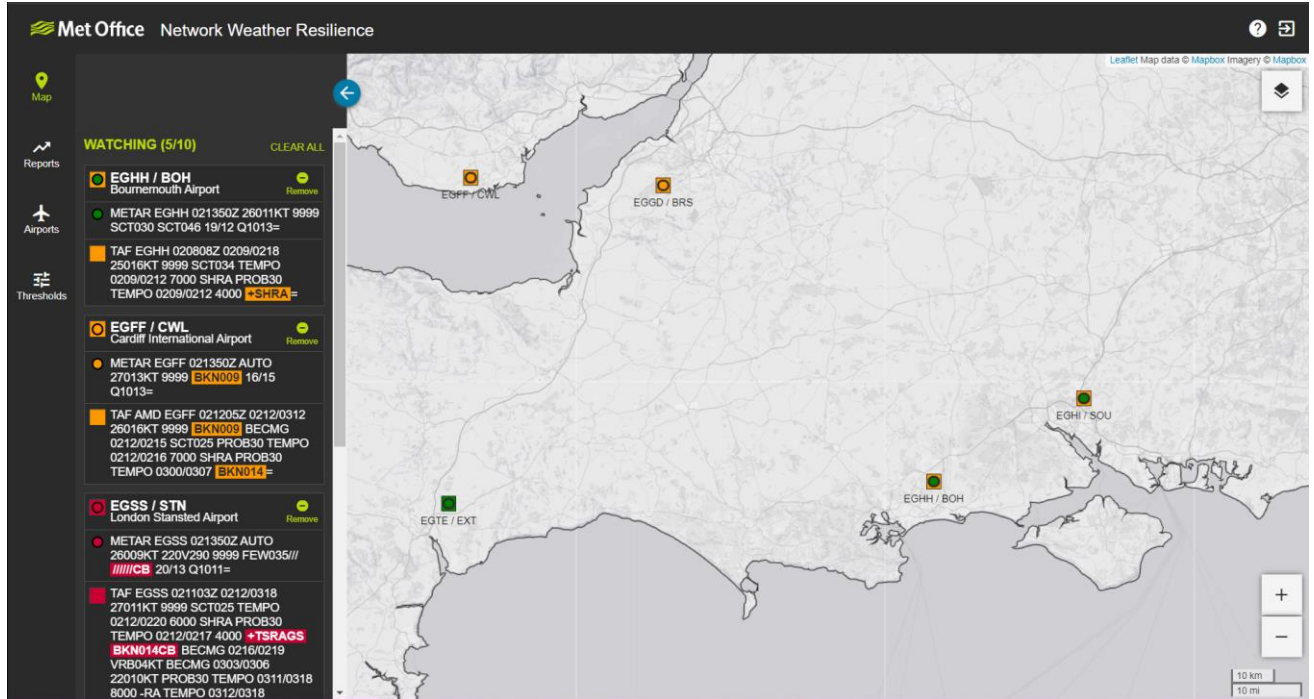
## Manage Thresholds page

The Manage Thresholds page allows Superusers to update default settings so that Red Amber Green Status (“RAG” Status) are consistent with operational network decision making.



### Please be aware:

- Standard users can read the Threshold Page but will not be able to make modifications. Only the Superuser can modify the Threshold Page on behalf of the organisation.
- On the map, squares indicate the status of a TAF.
- On the map, circles indicate the status of a METAR.
- RED and AMBER highlighting is applied to TAF and METAR reports in the watch list panel.



Highlighting colour coding:

|              |   |
|--------------|---|
| <b>RED</b>   | <b>Severe</b>                             |
| <b>AMBER</b> | <b>Moderate</b>                           |
| <b>GREEN</b> | <b>All clear, no highlighting applied</b> |
| <b>GREY</b>  | <b>Expired or NIL report</b>              |
| <b>WHITE</b> | <b>No Data Available</b>                  |

Setting thresholds

Set Thresholds by either inputting weather limit values or clicking coloured buttons to scroll through GREEN – AMBER – RED:

Surface wind speed at or above (kt)      10 kt (Amber)      35 kt (Red)

Surface gust speed at or above (kt)      20 kt (Amber)      45 kt (Red)



## Standard User functionality

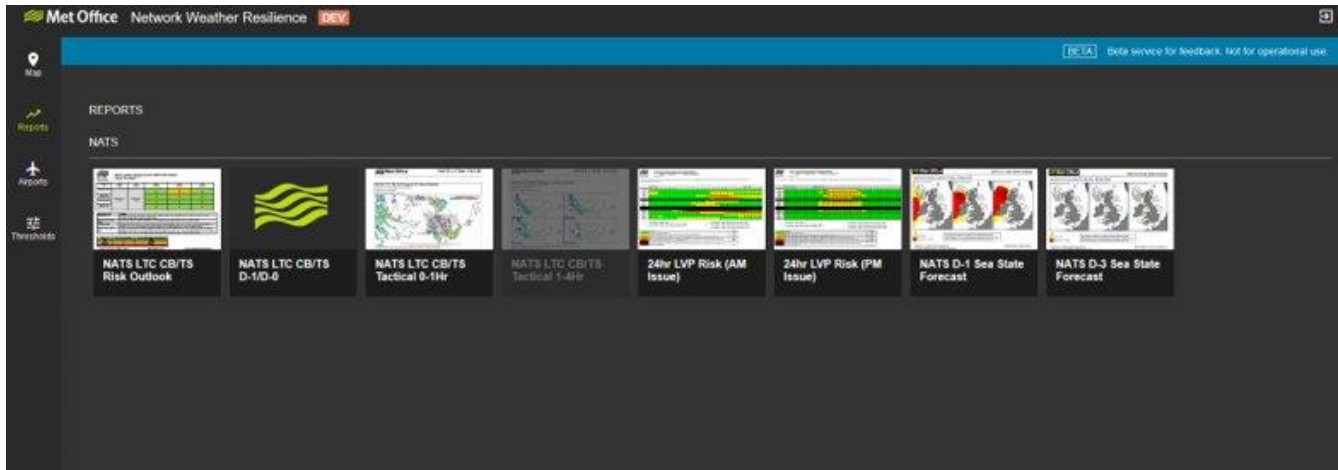
- Standard users will not have access to the Airports Page.
- Standard users will be able to read the Thresholds page but will not be able to modify settings. They will contact the Superuser to request modifications.

## Reports Page

All users can access the reports page. Clicking on the relevant product will open a new tab where a pdf of the report can be viewed.

The reports available are described below.

| Name                              | Description  | Frequency                               |
|-----------------------------------|--|---|
| EUMETNET Cross Border Advisory D1 | <a href="https://www.eumetnet.eu/collaborative-forecasting-for-aviation-in-europe/">https://www.eumetnet.eu/collaborative-forecasting-for-aviation-in-europe/</a><br>Useful for understanding the potential for ATM disruption due to convection in the wider European area. | Daily during the Summer months          |
| NATS LTC CB/TS Risk Outlook       | London Terminal Control Cumulonimbus (CB) and Thunderstorm (TS) Risk Outlook Forecast (covers D-2 to D-5). Useful to understand the potential for disruption in the TC/TMA area due to convective weather over the coming days.  | Daily all year round                    |
| NATS LTC CB/TS Tactical 0-1 Hr    | London Terminal Control Cumulonimbus and Thunderstorm Short Range 1 hour ahead nowcast. Useful for understanding the very short-term evolution of convective clouds and their impact on the TC/TMA airspace.   | Ad hoc as required (weather dependent). |
| NATS LTC CB/TS Tactical 1-4 Hr    | London Terminal Control Cumulonimbus and Thunderstorm Short Range 1-4 hour ahead nowcast. Useful for understanding the short-term evolution of convective clouds and their impact on the TC/TMA airspace.  | Ad hoc as required (weather dependent). |
| 24hr LVP Risk (AM Issue)          | Shows hourly breakdown of LVP/low cloud risk for a selection of UK airports.   | Every 24hrs, morning issue.             |
| 24hr LVP Risk (PM Issue)          | Shows hourly breakdown of LVP/low cloud risk for a selection of UK airports.   | Every 24hrs, afternoon issue.           |
| Volcanic Ash Advisories           | This links out to a separate Volcanic Ash website which provides access to a number of products that are available.  | See website.                            |



## General Information

### Weather Layers

| Weather Layer                        | Update Interval (Minutes) | Data Type  |
|--------------------------------------|---------------------------|--|
| <b>OPERA Weather Radar</b>           | 15                        | Observations. Pan-European weather radar.  |
| <b>Visible Satellite</b>             | 15                        | Observations   |
| <b>Infra-Red Satellite</b>           | 15                        | Observations   |
| <b>Observed Lightning (Spherics)</b> | 5                         | Observations   |
| <b>Visible Thunderstorms</b>         | 15                        | Observations: Visible satellite imagery overlaid with European (OPERA) weather radar and lightning observations  |
| <b>Infrared Thunderstorms</b>        | 15                        | Observations: Infrared satellite imagery overlaid with European (OPERA) weather radar and lightning observations |
| <b>Surface Pressure</b>              | 12 [hours]                | Forecast: Global Weather Forecast Model  |
| <b>Jet Stream</b>                    | 12 [hours]                | Forecast: Global Weather Forecast Model  |

### The Weather Layer Picker

In the top right corner, select the layer icon to open the Weather Layer Picker. Select a weather layer and switch between UK, Europe and Global domain by toggling between the options.

