



Creating your own weather forecast

- 1** If your group is new to weather reporting, explain that a weather forecast is a statement saying what the weather will be like the next day or for the next few days. Tell the group that they will imagine they are working for a local radio or TV and will have a go at making a weather forecast of their own which they will present to the group if they have time
- 2** They can either do this using their forecast cards (on pages 3 – 5) or the Met Office website to find the forecast for the rest of the day. To help the group, you can show a few examples of weather forecast, such as **the latest weather forecast** from the Met Office, or a weather forecast in a newspaper
- 3** Ask them to think about what is normally included in a weather forecast using the checklist below:
 - What are the highest and lowest temperatures?
 - What are the chances of precipitations (chances of rain)?
 - What is the wind speed?
 - What do people need to know about the weather?



25 – 30 minutes



Groupwork

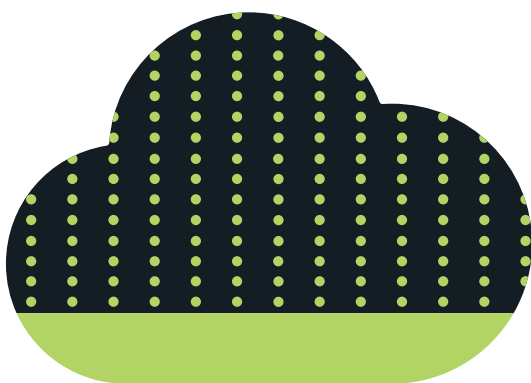


Forecast cards

4 Encourage them to think about the language and tone used in weather forecast:

- What kind of words are used in a weather forecast?
- How is the information presented?
- How are people warned about the potential risks?

5 Give the group 10 minutes to write their weather forecast and ask for a few volunteers to come to the front of the class and present their weather report. Ask the rest of the group for feedback: was all the key information included? Was the information factually true?



Forecast cards

Location: Edinburgh

Heavy rain and strong winds

Highest daily temperature:
12 °C

Lowest daily temperature:
9 °C

Chance of precipitation: 95%

Average wind speed: 29 mph

Gust speed: 61 mph

Location: Cardiff

Snow showers and risk of ice
overnight

Highest daily temperature:
2 °C

Lowest daily temperature:
-8 °C

Chance of precipitation:
40%

Average wind speed: 6 mph

Gust speed: 12 mph

Location: London

Sunny and very warm

Highest daily temperature:
36 °C

Lowest daily temperature:
23 °C

Chance of precipitation: 10%

Average wind speed: 4 mph

Gust speed: 8 mph

Location: Belfast

Heavy rain turning into hail in
the afternoon

Highest daily temperature:
10 °C

Lowest daily temperature:
3 °C

Chance of precipitation:
90%

Average wind speed: 21 mph

Gust speed: 38 mph

Forecast cards

Location: Manchester

Blustery showers

Highest daily temperature:
15 °C

Lowest daily temperature:
9 °C

Chance of precipitation: 70%

Average wind speed: 18 mph

Gust speed: 29 mph

Location: Plymouth

Sunny intervals with gusty
showers in the afternoon

Highest daily temperature:
15 °C

Lowest daily temperature:
10 °C

Chance of precipitation:
60%

Average wind speed: 13 mph

Gust speed: 32 mph

Location: Glasgow

Rain showers turning into
sleet in the afternoon

Highest daily temperature:
5 °C

Lowest daily temperature:
2 °C

Chance of precipitation:
80%

Average wind speed: 9 mph

Gust speed: 18 mph

Location: Norwich

Strong sun, turning cloudy in
the evening

Highest daily temperature:
26 °C

Lowest daily temperature:
18 °C

Chance of precipitation: 20%

Average wind speed: 10 mph

Gust speed: 16 mph